

# Los Angeles County Probation Department

AB 109 Year 2 Report – December 17, 2013

Jerry E. Powers, Chief Probation Officer





# Outline

- Probation Updates
- Departmental Updates
  - ✓ Department of Mental Health
  - ✓ Department of Public Health/SAPC
  - ✓ Los Angeles County Sheriff's Department
- Questions



# PRCS Population End of Year Snapshot

## Year One vs. Year Two

Population	Year One	Year Two	Total
Total Cases Accepted	11,617	6,775	18,392
Total Cases Closed	845	6,534	7,379
Outstanding Warrants <sup>1</sup>	872	1,931	1,931
Deported <sup>2</sup>	672	377	1,049
Active Cases			8,033

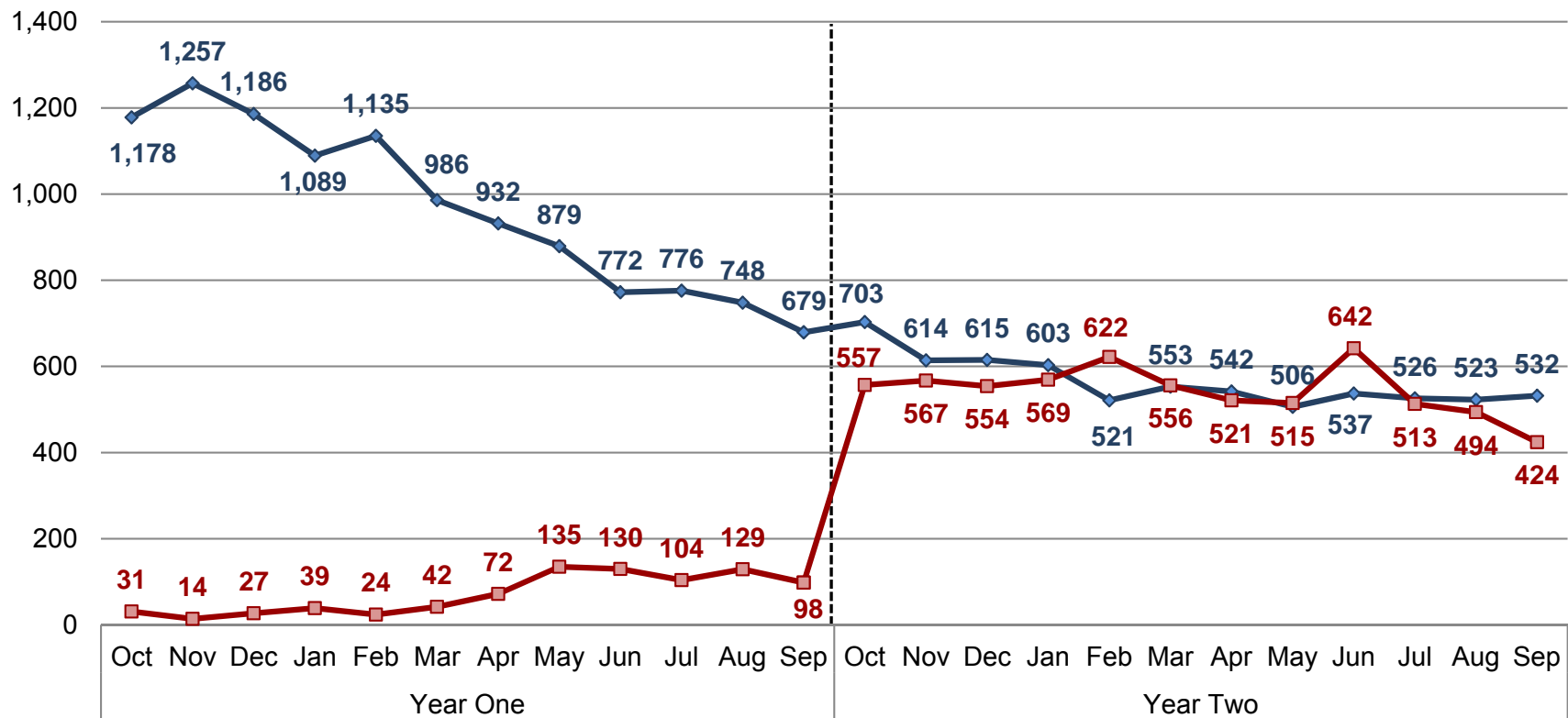
<sup>1</sup> Does not include Warrants issued for deported PSPs. Snapshot of total at year end.

<sup>2</sup> PRCS case accepted; PSP deported



# Cases Accepted vs. Cases Closed

## October 2011 through September 30, 2013

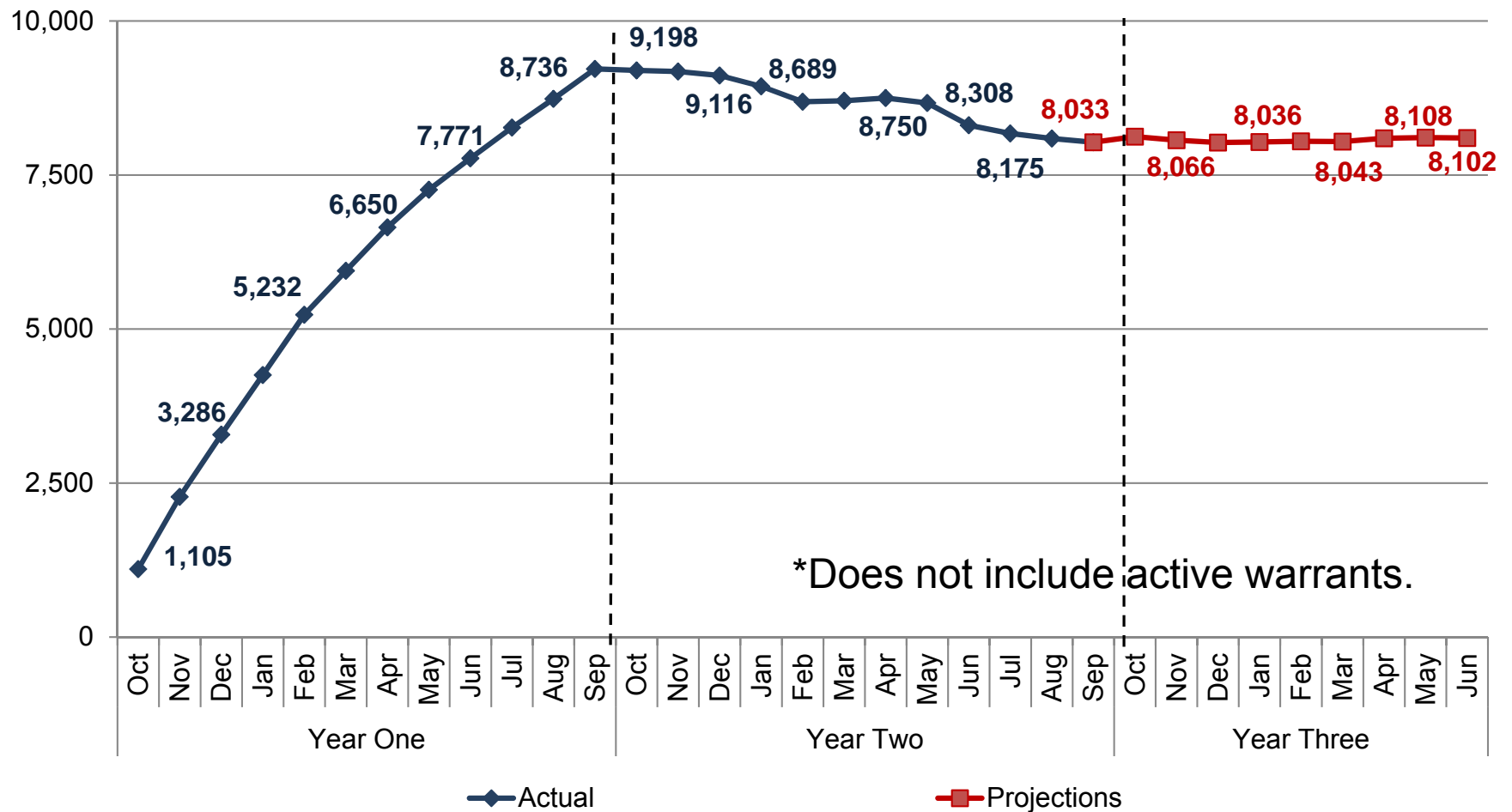


◆ Year One Accepted Total 11,617  
 ■ Year One Closed Total 845

◆ Year Two Accepted Total 6,775  
 ■ Year Two Closed Total 6,534

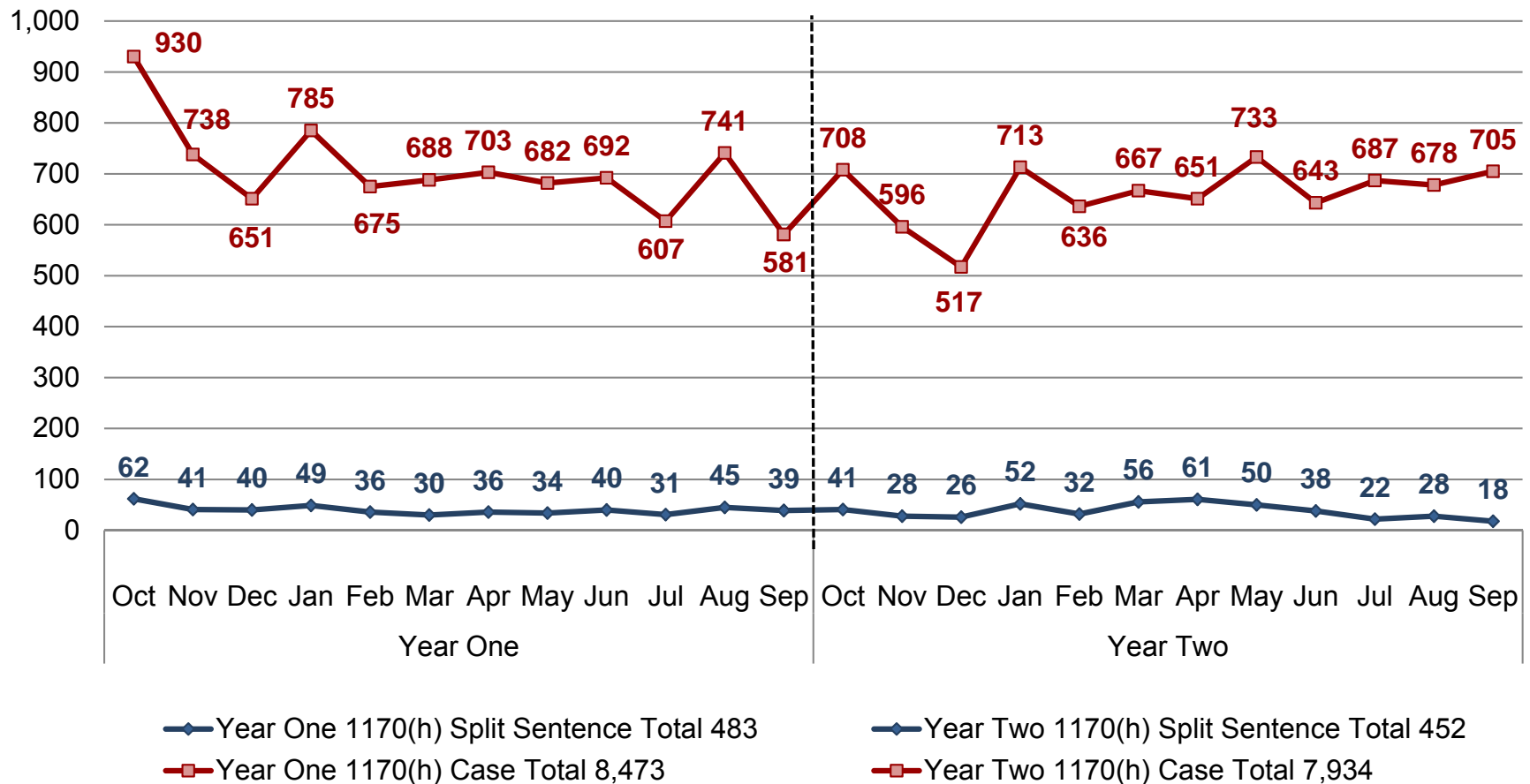


# PRCS Actuals/Projections-Active Cases\* October 2011 through June 30, 2014





# Defendants Sentenced Pursuant to PC1170(h) October 2011 through September 30, 2013

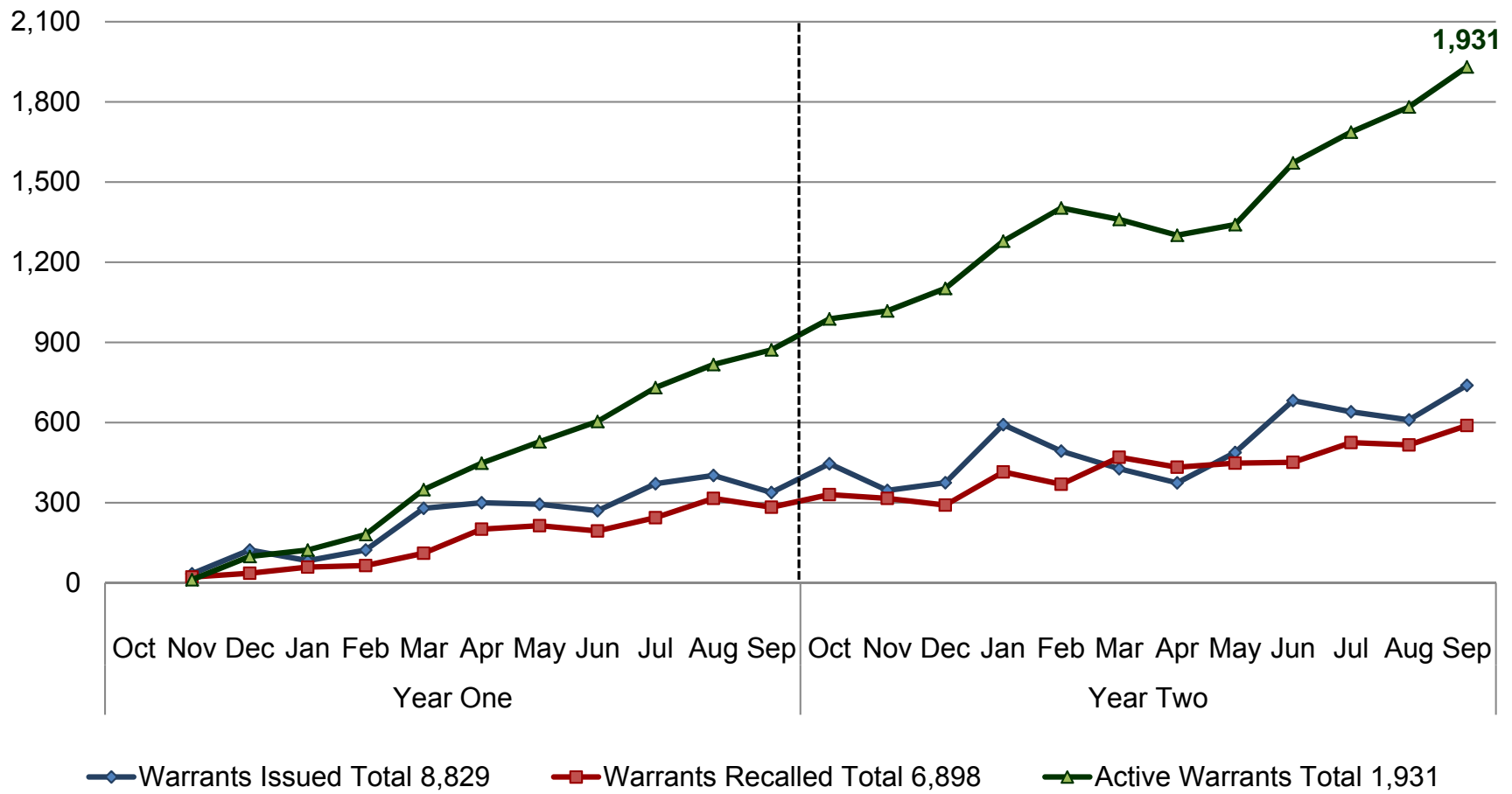


Source: LASD and LA Superior Court



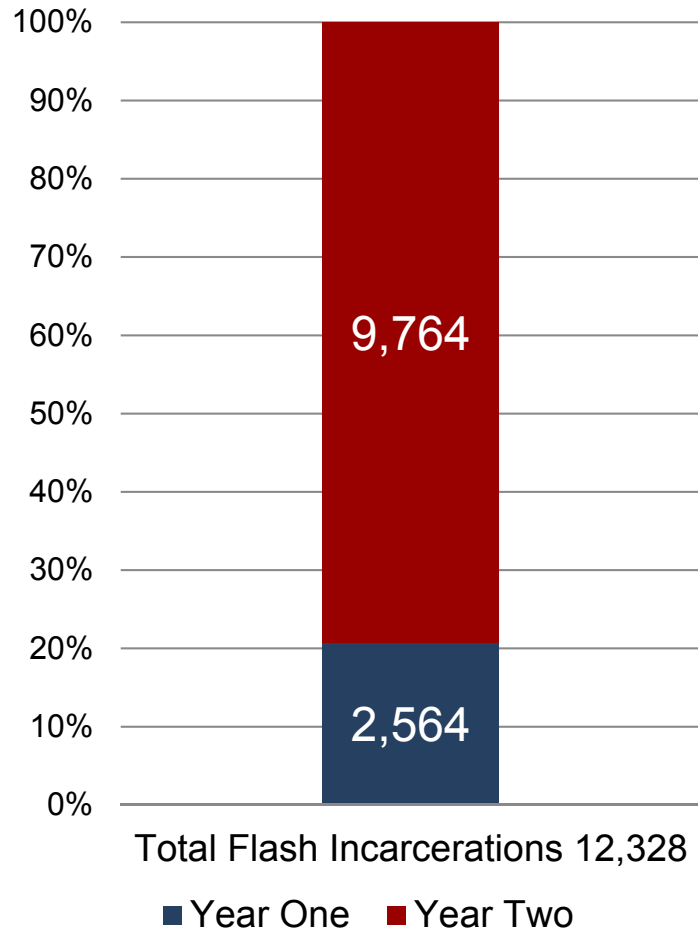
# Warrants

## Excludes Deportations





# Flash Incarcerations



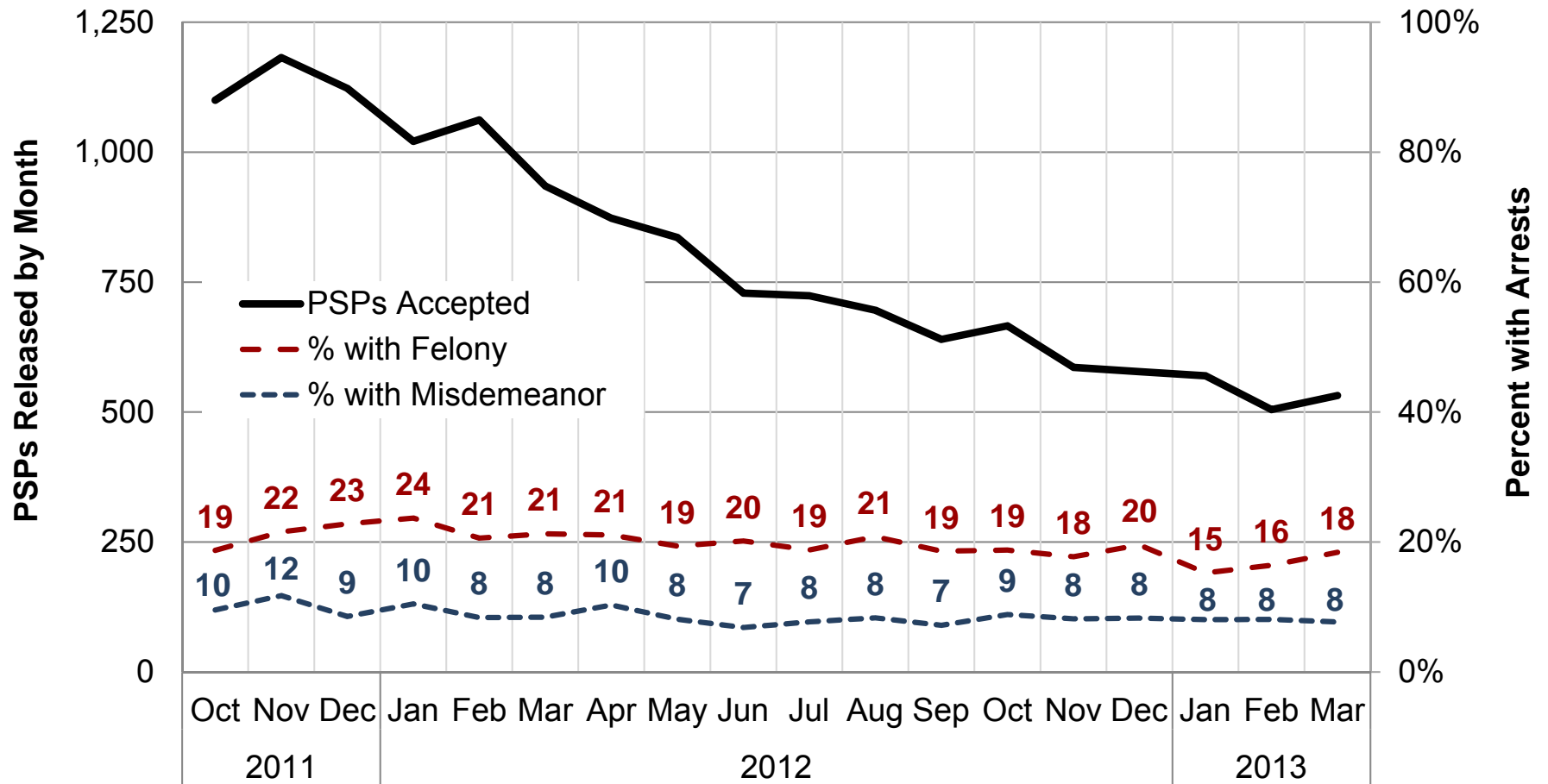
Number of Flashes	Individual PSPs	Percent of PSPs Flashed
1	3,442	52.62%
2	1,629	24.90%
3	784	11.99%
4	378	5.78%
5	170	2.60%
6	89	1.36%
7	27	0.41%
8	16	0.24%
9	3	0.05%
10	0	0.00%
11	1	0.02%
12	1	0.02%
13	1	0.02%
<b>Total</b>	<b>6,541</b>	<b>100.00%</b>





# PSPs Accepted by Month

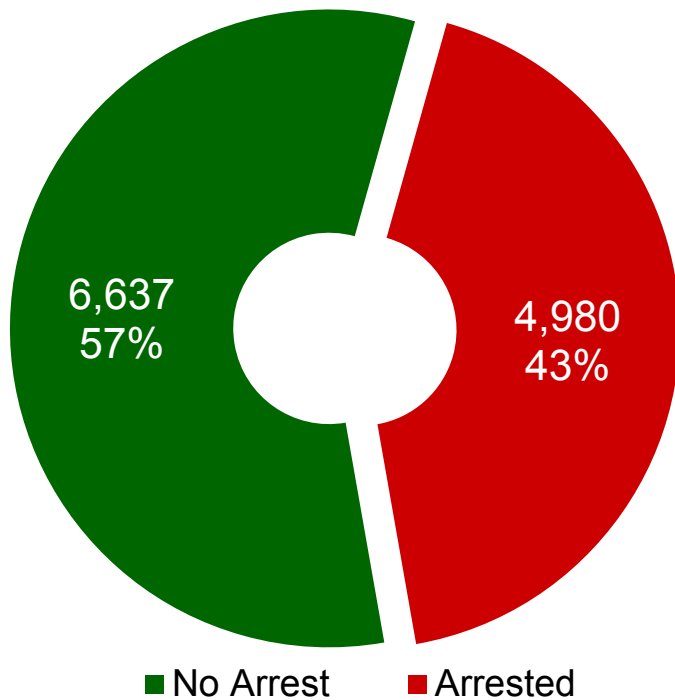
## Percentage Arrested within 180-days of Discharge



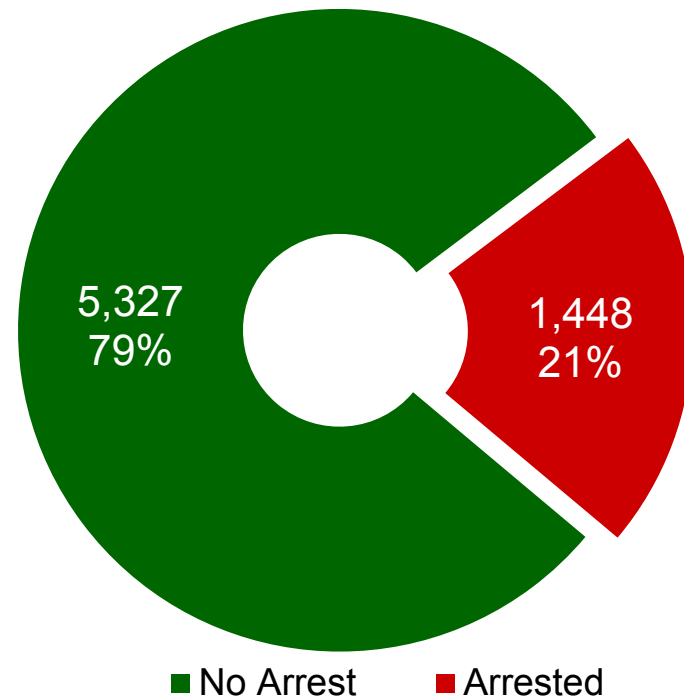


# Arrests

Year One



Year Two

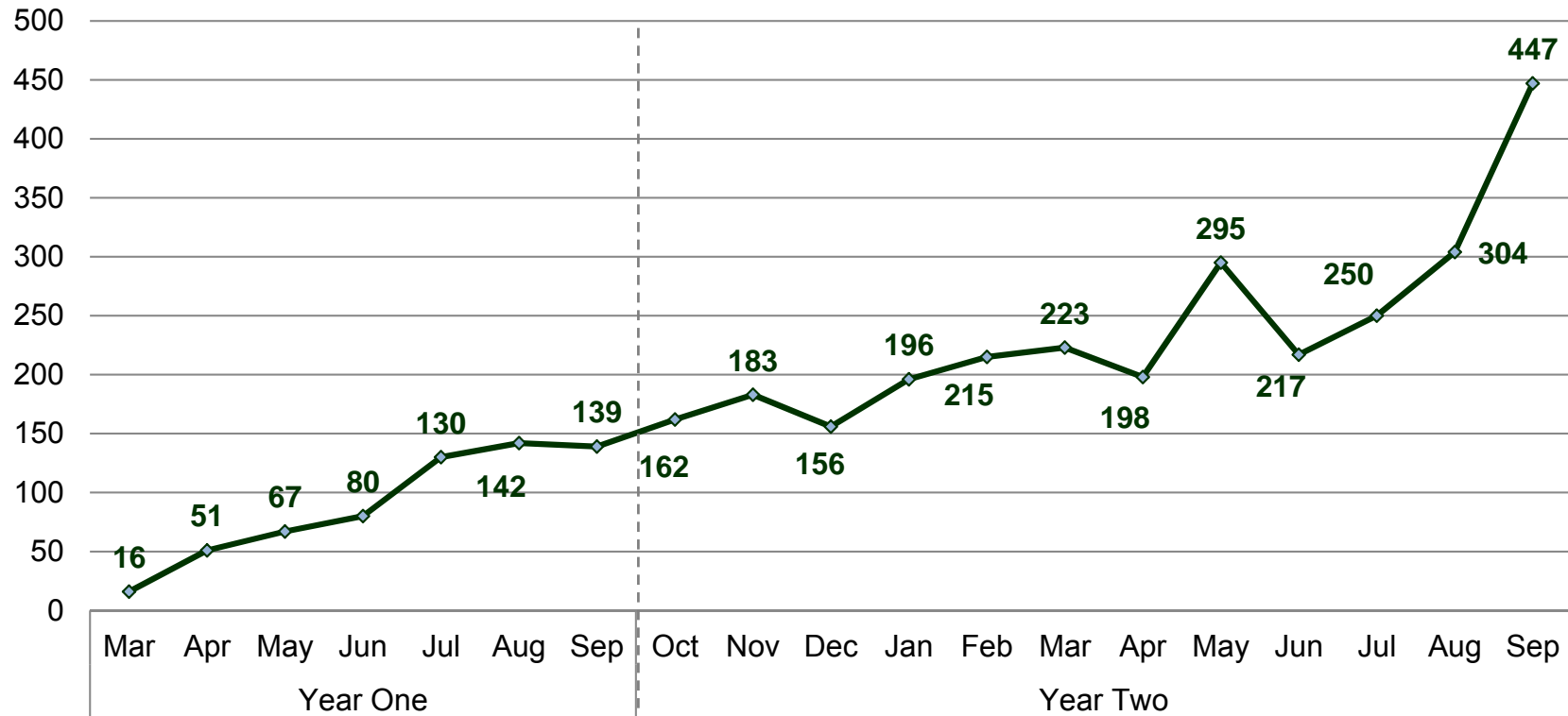


Year One Accepted Cases: 11,617  
Year One Total Arrests: 10,698

Year Two Accepted Cases: 6,775  
Year Two Total Arrests: 2,188



# Revocation Cases by Month



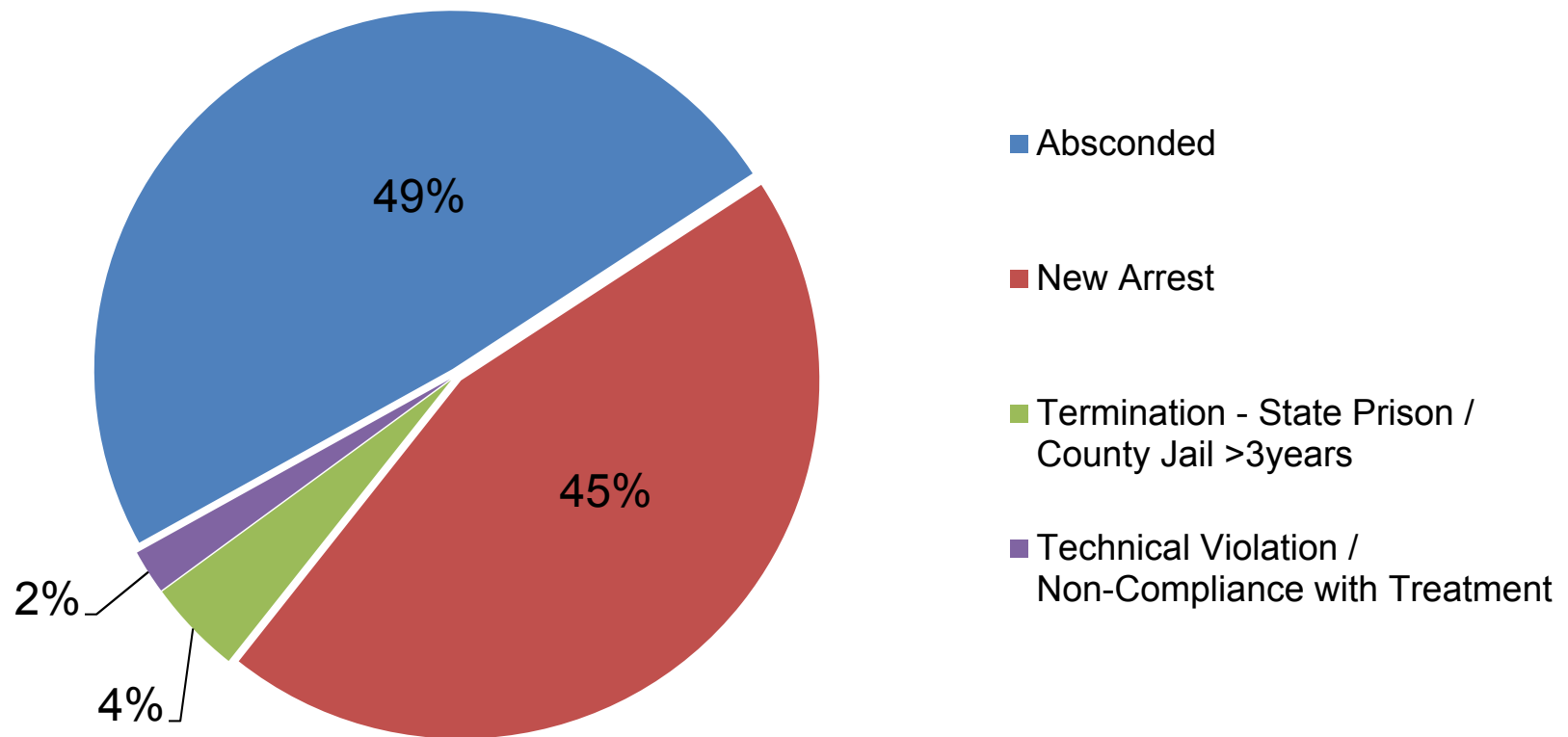
Year One Total Cases: 625  
Year One Total Individuals: 570

Year Two Total Cases: 2,846  
Year Two Total Individuals: 2,327

**Total Revocation Cases 3,471**



# Revocation Reasons\*



\*Percentages based on random sample of 350 (~10%) Revocation Case Requests submitted



# Terminations

	Year One	Year Two	Cumulative Total
<b>Terminations</b>	<b>845</b>	<b>6,534</b>	<b>7,379</b>
Successful Termination	29	4,638	4,667
State Prison / LA Superior Court Case	316	1,276	1,592
Transfer - Outgoing PC 1203.9	111	270	381
Transferred to Parole (DAPO)	256	118	374
County Jail / LA Superior Court Case	58	90	148
State Prison / Non-LA Superior Court Case	40	65	105
Deceased	31	63	94
Appeal Granted – Conviction Overturned	2	5	7
Administrative Error – Not a CDCR Case	0	6	6
County Jail / Non-LA Superior Court Case	2	3	5



# Year Three (3) Priorities/Strategies

- Continuing Hiring Process
- Developing Specialized Caseloads
  - ✓ Very High Risk
  - ✓ Sex Offender
  - ✓ Mental Health
  - ✓ Co-Occurring
  - ✓ Homeless
- Roll-out New Contract for Comprehensive Services
- Occupy New Area Office Facilities
- Assist with Facilitation of Regional Resource Fairs in Collaboration with Community-based Organizations
- Increase Field Contacts



# Staffing

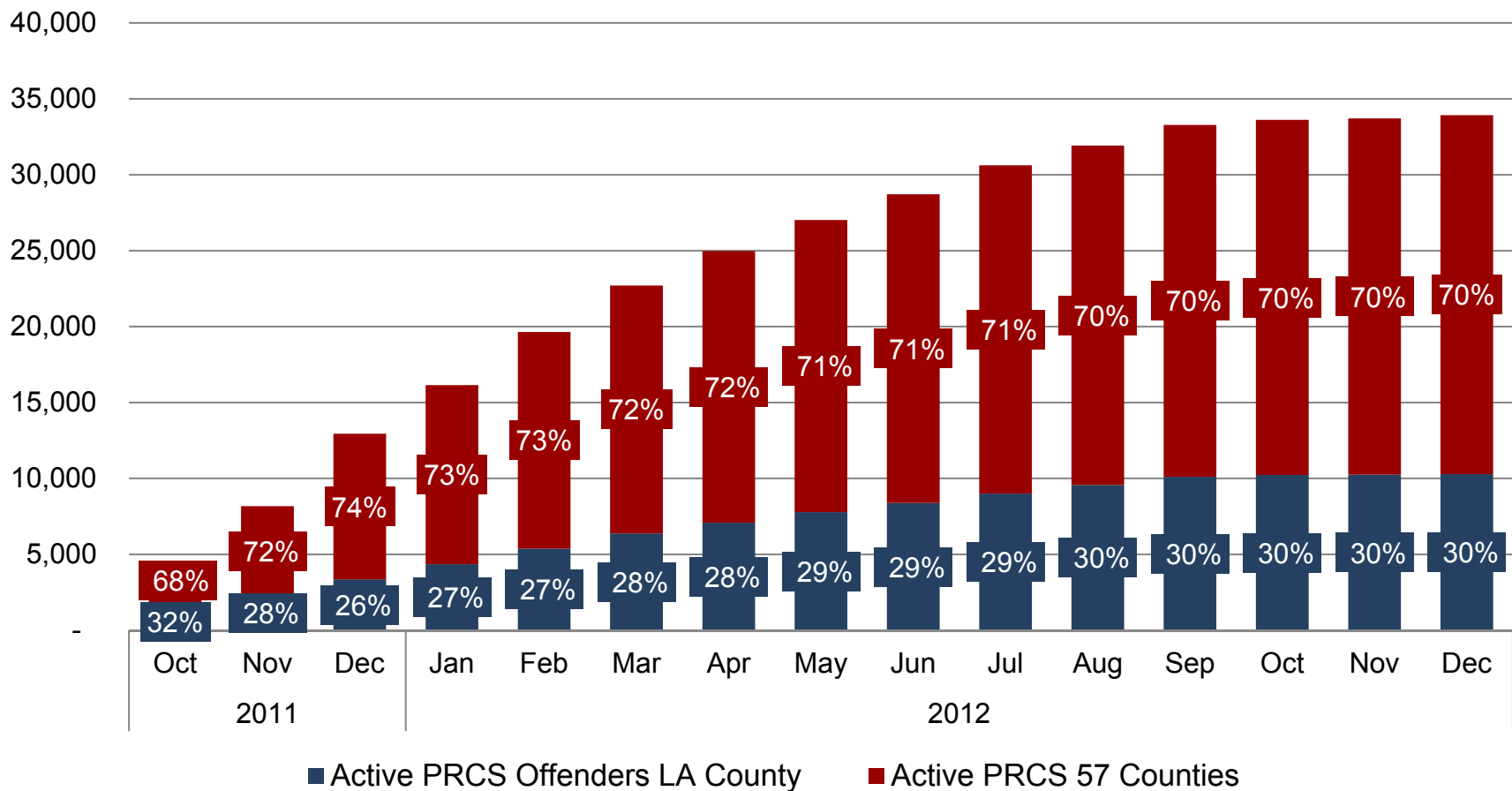
	Year One	Year Two	Total
DPO II Items	363		
Filled	121	112	233
Vacant	242	130	130
Contingent Offers Made			126

# Caseload Ratios

	Year One	Year Two
Total Cases	9,836	8,033
Filled Supervision DPOs	75	112
Caseload Ratio	131:1	72:1



# Active PSP Population Statewide vs. Los Angeles County

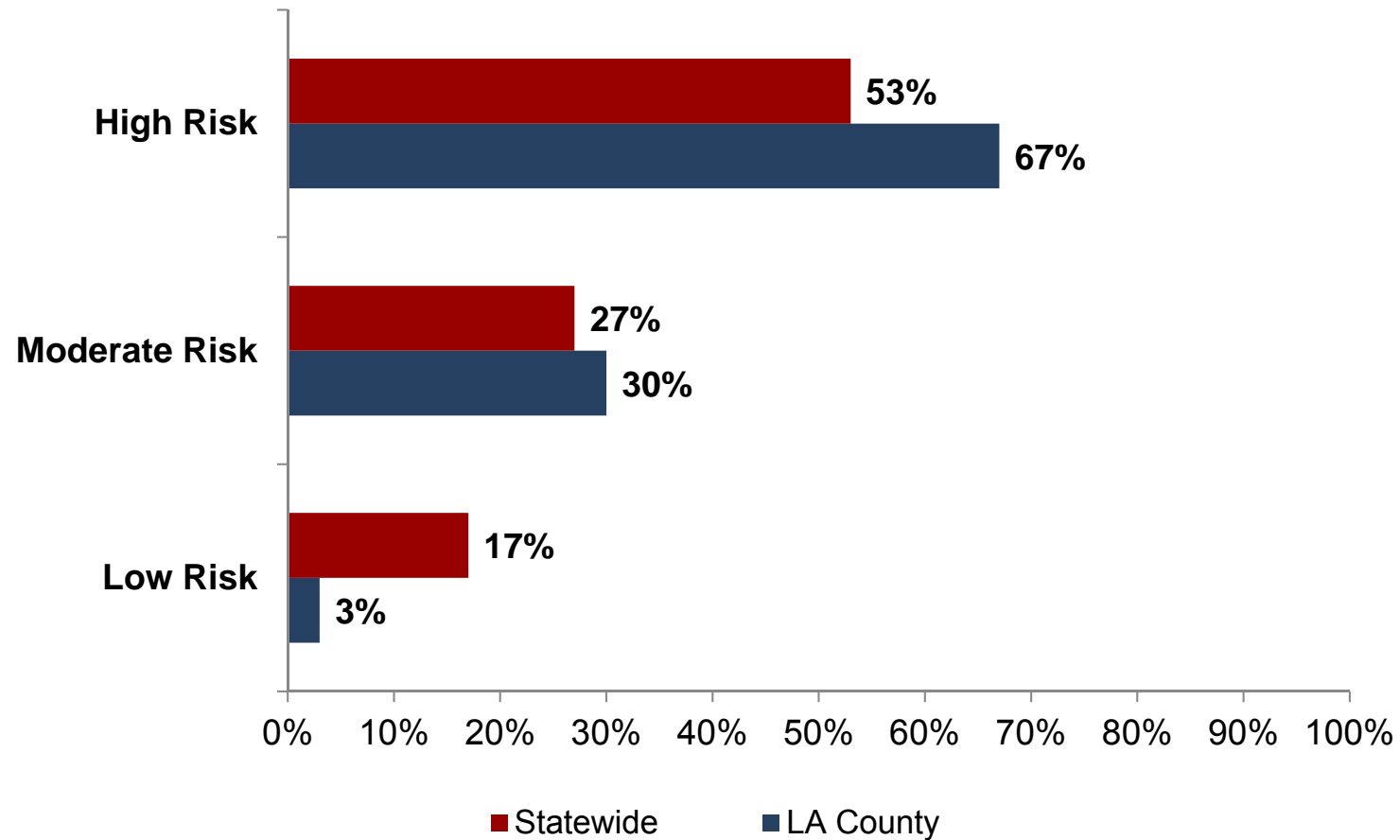






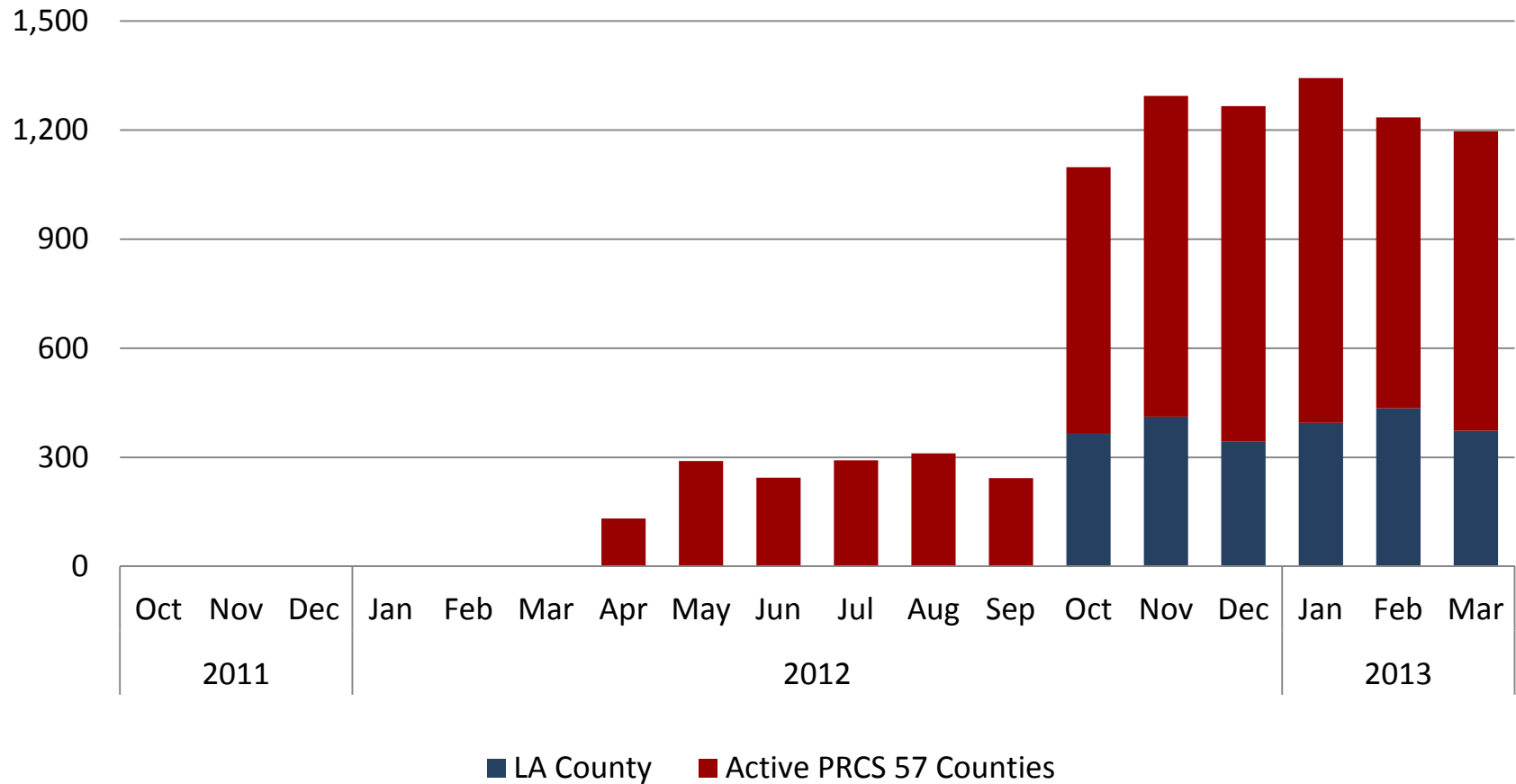
# Risk Assessment Distribution

## Statewide vs. Los Angeles County





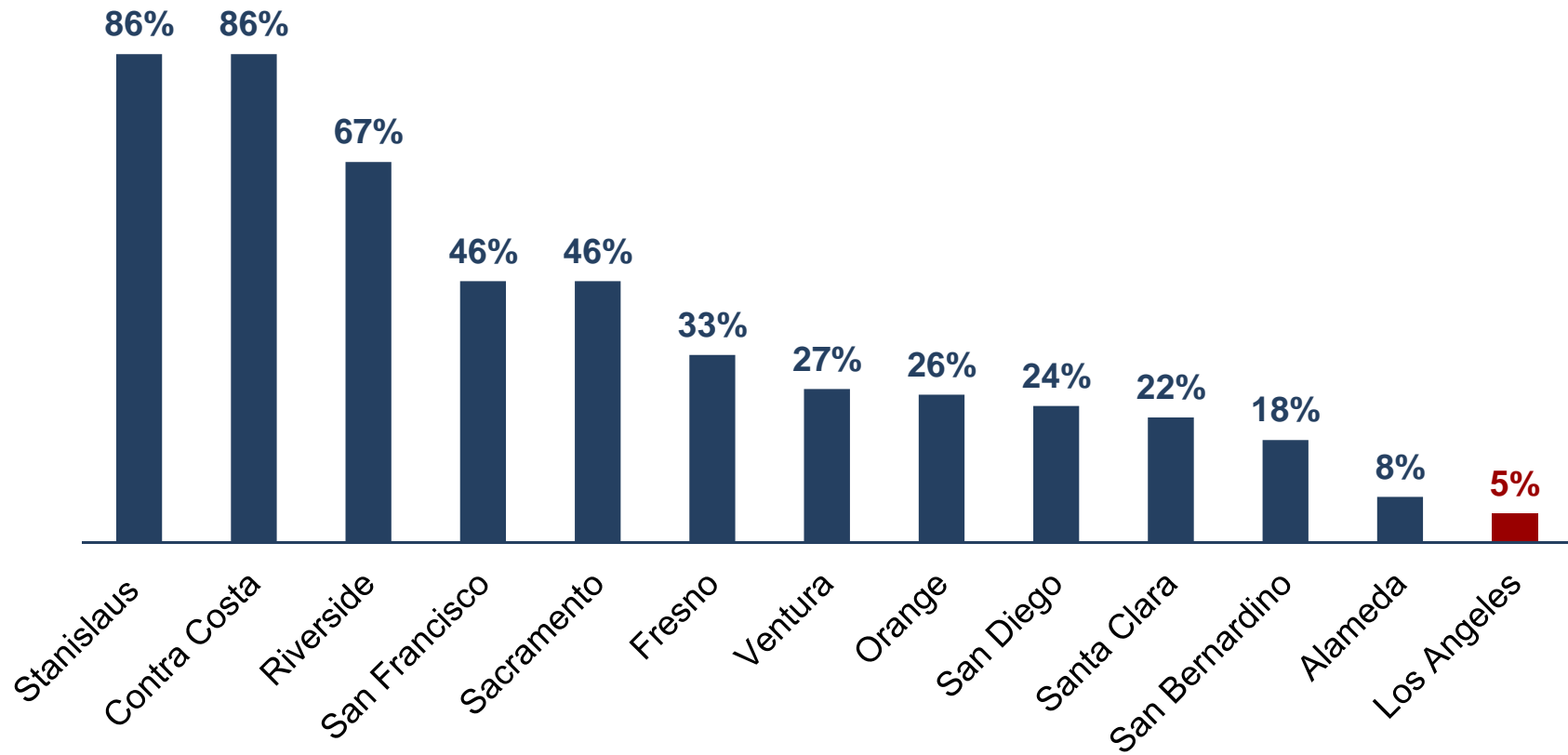
# PRCS Completing Supervision Statewide and Los Angeles County





# Split Sentences

October 2011 through September 2012

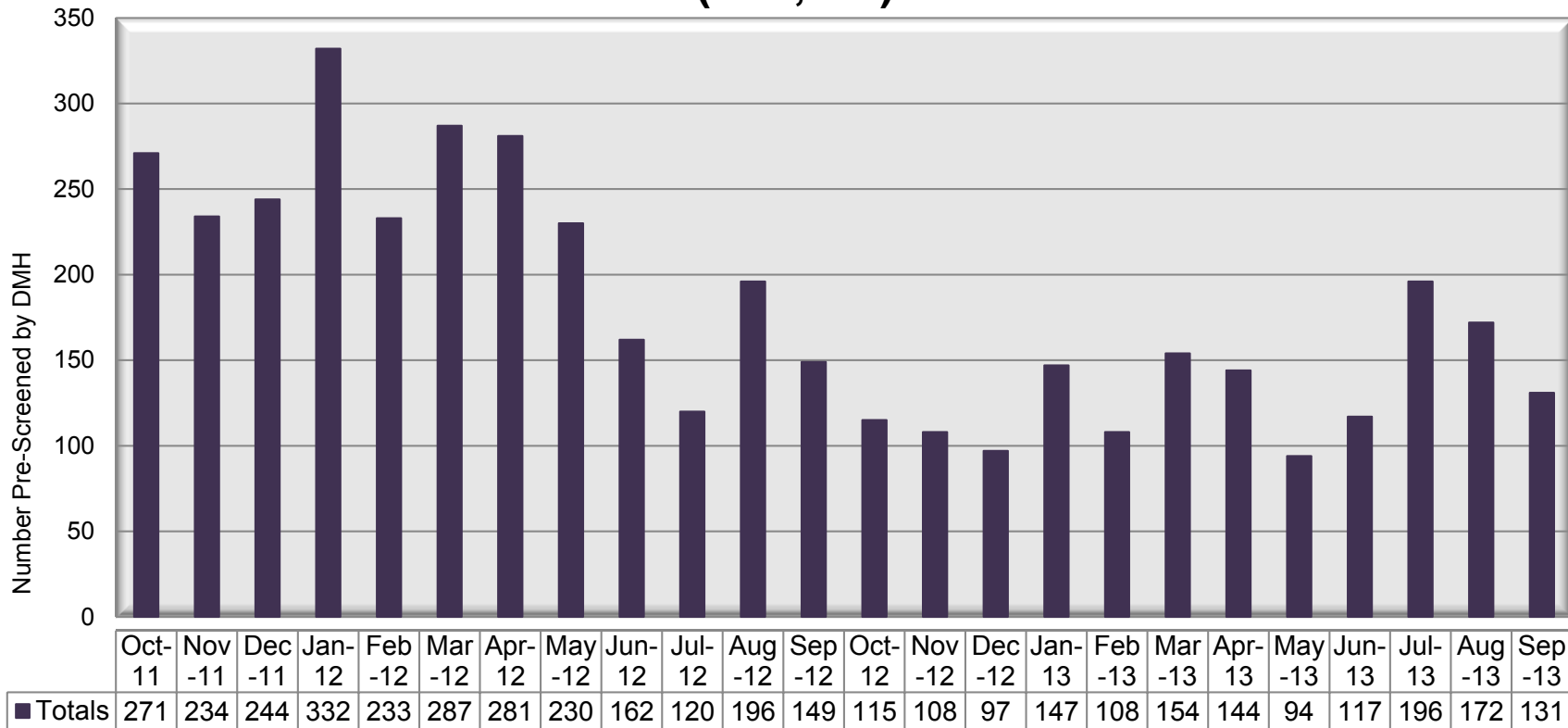


# Los Angeles County Department of Mental Health



# Pre-Screened

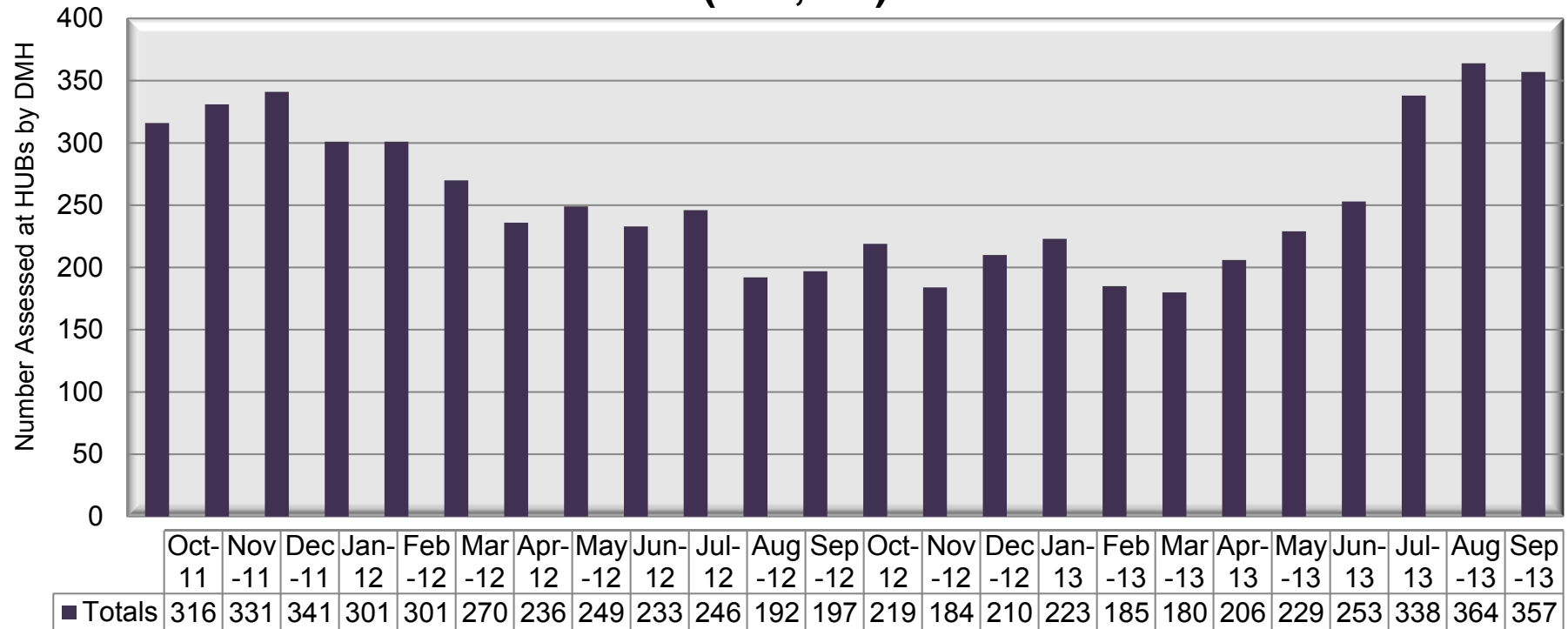
(N=4,483)



DMH staff is co-located at the Pre-Release Center to complete pre-release eligibility and identification of Post-released Supervised Persons (PSPs) with mental health or co-occurring mental health and substance abuse disorders.

# Assessed by DMH

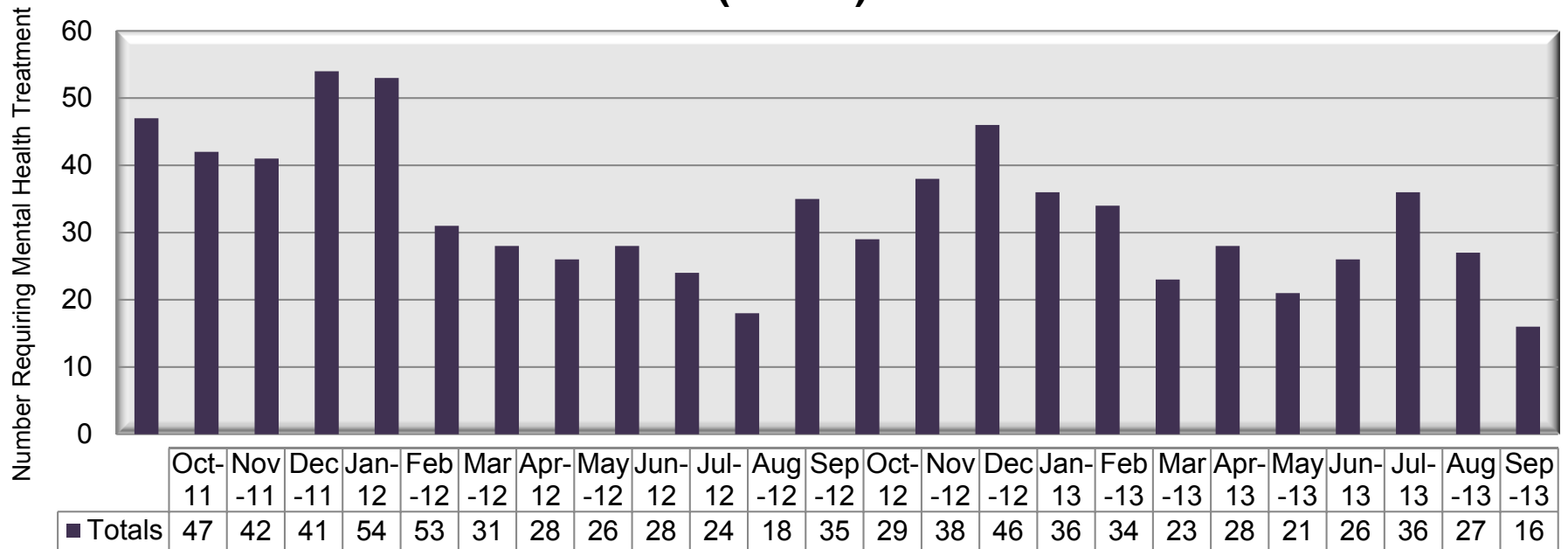
(N=6,161)



DMH continues to see a large volume of PSPs with mental health and co-occurring substance abuse disorders who are in need of assessment and treatment services. This includes those seen at the HUBs, urgent care centers, hospitals, Revocation Court, jails, and mental health clinics. DMH staff is being added in the third year to accommodate increased demand for mental health services in jails, Revocation Court and Countywide referrals and linkage to community-based treatment services.

# Requiring Mental Health Treatment Only

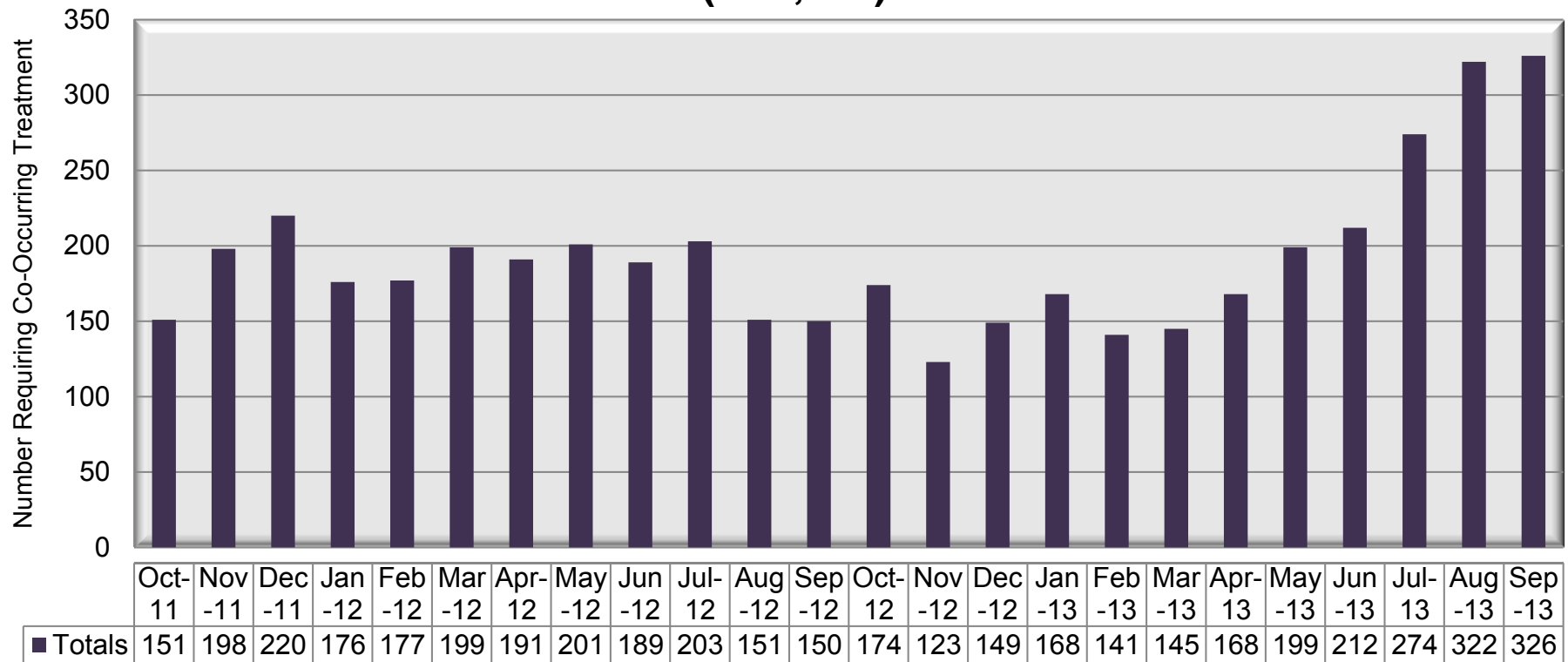
(N=787)



The data shows the number of PSPs requiring mental treatment only who are referred to community treatment services. Data is consistent with trends reported by California Department of Corrections and Rehabilitation, which fluctuates with the needs of the population being released at any given time. DMH will expand the number of specialty residential programs to serve individuals with more intensive mental health needs in the third year. In efforts to improve continuity of care, additional jail psychiatrists will be added to enhance DMH's ability to provide N3's and PSP's with prescriptions upon release from custody.

# Requiring Co-Occurring Treatment

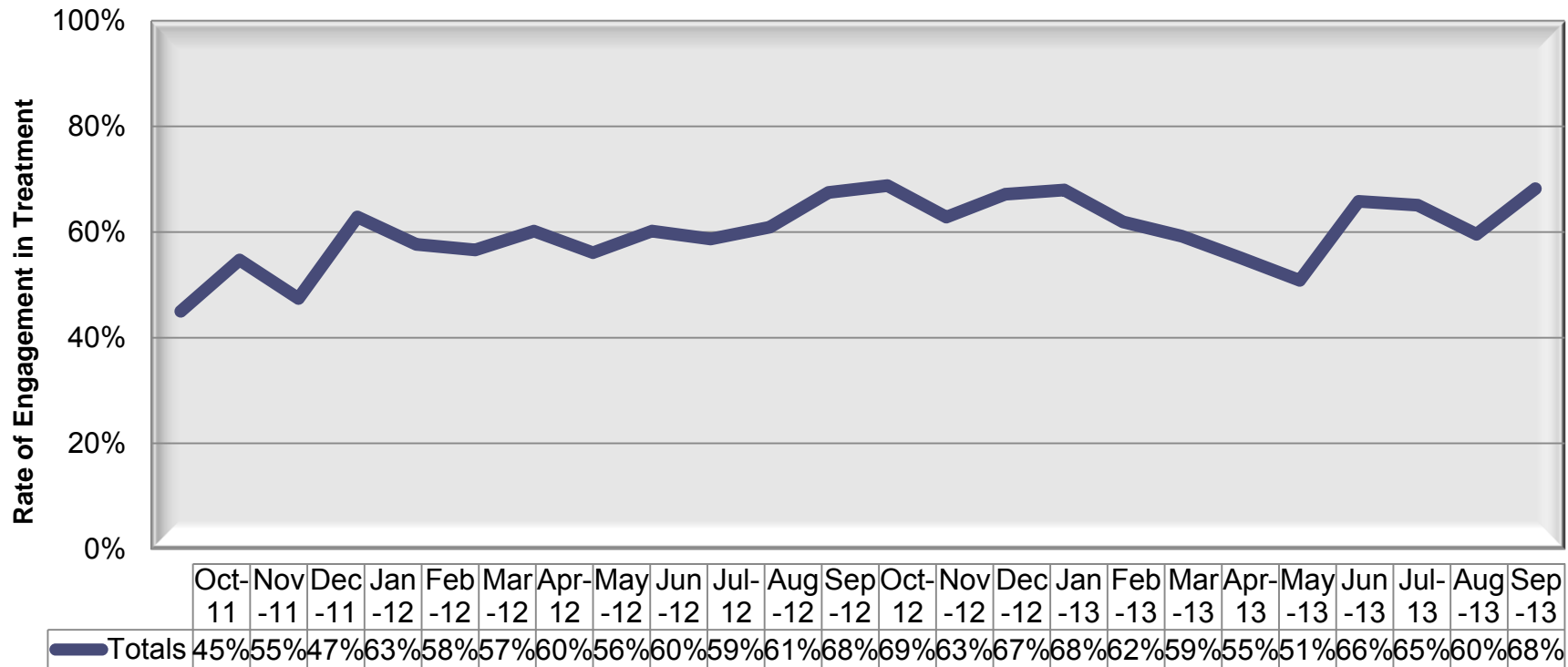
(N=4,607)



Data shows PSPs requiring and referred for co-occurring treatment services. The data are consistent with re-arrest data provided by the Department of Probation. DMH will increase specialized residential mental health and co-occurring treatment slots by 100% by March 2014 to address demand for this level of care as identified at the Revocation Court.



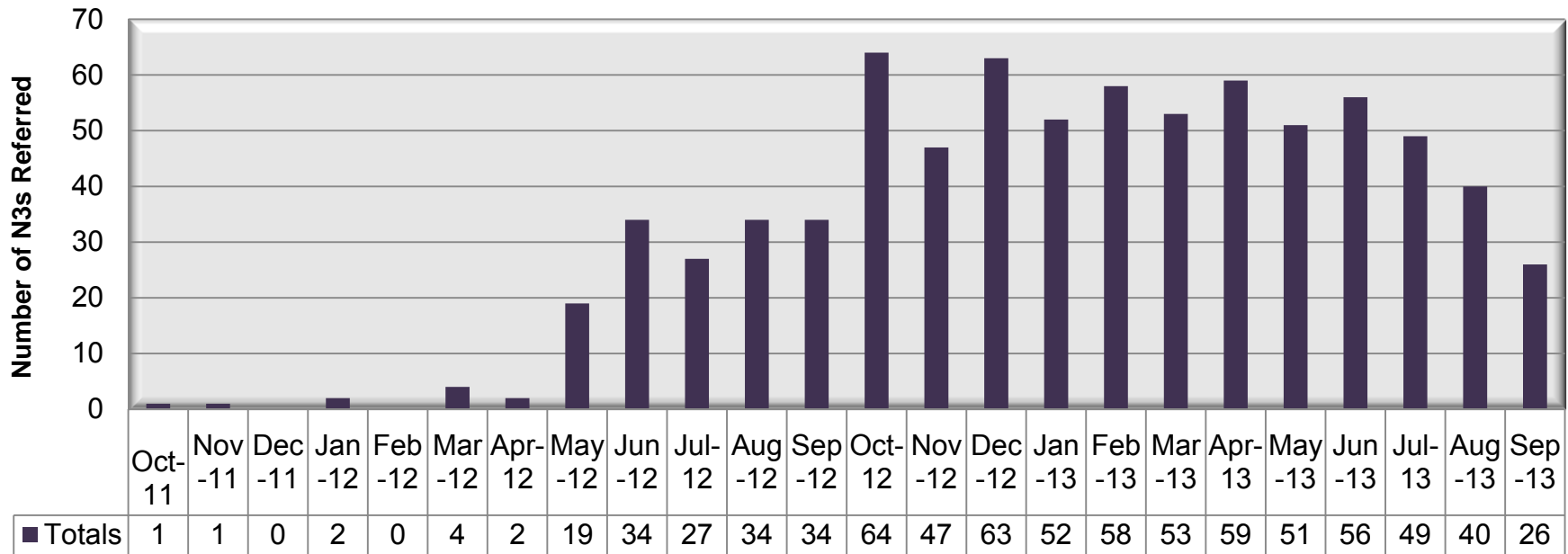
# Rate of Engagement



On January 17, 2012 Probation added a special condition approved by DMH mandating mental health treatment for PSPs in need of mental health treatment to improve rate of engagement. Initially, treatment engagement rates were at 45 percent but increased to and 68 percent by the end of year two. DMH is implementing a specialized training curriculum for AB 109 service providers to enhance engagement and treatment efforts and will increase jail in-reach activities by DMH providers.

# N3s Referred by Countywide Resource Management to Community Treatment Services

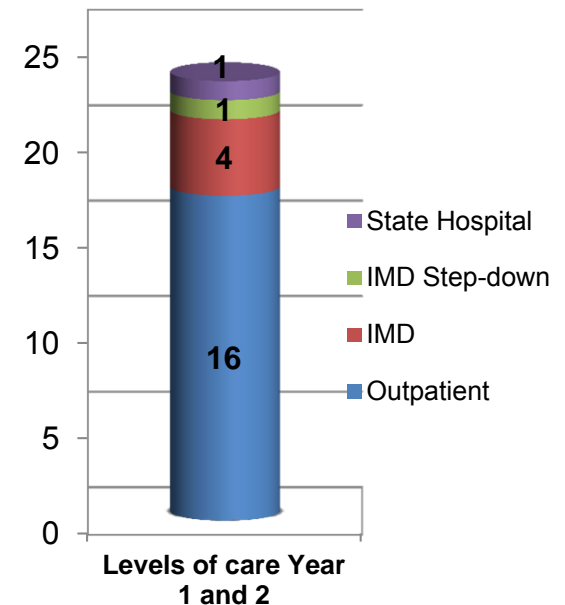
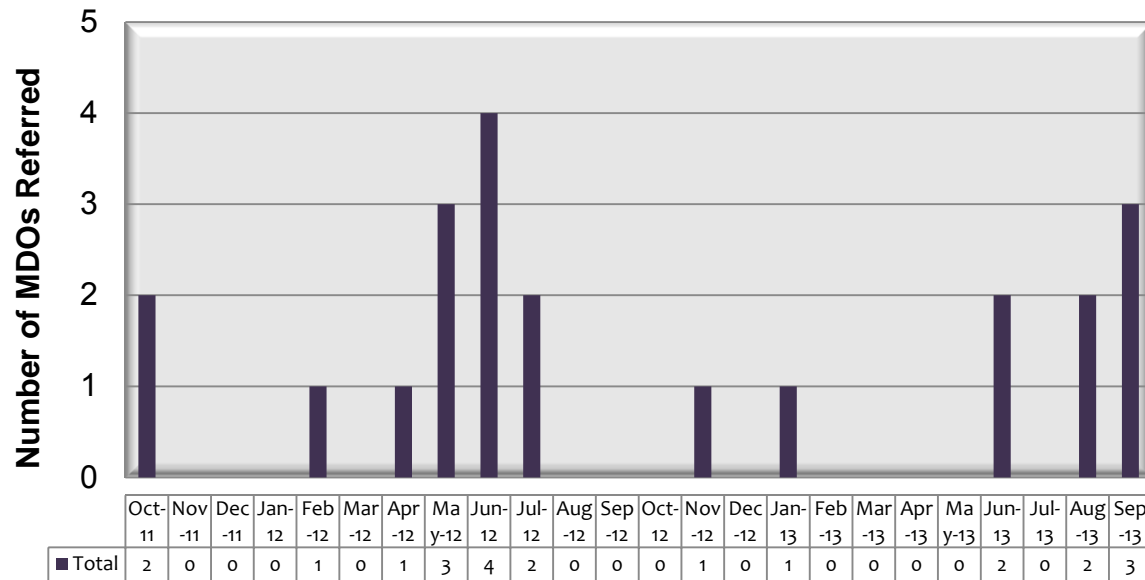
(N=776)



DMH is responsible for mental health care for N3s while incarcerated in the County jails and for appropriate linkage to community mental health treatment not funded under AB 109. DMH is increasing staff to coordinate release planning for the N3 population to appropriate community-based services.

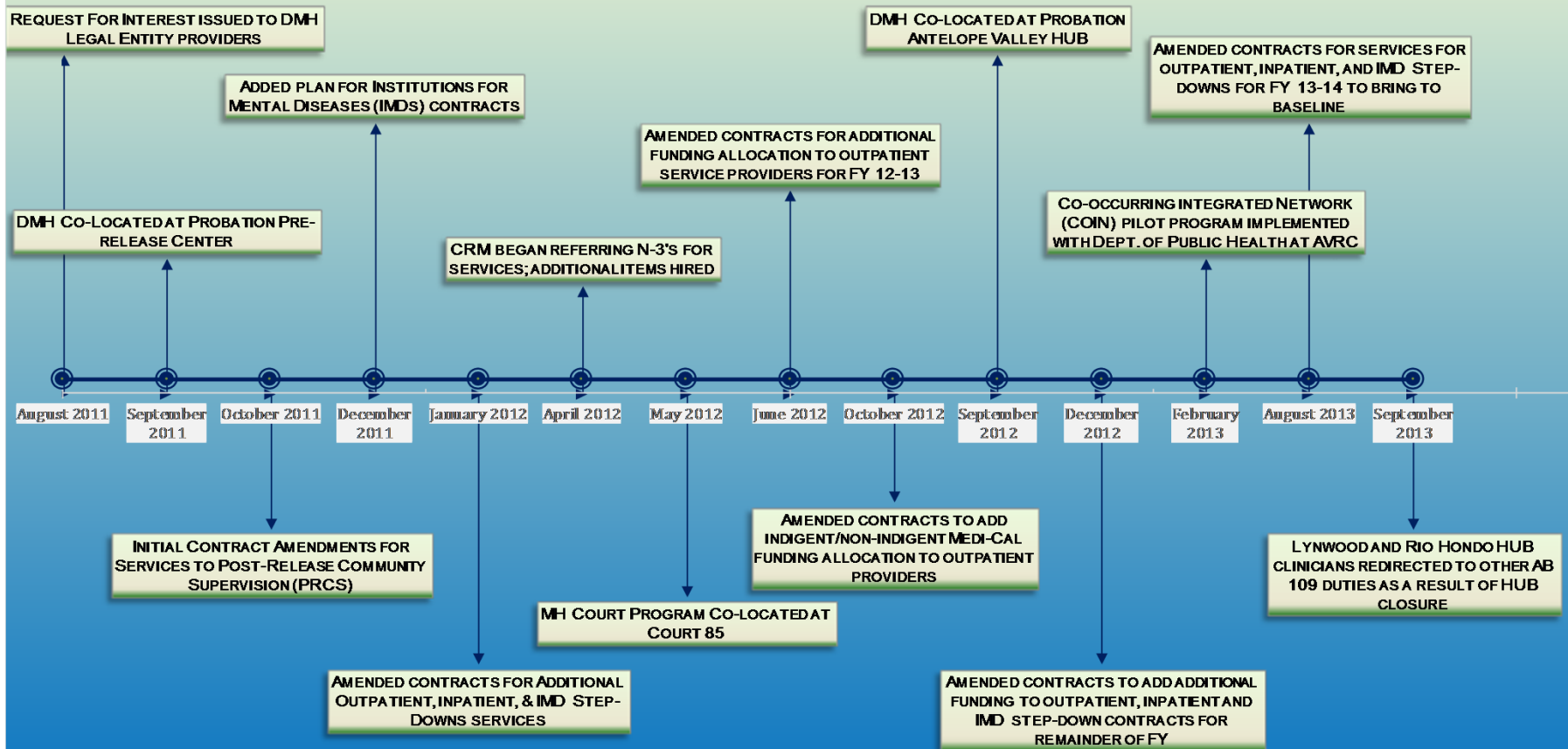
# Number of De-Certified Mentally Disordered Offenders Receiving Mental Health Services and Level of Care

**N=22**



The data reflects the number of individuals previously meeting Mentally Disordered Offender status who have been released under AB 109. In years one and two, a total of 22 former Mentally Disordered Offenders (MDOs) were released to the County requiring the following levels of care: 16-outpatient; 4-Institutions for Mental Disease (IMD) Step-down; 1-IMD; and 1-State Hospital. DMH is developing specialized mental health residential programs for this population due to the acuity and need for intensive mental health services and supervision.

## Development and Implementation of DMH Services for the AB 109 Population



# AB109 Going Forward

- Expansion of Jail Mental Health Services, Mental Health Court Program, and Countywide Resource Management staff by March 2014.
- Expansion of specialized intensive residential programs by March 2014.
- Specialized training curriculum for AB 109 providers to be implemented in January 2014.
- Increase jail in-reach capacity by the end of December 2013.

# Substance Abuse Prevention and Control



# AB 109 Community Assessment Service Centers (CASC) Workload Activity

AB 109 CASC Activity (Workload*)	Year One	Year Two	Total
Refusals	442	175	617
No Treatment Required	1,517	2,187	3,704
Others	312	467	779
<b>Treatment Referrals</b>	<b>2,210</b>	<b>4,046</b>	<b>6,256</b>
CASC Total Workload*	4,481	6,875	11,356
*Workload counts do NOT correspond to unique individuals.			

# AB 109 Treatment Episode Activity

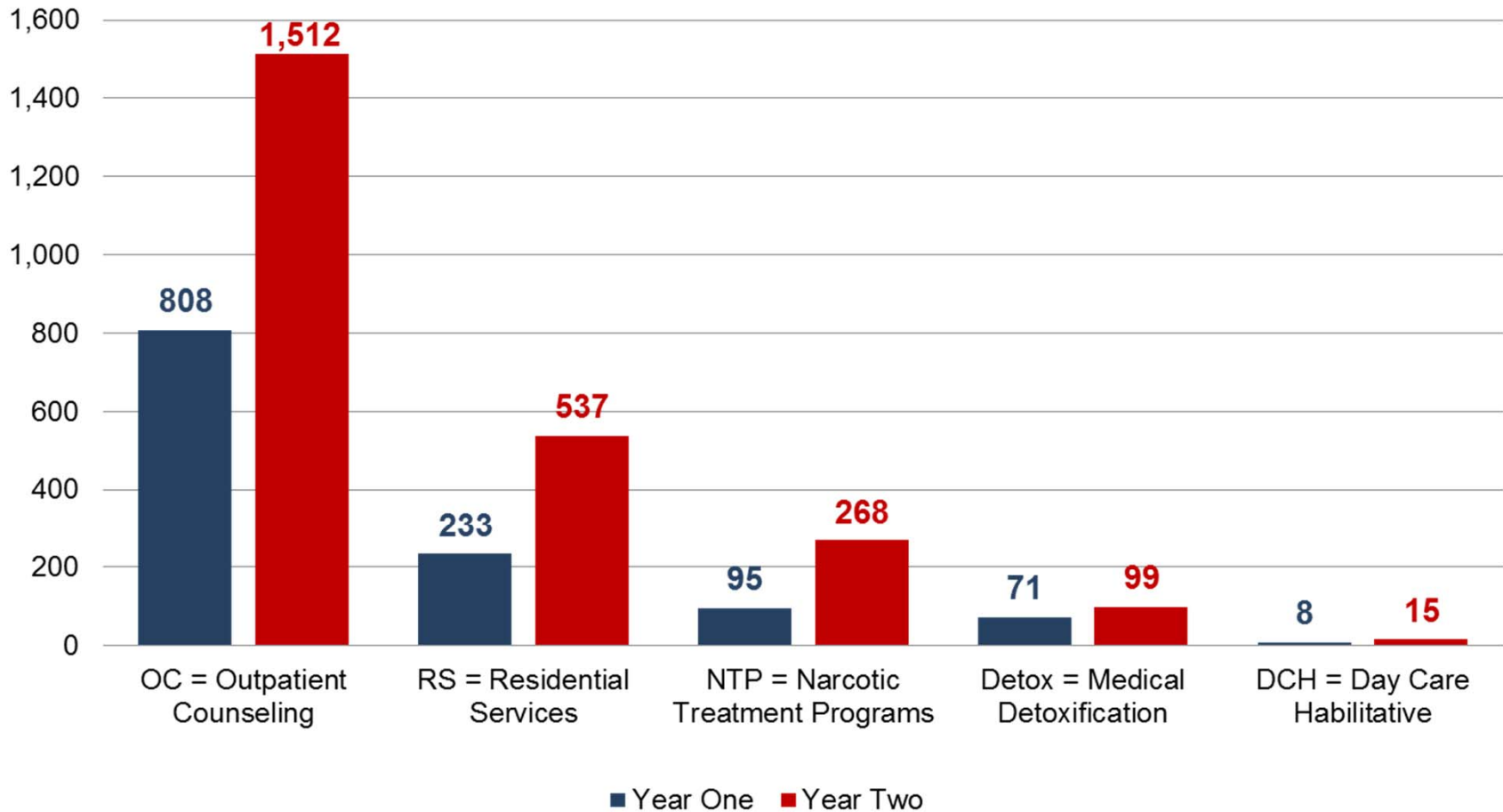
AB 109 Treatment Activity*	Year One	Year Two	Total
Admissions	1,215	2,431	3,646
Discharges	722	1,721	2,443

\* Includes In and Out of Network Admissions to SUD Treatment Services



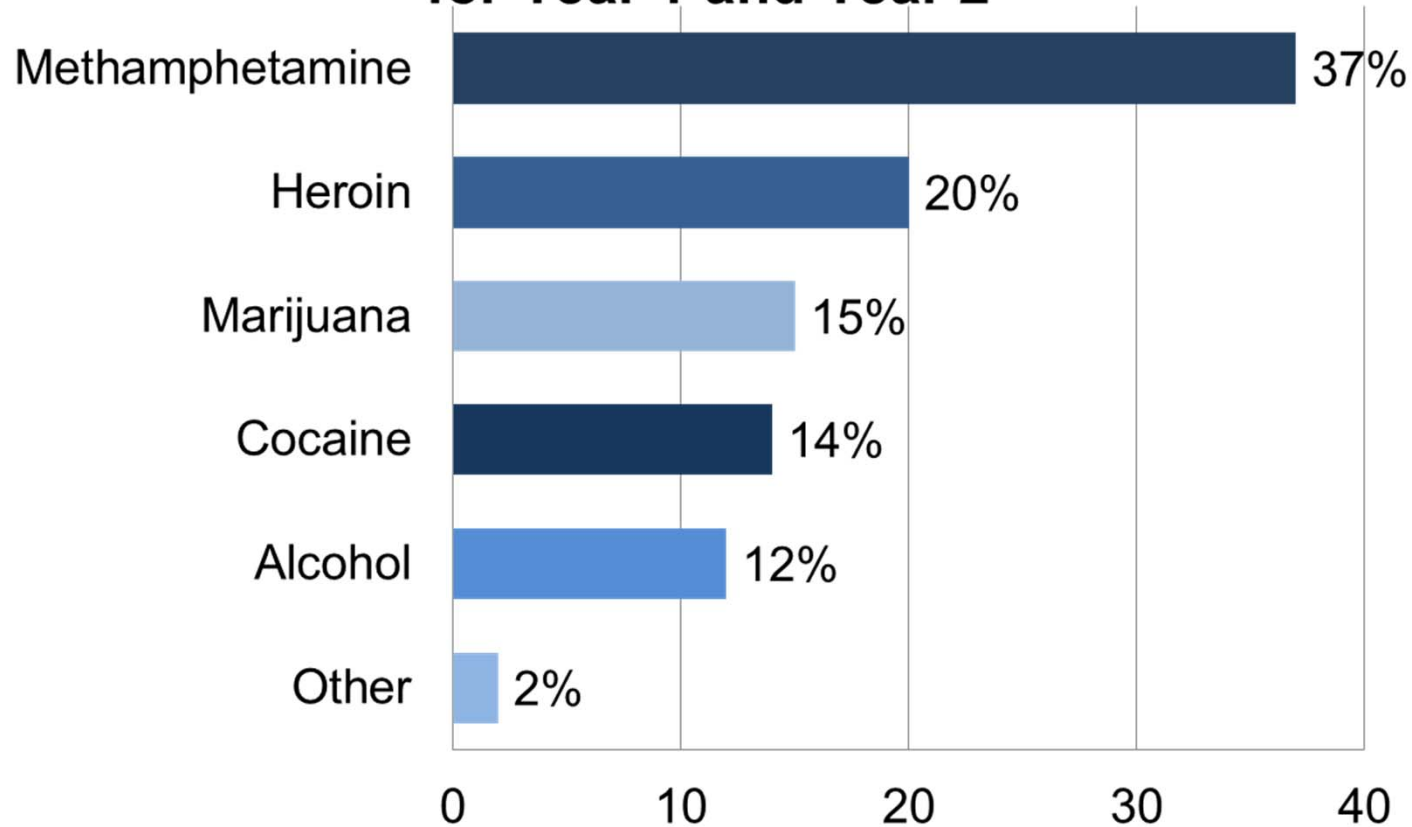
# AB 109 Substance Use Disorder Trends

## Treatment Admission by Modality



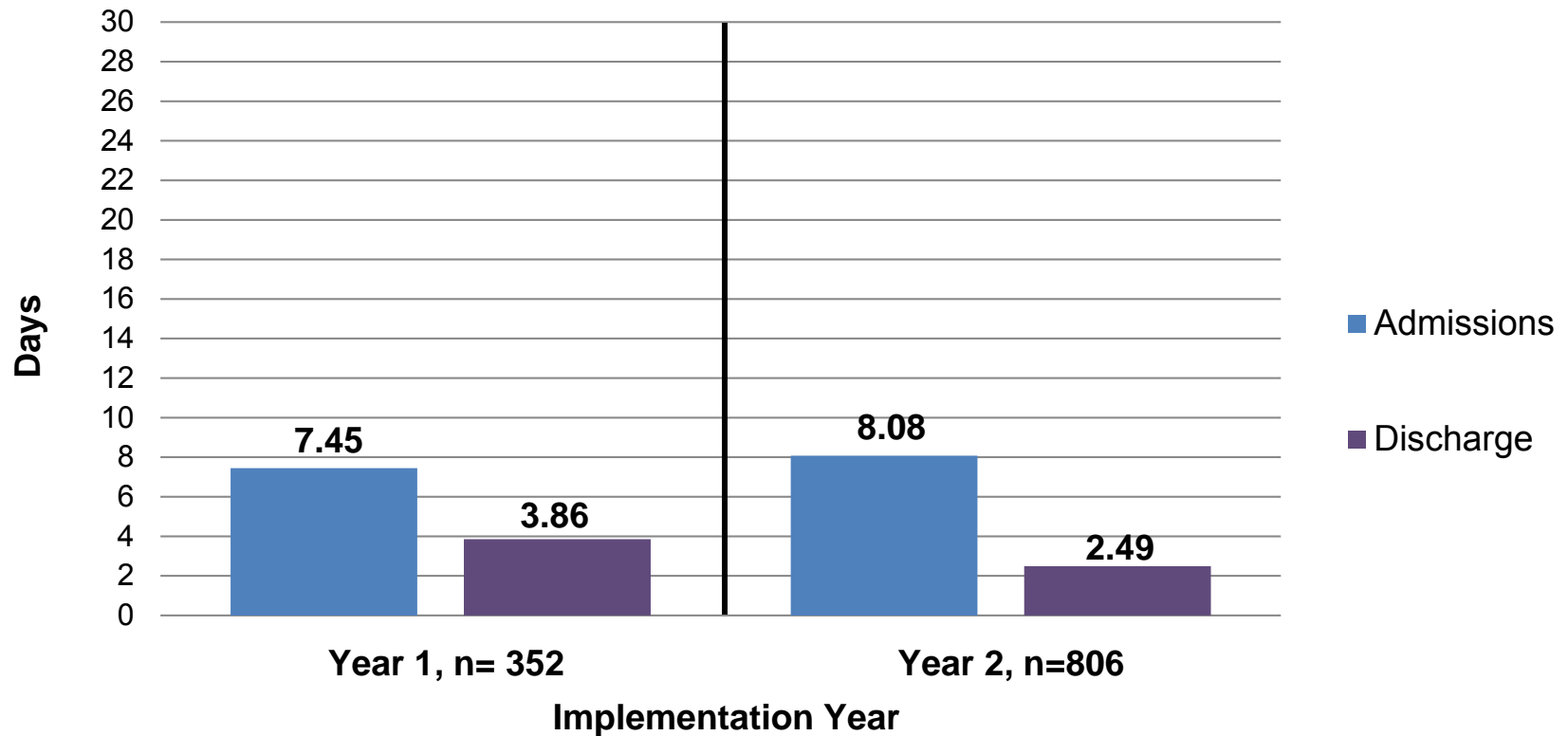
# AB 109 Substance Use Disorder Trends

**Primary Substance of Choice  
for Year 1 and Year 2**



# Reduction in Primary Substance Use: Admission to Discharge

Average Number of Days of Substance Use in the Last 30 Days



**Note:** Based on Los Angeles County Participant Reporting System

# Year Two (2) - AB 109

## Operational Responses Implemented

- Co-location of Community Assessment Service Centers (CASC)
- Release of Request for Statement of Qualifications (RFSQ) to expand Substance Use Disorder (SUD) Treatment Services
- Co-Occurring Integrated Care Network (COIN) Pilot Project
- Medication Assisted Treatment (MAT)

## Year Three (3) Priorities/Strategies

- Expansion of AB 109 Treatment Provider Network and Continuum of Services
- Improvement of CASC Assessment and Referral Process
- Training of AB 109 Treatment Provider Network
- Affordable Care Act

# Los Angeles County Sheriff's Department





# Yearly Comparison

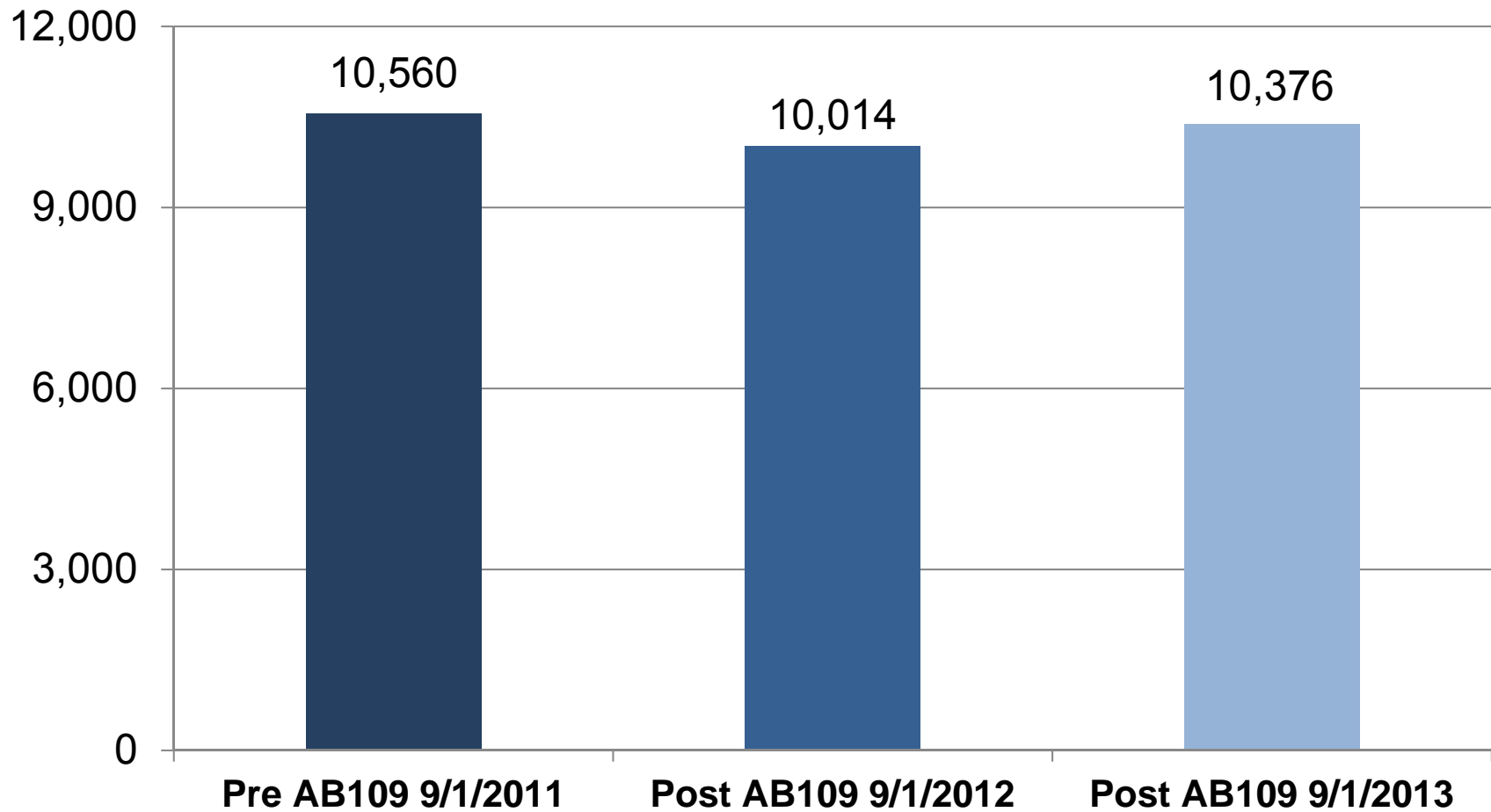
As of: 9/30/13

## PAROLE COMPLIANCE TEAM STATS

	2011 / 2012	2012 / 2013
PSP Arrests	224	530
Other Arrests	907	423
PSP PAL Arrests	40	193
Firearms Seized	133	152
Compliance Checks Conducted	1,123	1,273



# Pre Sentenced

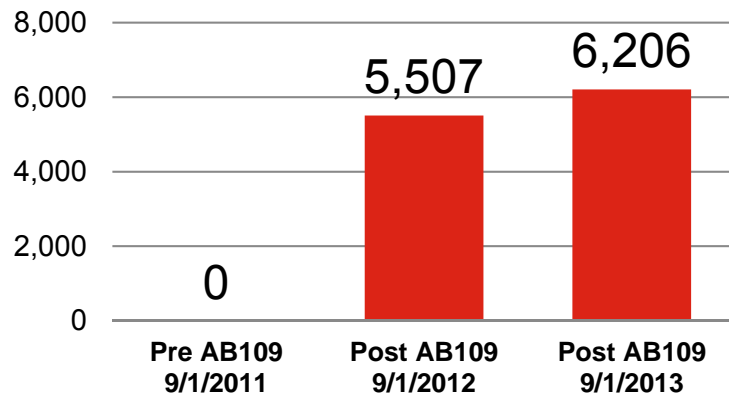




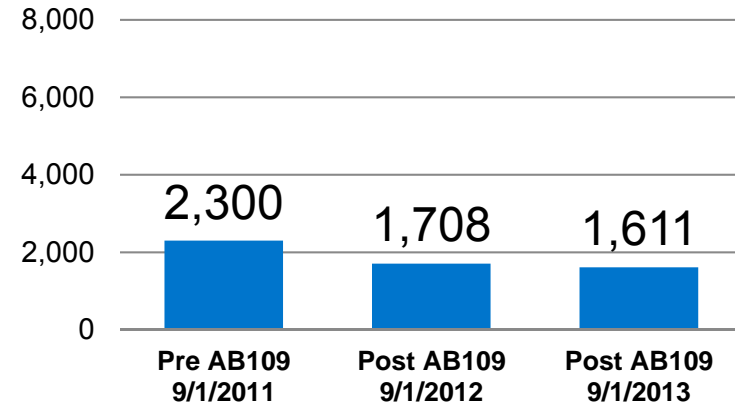


# Sentenced

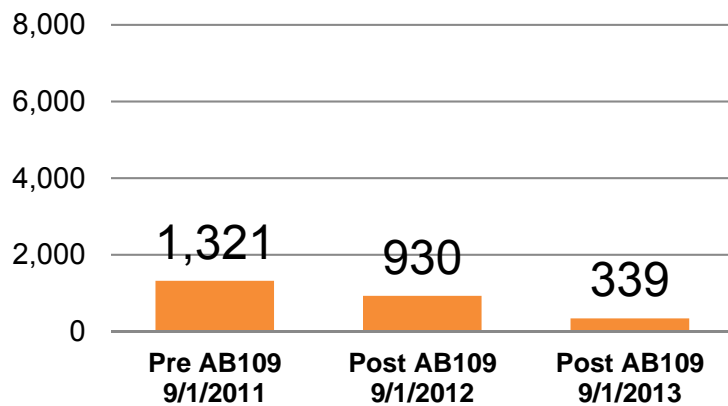
## AB109



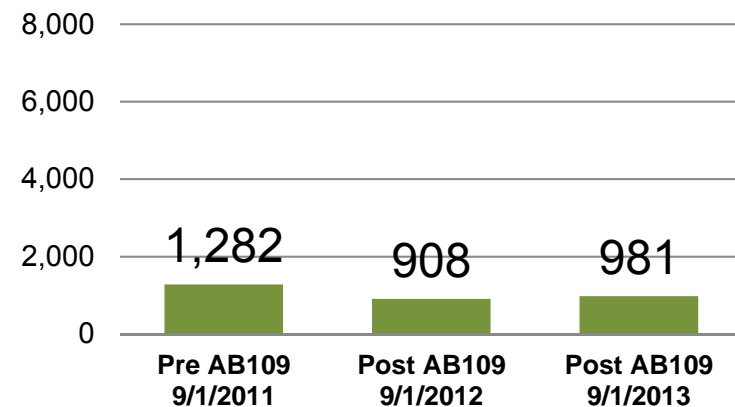
## County Sentenced



## Parole Revocators



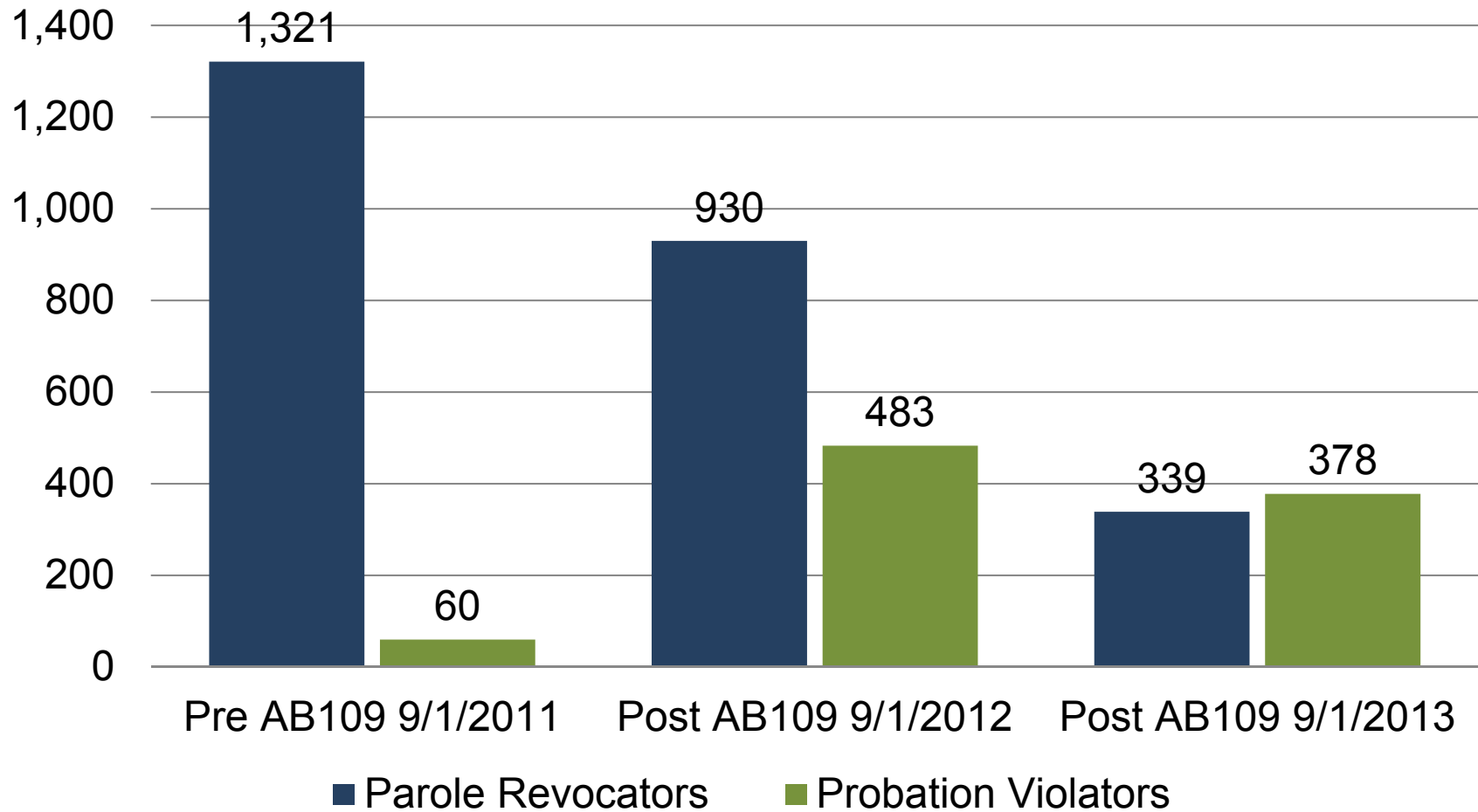
## State Prison



\*\* Parole revocators include inmates previously sentenced to State Prison (DCL hold).



# Sentenced





# AB 109 Year One and Two

	Year One November 30, 2012	Year Two November 30, 2013
N3 Population	5,831	6,190
N3 Sentences (November 1-30)	596	595
Released	621	661
Average Court Given Sentence	2.1 Years	2.6 Years
I/M Serving Less than One (1) Year	3,705	3,579
I/M with 24+ Months to Serve	354	472
# of Court Sentences Over Ten (10) Years	26	42
Leading Conviction Category	Narcotics (i.e. 11350HS, 11377HS)	Narcotics (i.e. 11350HS, 11377HS)



# Questions

