



COUNTYWIDE CRIMINAL JUSTICE COORDINATION COMMITTEE



May 1, 2012

TO: Supervisor Zev Yaroslavsky, Chair
Supervisor Gloria Molina
Supervisor Mark Ridley-Thomas
Supervisor Don Knabe
Supervisor Michael Antonovich

FROM: Mark Delgado, Executive Director
Countywide Criminal Justice Coordination Committee

SUBJECT: Public Safety Realignment Implementation Update No. 5 – February 2012 to
March 2012 (Related to Item S-1 of the August 30, 2011 Board Agenda)

On August 30, 2011, your Board directed the Countywide Criminal Justice Coordination Committee (CCJCC) to work with impacted departments and provide status reports on public safety realignment implementation in the County. This report and data attachments provide information captured by departments through March 31, 2012.

SUMMARY

- Through March, 6,523 individuals were released on Postrelease Community Supervision (PCS) to Los Angeles County.
 - Probation reports that 85 percent of Postrelease Supervised Persons (PSPs) report to the hubs within five days of their release from prison; 90 percent report within 10 days.
 - Referrals of PSPs to treatment and rehabilitative support services continue to increase, but the percentage of those receiving services remains low. Implementation of the Treatment Court Probation Exchange (TCPX) system to track and coordinate referrals; assignment of mandatory treatment conditions; and utilization of the Haight Ashbury service contract are efforts to continue improvement in this area.
 - The number of absconder warrants requested by Probation significantly increased in February and March. Nearly 70% of all warrants requested since October 1st were requested in February and March (555 out of 806). Similarly, 92 of the 98 total petitions for revocation were filed in February and March. These increases are partly due to Probation's establishment of Compliance Teams to assist with monitoring and processing of needed enforcement actions.
 - The County jail population continues to increase due to the realigned populations now housed locally: specified non-violent, non-serious, non-sexual (N3) offenders and PCS and State parole violators. On September 30, 2011, the jail population was 15,463. By March 31, 2012, the population had increased to 17,460. The realigned population accounted for 27% of that population: 3,957 N3 offenders (22.5%) and 815 sentenced parole violators (4.5%).
-

POSTRELEASE COMMUNITY SUPERVISION (PCS)

Pre-release Packets and Screening

Probation received 1,128 pre-release packets in February and 1,388 in March. From October to March, the department processed 9,418 of the 9,684 total pre-release packets received.

The Department of Mental Health (DMH) continues to prescreen packets that indicate a mental health issue may be present. The department prescreened a total of 1,632 packets from October through the end of March.

Between October 1, 2011 and March 31, 2012, 6,523 PSPs were released to the County on PCS according to the California Department of Corrections and Rehabilitation (CDCR) Law Enforcement Automated Data System (LEADS). As indicated in Table 1, the number of PSPs released in the first six months is trending down, consistent with initial projections.

Table 1 – PSP Release Numbers

	OCT	NOV	DEC	JAN	FEB	MAR	TOTAL
PSPs released	1,038	1,205	1,170	1,106	1,039	965	6,523

Hub Intake/Assessment

In February and March, 899 and 897 PSPs reported to the hubs, respectively, for intake and assessment. Probation reports that 85 percent of released PSPs report to the hubs within five days; 90 percent report within 10 days.

Departments highlight the following developments related to hub intake processes:

- Probation continues drug testing at the hubs of individuals identified in the pre-release packets as having substance abuse histories or potential treatment needs.
- Co-located DMH staff at the hubs assessed 1,421 individuals for mental health needs (22% of the reporting population) by the end of March.
- The Department of Public and Social Services (DPSS) screened 3,612 PSPs for benefits eligibility and has enrolled 1,125 (31%) in benefits programs, primarily CalFresh and General Relief.
- The reconfiguration of Probation’s existing Antelope Valley Adult Area Office to serve as a temporary hub is near completion. The launch of this hub, targeted for the week of May 7th, will provide a sixth hub in the County. Probation has submitted a Space Request Evaluation to the Chief Executive Office to identify a permanent site for the hub.
- Working with the Department of Public Health–Substance Abuse Prevention and Control (DPH-SAPC), Probation has designated space at the Lynwood and Day Reporting Center hubs for the co-location of staff from Community Assessment Service Centers (CASCs).

This co-location, pending the resolution of data security issues, is to address the low show rates of PSPs to the CASCs for substance abuse assessments. While show rates have increased each month, only 51% of those referred to CASCs reported by the end of March.

PCS Population Characteristics and Supervision Challenges

PSPs continue to assess at higher levels of risk to recidivate than Probation anticipated. Through March, 61% of PSPs had assessed as high risk, 36% as medium risk, and 3% as low risk. Similarly, DMH reports that the acuity of clients continues to be higher than anticipated.

PSPs with acute medical and mental health related issues continue to be released on a regular basis from CDCR. Significant resources are required to coordinate the transfer, transportation, assessment, and potential placement of these individuals. In February and March, there were a total of 25 such cases requiring special handling, including two cases in which PSPs required skilled nursing facility placement upon release from prison.

Provision of Treatment Services to Individuals

Generally, two factors contribute to the level of services PSPs receive: 1) the extent services are available and the effectiveness of the established system of delivery and 2) the willingness of PSPs to engage in treatment-related services. While the process for referring and linking PSPs to treatment services continues to improve, the overall percentage of PSPs successfully accessing treatment remains low. Tables 2 and 3 show PSP show rates for substance abuse assessments and treatment referrals.¹

Table 2 –Referrals for Substance Abuse Assessment and Show Rates (Cumulative)

	OCT	NOV	DEC	JAN	FEB	MAR
Referrals to CASCs for Substance Abuse Assessment	333	716	1,066	1,431	1,815	2,306
Number reporting to CASCs	9 3%	65 9%	265 25%	495 35%	770 42%	1,181 51%

Table 3 – Substance Abuse Treatment Referrals and Entrance Rates (Cumulative)

	OCT	NOV	DEC	JAN	FEB	MAR
Number of CASC referrals for treatment	8	41	128	212	363	572
Number PSPs entering treatment	6 75%	28 68%	58 45%	93 44%	142 39%	221 39%

Table 4 shows the percentage of PSPs refusing mental health services following an assessment that determined need. Data are organized according to month of release and are not cumulative.

¹ Data in Table 2 and 3 are cumulative through the end of each month and are not organized by month of release.

Table 4 – Mental Health Treatment Determinations and PSP Refusals (By Month of Release)

	OCT	NOV	DEC	JAN	FEB	MAR
DMH assessments at hubs – treatment needed	320	338	321	313	304	227
Number refusing mental health treatment at hubs	51 16%	66 20%	74 23%	39 12%	40 13%	49 22%

DMH reports significant assessment and treatment data in Attachment II and provides the following analysis:

- PSP clients have higher acuity levels than anticipated and require extensive services.
- PSPs tracked by DMH who are in treatment have performed better than those not in treatment.
- There are indications that mandatory treatment conditions have led to an increase in PSPs accepting treatment. PSPs who previously refused services have re-engaged.
- It is extremely difficult to track services received by the PCS population. Some referred PSPs refuse treatment, only to be later identified as having received treatment through another avenue (from a direct contract service provider, in jail, etc.).

On April 17, 2012, Probation submitted a report to your Board responding to a Board motion to identify feasible strategies for improving the level of treatment engagement among PSPs.

Departments continue to respond to this motion and identify strategies and process improvements to address this issue.

- Mandatory treatment conditions – The Probation Department continues to add mandatory treatment conditions in an effort to increase PSP compliance with treatment plans. Through March, Probation added 3,469 substance abuse treatment conditions and 1,604 mental health treatment conditions.
- Homeless and Employment Services – Probation has made significant efforts to conduct outreach for homeless services and for employment. A condition of supervision for cooperating with a plan to seek and maintain employment, education or vocational training was added in mid-March.
- Haight Ashbury Contract – The County’s sole source contract with Haight Ashbury to address support services needs was awarded in December. Following the required background clearance process, services were available beginning in early February.

In February and March, Probation made 412 total referrals to service for 382 PSPs. The most common referrals were for transitional housing (191) and job readiness/job placement assistance (177).

- Request for Proposals (RFP) – Probation recalled the initial RFP for services. The purpose of this action was to gather additional information and input so that the department could most effectively identify appropriate providers of needed services. A

community forum was held in March with potential providers and other stakeholders to discuss the reissuance of the RFP. The reissued RFP is expected in July.

- TCPX Enhancement – As previously reported, DPH-SAPC – in coordination with Probation, DMH, and Internal Services Department – has modified the TCPX data system to provide real time tracking of treatment referrals, assessments and placements, progress reports, and terminations. Training of system users in these departments is complete, and historical information is being transferred to the system for tracking purposes. Probation began using TCPX at the hubs in March.
- Co-location of CASC Assessment Staff – As discussed above, only 51% of PSPs referred to CASCs for substance abuse assessments had shown through the end of March. Probation has designated space at the Lynwood and Day Reporting Center hubs for the co-location of staff from the CASCs. This co-location is pending, as data security issues for non-County CASC staff are being addressed. Expansion of CASC co-location to the other hubs will occur thereafter.

Finally, two additional treatment-related issues have emerged that should be tracked and addressed moving forward:

- DMH and DPH-SAPC have identified increasing numbers of PSPs receiving services who were never referred or assessed. For example, DMH has identified 154 clients receiving service who were never pre-screened or assessed at the hubs.
- As more PSPs are released statewide, departments are beginning to see individuals accessing services in Los Angeles County though they are on PCS in another jurisdiction.

Supervision and Enforcement

Probation, the Sheriff’s Department, and the District Attorney’s Office (D.A.) continue to track data on warrants, arrests, prosecutions, and other PCS enforcement efforts. Table 5 summarizes various enforcement actions taken from realignment’s October 1st start date through the end of March.

Table 5 – PCS Enforcement Efforts

	OCT	NOV	DEC	JAN	FEB	MAR	TOTAL
Sheriff and LAPD attempts to contact PSP “no shows”	46	139	185	157	151	183	861
Absconder warrants requested by Probation	0	95	88	68	144	411	806
New cases presented to the D.A. for filing				406*	188	257	851

* Number is cumulative from October to January.

- Attempts to contact non-reporting PSPs by Sheriff and LAPD staff remain an important part of the process for engaging PSPs and processing needed warrants.
- The number of warrants requested for absconders increased significantly in February and March. This is partly attributable to the implementation of Compliance Teams by Probation. The teams reviewed approximately 750 cases during this period and assisted with the processing of warrant requests.
- The majority of cases presented to the D.A. were theft- or drug-related, but some included serious and/or violent charges. For completed cases that resulted in a state prison sentence, it would be appropriate for Probation to terminate supervision. Such terminations, as well as terminations for other reasons, will increasingly impact overall PCS caseload numbers.

The Sheriff’s Department also tracks arrests of PSPs countywide by matching bookings against the LEADS database of released PSPs. Table 6 provides arrest and booking data through March.

Table 6 – Countywide Arrests of PSPs

	OCT	NOV	DEC	JAN	FEB	MAR	TOTAL
Bookings for new offenses	33	95	202	321	410	513	1,574
Bookings related to prior matters	47	70	75	75	75	75	417
Total Bookings	80	165	277	396	485	588	1,991

- As Table 6 indicates, 417 of the recorded arrests were not actually for new offenses but for direct transports to County jail from CDCR in advance of a court appearance on a prior matter, such as warrants or previous charges. While those 417 bookings are not technically arrests for new offenses, this data is captured as part of the Sheriff’s AB 109 workload. In addition, the 1,574 arrests captured as new offenses include those who were arrested on a PSP warrant or booked into County jail on a flash incarceration.

Intermediate Sanctions and Revocations

Violations and non-compliance with PCS terms of supervision can result in a range of sanctions, including revocation. To revoke PCS, Probation must petition the Court and demonstrate at a Court hearing that the violation occurred. The D.A., Public Defender, and Alternate Public Defender also participate in this process. The maximum sanction for a PCS revocation is 180 days in County jail, minus the state-mandated credits (90 days).

Intermediate Sanctions

Prior to petitioning the Court for revocation, Probation can utilize a range of intermediate sanctions to respond to issues of non-compliance, including: verbal reprimand, increase in

reporting requirements, additional conditions of supervision, Probation Adult Alternative Work Service (PAAWS), GPS and/or electronic monitoring, and flash incarceration for up to 10 days.

In response to your Board's April 3rd action, Probation is developing a sanctions grid that outlines the use of available sanctions. Following your Board's request, Probation implemented a tracking process of the use of such sanctions. While there is limited data on sanctions for the period covered by this report, data on the use of sanctions will be reported in future reports.

Revocations

As reported in the March 1st report to your Board, probable cause hearings (PCHs) have been replaced by a probable cause determination process administered by designated officers within the Probation Department. This change has streamlined the revocation process.

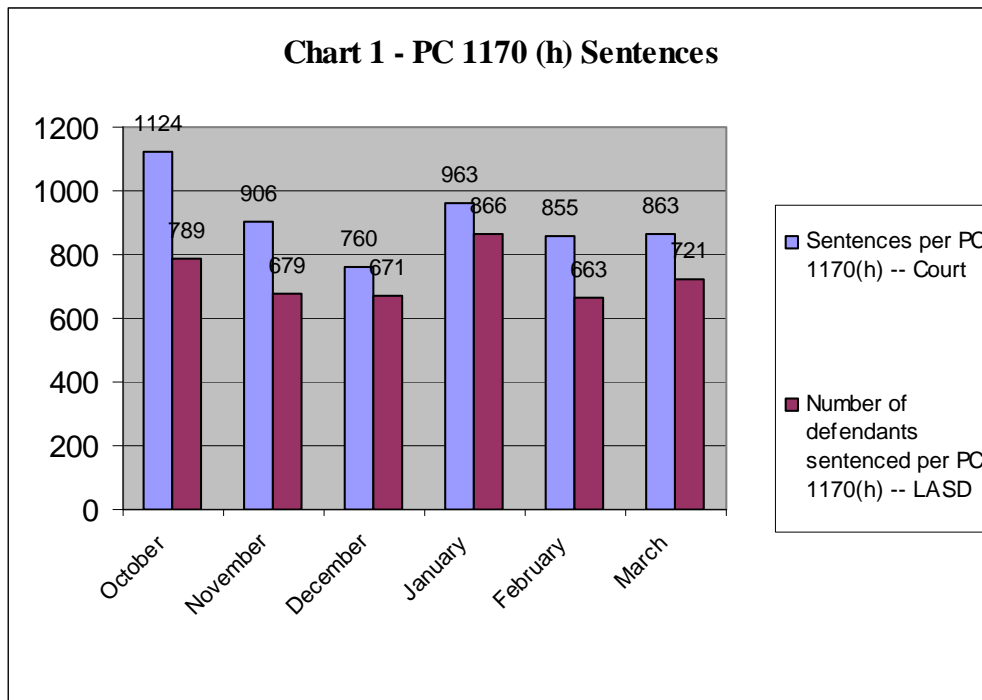
As expected, revocations have increased significantly in recent months. In February and March, 92 petitions for revocation were submitted to the Court. Only six such petitions were submitted the previous four months of the program. This increase is due to several causes, including:

- more PSPs in the community
- failure of intermediate sanctions to correct violation behavior
- the implementation of Compliance Teams by Probation

CUSTODY

Sentences per Penal Code 1170 (h)

Realignment legislation enacted Penal Code 1170 (h), which specifies that certain non-violent, non-serious, non-sexual felony offenders (N3) are no longer eligible for state prison sentences. Chart 2 illustrates how many PC 1170 (h) sentences were given and to how many defendants.



Departments highlight the following facts related to PC 1170 (h) sentences:

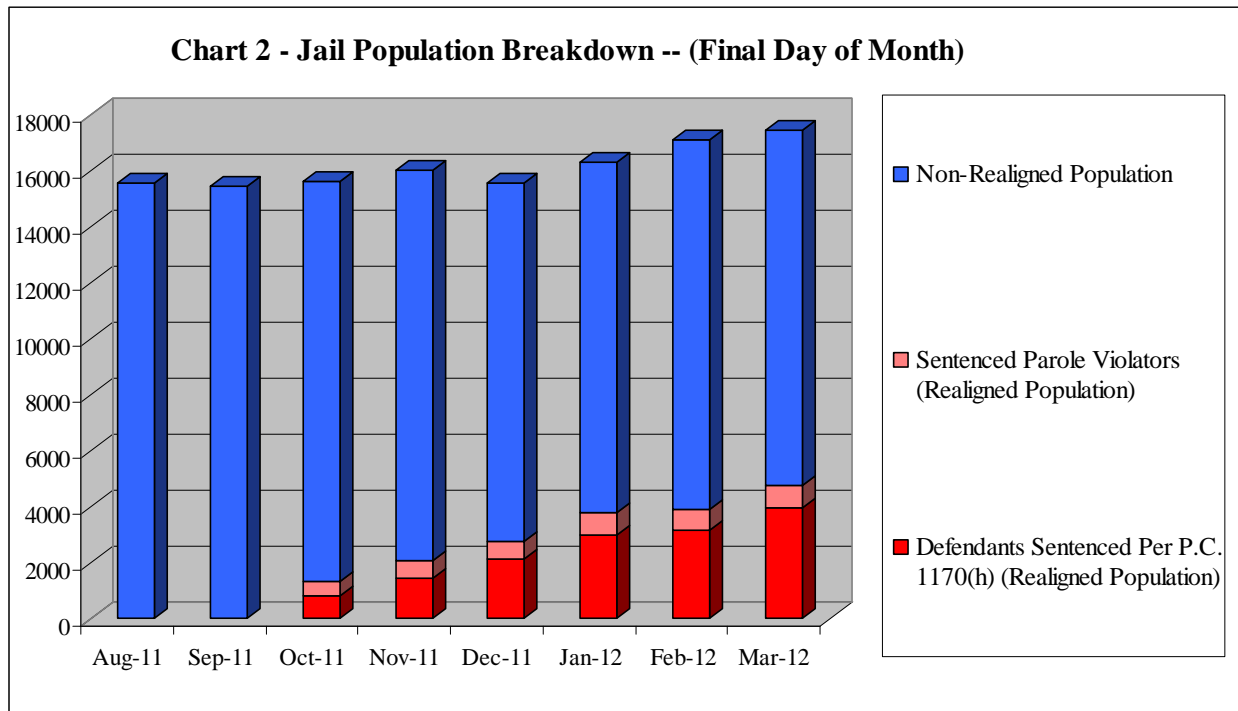
- The Superior Court reports that 258 “split sentences” were given per PC 1170 (h) through the end of March. Upon an inmate’s release from jail, community supervision on split sentences is conducted by the Probation Department. Individuals are processed through the hubs and supervised by AB 109 staff.
- The Sheriff’s Department reports that as of the end of March, 427 N3s had been released from jail after having served their full custody term. Systems and process improvements to better identify those who had received a split sentence are needed to improve the custody to supervision handoff.
- Since the beginning of December, the Sheriff’s Department has not released any sentenced N3 inmates until their full sentence is served. Of those sentenced per PC 1170 (h), 127 inmates had been assigned as station trustees.

PCS and Parole Community Supervision Violations

- The Probation Department increased the use of flash incarceration for PSPs. In February and March, 34 flash incarcerations were imposed by supervision deputies. An additional 164 flash incarcerations were placed on PSPs following their apprehension on a warrant.
- The number of sentenced parole violators, which now also serve custody time in County jail, has steadily increased from 514 on October 31st to 815 on March 31st. On March 31st, sentenced parole violators, who previously served their sanction in prison, accounted for 4.5% of the jail population.

Summary of Custody Impact

On August 31, 2011 – a month prior to realignment’s implementation – the jail population count was 15,598. By the end of March, 3,957 N3s had been sentenced to County jail, and the total population had increased by 1,862 to 17,460. Chart 2 illustrates the realigned and total population growth since one month prior to realignment. The realigned population accounted for 27% of the jail population on March 31st.



(See Attachment III for a more detailed breakdown of population shifts.)

As the realigned and total jail populations continue to grow, the need for custody resources does also. The Sheriff's Department continues to work with the CEO and Fire Department to explore the use of fire camps for eligible N3 offenders. In addition, the Sheriff's Department continues to explore the use of Community Correctional Facilities (CCF) to expand the number of beds available to the system. Information on both options will be brought to your Board at a later date by the CEO, Sheriff's Department and Fire Department.

Attachments

- c: Chief Executive Officer
- Executive Officer of the Board of Supervisors
- County Counsel
- Public Safety Realignment Team
- CCJCC Members
- Civil Grand Jury

**Public Safety Realignment
Summary of Implementation Data**

OCT 2011 NOV 2011 DEC 2011 JAN 2012 FEB 2012 MAR 2012 TOTAL

Postrelease Community Supervision

Pre-Release Packets

1	No. pre-release packets received	3,635	1,216	1,152	1,165	1,128	1,388	9,684
2	No. pre-release packets processed	1,421	1,124	1,643	1,803	1,700	1,727	9,418
3	No. pre-release packets deemed ineligible (of those processed)	114	41	77	89	73	65	459
4	No. PSPs with Special Handling Requirements	10	21	19	14	12	13	89
5	No. of PSPs who are registered sex offenders	20	21	13	22	18	17	111
6	No. address verifications conducted	207	64	10	8	243	438	970
7	No. homeless/transient PSPs (CDCR LEADS 2/12/12)	158	146	144	103	145	134	830

PSP Reporting Population

8	No. PSPs released to County per pre-release packet dates	1,036	1,269	1,152	1,133	1,121	1,008	6,719
9	No. PSPs directly released to County per CDCR LEADS (2/2/12)	1,038	1,205	1,170	1,106	1,039	965	6,523
10	No. PSPs released to Federal custody with ICE detainer	81	86	70	63	64	62	426
11	No. PSPs released to other jurisdiction custody	15	42	29	43	57	71	257
12	No. PSPs transferred to L.A. County from other counties	5	6	12	25	45	84	177
13	No. PSPs transferred from L.A. County to other jurisdictions	9	7	18	36	66	76	212
14	No. PSPs processed at hubs (intake/assessment)	756	969	951	969	899	897	5,441
15	Male	655	853	826	833	791	784	4,742
16	Female	101	116	125	136	108	113	699
17	No. PSPs by risk tier, as assessed at hubs:							
18	Low Risk	30	39	38	15	12	10	144
19	Male				11	7	8	26
20	Female				4	5	2	11
21	Medium Risk	242	310	304	375	386	364	1,981
22	Male				318	336	312	966
23	Female				57	50	52	159
24	High Risk	484	620	609	579	501	523	3,316
25	Male				504	448	464	1,416
26	Female				75	53	59	187
27	No. PSPs who are veterans		11	14	25	23	24	97

PSP "No-Show" and Absconder Population

28	No. "no-show" notifications to Sheriff	46	139	185	157	151	183	861
29	No. Sheriff and LAPD attempts to contact "no-show" PSPs	46	139	185	157	151	183	861
30	No. warrants requested for absconders	0	95	88	68	144	411	806
31	No. warrants issued	0	34	124	83	123	268	632
32	No. absconders apprehended (warrant pick-ups)	0	22	36	59	65	95	277
33	No. of active warrants remaining*	0	12	100	124	182	355	773

* The number of active warrants remaining is cumulative and includes remaining warrants from previous months.

**Public Safety Realignment
Summary of Implementation Data**

OCT 2011 NOV 2011 DEC 2011 JAN 2012 FEB 2012 MAR 2012 TOTAL

PSP Violations/Revocations/New Charges

34	No. of Probable Cause Hearings	0	0	1	3	N/A	N/A	4
35	No. of petitions for revocations (other than warrants)	0	1	1	4	33	59	98
36	No. of Revocation Hearings	0	0	0	2	23	56	81
37	No. PSP arrests/bookings for new offenses	33	95	202	321	410	513	1,574
38	No. PSP arrests/bookings for prior matters	47	70	75	75	75	75	417
39	No. of cases presented to the D.A. for filing				406	594**	851***	851

through 3/2 *through 3/30

Mental Health Treatment Services

40	No. of pre-release packets forwarded to DMH for review	238	236	253	344	284	326	1,681
41	No. of mental health treatment conditions added by Probation	892	241	157	77	151	86	1,604
42	No. DMH determinations -- treatment needed (based on month of release)	320	338	321	313	304	227	1,823
43	No. of PSPs refusing Mental Health Services at HUBs (based on month of release)	51	66	74	39	40	49	319

SEE ATTACHMENT II FOR ADDITIONAL MENTAL HEALTH INFORMATION

Substance Abuse Treatment Services (Based on month of assessment)

44	No. of referrals made to CASCs for Substance Abuse Treatment only assessment	333	383	350	365	384	491	2,306
45	No. of substance abuse treatment conditions added by Probation	1,471	404	295	205	653	441	3,469
46	No. of narcotics testing orders added by Probation	1,922	525	304	189	577	457	3,974
47	No. of PSPs showing at CASCs for assessment	9	56	200	230	275	411	1,181
48	No. of CASC referrals to:	8	33	87	84	151	209	572
49	<i>Residential Treatment Services</i>	1	5	19	19	14	24	82
50	<i>Outpatient Treatment Services</i>	7	28	68	65	137	185	490
51	<i>Sober Living</i>	0	0	0	1	0	1	2
52	No. of PSPs entering:	6	22	30	35	49	79	221
53	<i>Residential Treatment Services</i>	1	4	5	12	10	11	43
54	<i>Outpatient Treatment Services</i>	5	18	25	23	39	68	178
55	<i>Sober Living</i>	0	0	0	1	0	0	1

Referrals for other Services (Based on month of assessment)

56	No. PSPs screened for benefits eligibility by DPSS	646	780	707	755	388	336	3,612
57	No. PSPs who DPSS referred to local DPSS office	489	569	528	562	303	257	2,708
58	No. PSPs enrolled in:	186	229	248	245	139	78	1,125
59	<i>MediCal</i>	2	1	0	0	0	0	3
60	<i>Med/CF</i>	0	1	1	2	0	0	4
61	<i>General Relief</i>	3	16	11	9	4	5	48
62	<i>CalFresh</i>	156	160	174	173	109	60	832
63	<i>CalFresh and General Relief</i>	24	51	62	57	25	13	232
64	<i>CalWorks/CalFresh</i>	1	0	0	4	1	0	6

**Public Safety Realignment
Summary of Implementation Data**

	OCT 2011	NOV 2011	DEC 2011	JAN 2012	FEB 2012	MAR 2012	TOTAL
65 No. PSPs referred to DHS for Healthy Way L.A. screening	291	371	343	390	218	184	1,797

Referrals for Haight-Ashbury

66 PSP's referred					87	295	382
67 <i>Transportation</i>					17	8	25
68 <i>Sober Living</i>					3	5	8
69 <i>Sober Living With Child</i>					0	1	1
70 <i>Transitional Housing</i>					66	125	191
71 <i>Transitional Housing With Child</i>					2	3	5
72 <i>Shelter</i>					1	4	5
73 <i>Job Readiness</i>					23	154	177

PSP Supervision Terminations

74 No. terminations -- 6 months violation-free	N/A	N/A	N/A	N/A	N/A	N/A	0
75 No. terminations -- 12 months violation-free (automatic discharge)	N/A	N/A	N/A	N/A	N/A	N/A	0
76 No. terminations -- 3 year expiration (maximum term)	N/A	N/A	N/A	N/A	N/A	N/A	0
77 No. terminations -- new criminal conviction	0	0	0	0	pending	pending	0
78 No. other terminations (revocation settlement, court order, etc.)	0	0	0	0	pending	pending	0

Custody

Jail Population and Sentencing

79 No. Court sentences pursuant to Penal Code 1170 (h)	1,124	906	760	963	855	863	5,471
80 No. actual defendants sentenced pursuant to Penal Code 1170 (h)	789	679	671	866	663	721	4,389
81 <i>Male inmates sentenced</i>	636	566	546	718	534	584	3,584
82 <i>Female inmates sentenced</i>	153	113	125	148	129	137	805
83 <i>Average length of sentence (months)</i>	24	24	24	24	20	19	
84 <i>Average time left to serve (months)</i>	9	9	9	9	8	8	
85 <i>No. sentenced to "split" sentence</i>	62	41	40	49	36	30	258
86 No. of sentenced N3s currently in jail (at end of the month)	789	1,375	2,087	2,940	3,148	3,957	
87 No. convicted of N3 sentenced to probation							
88 No. N3s released after serving full term (as of March 31, 2012)							427
89 No. N3s currently on alternative custody (as of March 31, 2012)							27
90 <i>No. Station Worker Program (at end of month)</i>	0	70	89	118	124	127	
91 <i>No. Work Release Program</i>	0	0	0	0	0	0	
92 <i>No. Electronic monitoring/GPS</i>	0	35	33	32	31	27	
93 <i>No. Early Release</i>	0	0	0	0	0	0	0

Risk Management and Liability

Realignment Claims/Lawsuits

94 No. claims/lawsuits filed with the County identified as realignment related	0	0	0	0	0	0	0
--	---	---	---	---	---	---	---

**Los Angeles County Department of Mental Health
Post-Release Community Supervision Program**

Data for PSPs Based on Release Month

As of March 31, 2012

	Oct-11	Nov-11	Dec-11	Jan-12	Feb-12	Mar-12
I. DMH Population (Total Clients In Tracking System)	433	414	343	325	314	236
<i>Prescreened, Not Assessed at HUB</i>	94	85	68	80	85	78
<i>Prescreened, Assessed at HUB</i>	147	149	137	139	159	99
<i>Not Prescreened, Assessed at HUB</i>	158	140	99	78	57	59
<i>Not Prescreened, Not assessed at HUB, Receiving Treatment</i>	34	40	39	28	13	0
II. DMH Treatment Determination	433	414	343	325	314	236
<i>No Treatment Needed</i>	87	66	18	10	10	8
<i>Not Prescreened, Left HUB without Evaluation</i>	26	10	4	2	0	1
<i>Treatment Needed</i>	320	338	321	313	304	227
Type of Treatment Required	320	338	321	313	304	227
<i>Co-occurring disorder</i>	161	191	205	195	219	157
<i>Mental health</i>	77	68	53	68	52	46
<i>Substance abuse</i>	45	38	24	22	20	24
<i>Unknown/TBD</i>	37	41	39	28	13	0
III. Client Acceptance of Treatment Referral	320	338	321	313	304	227
<i>Yes</i>	143	152	133	156	153	82
<i>Released to Other Than HUB</i>	0	0	0	0	0	0
<i>No</i>	51	66	74	39	40	49
<i>N/A - Substance Abuse Services</i>	15	17	11	14	15	20
<i>N/A- Not Seen At HUB/Not Released to Other Than HUB</i>	111	103	103	104	96	76
Accepted Treatment by Type Required	143	152	133	156	153	82
<i>Co-occurring disorder</i>	90	116	102	108	122	62
<i>Mental health</i>	53	35	31	46	29	19
<i>Unknown</i>	0	1	0	2	2	1
IV. Accepted Treatment By Level	143	152	133	156	153	82
<i>State Hospital</i>	0	0	0	0	0	0
<i>Institution for Mental Diseases (IMD)</i>	0	0	0	0	0	0
<i>Inpatient++</i>	0	0	1	1	0	1
<i>IMD Step Down</i>	1	2	0	3	0	0
<i>Residential Treatment</i>	0	0	0	0	2	0
<i>Outpatient</i>	142	150	132	152	151	81

	Oct-11	Nov-11	Dec-11	Jan-12	Feb-12	Mar-12
V. Current Status of Clients Who Accepted Treatment	143	152	133	156	153	82
<i>New Clients/Status to Be Determined</i>	28	11	12	11	26	36
<i>Completed Treatment</i>	0	0	1	0	0	0
<i>In Treatment/Compliant with Treatment Plan</i>	56	76	63	92	85	24
<i>In Treatment/Not Complying With Treatment Plan</i>	5	7	11	6	2	1
<i>Left Treatment</i>	4	2	1	0	0	0
<i>Did Not Show for Treatment/Refused Treatment After Referral</i>	36	45	33	40	35	19
<i>In Inpatient Setting Awaiting Transfer to State Hospital/IMD</i>	0	1	1	1	0	1
<i>In Jail Awaiting Transfer to State Hospital/IMD</i>	0	0	0	1	0	0
<i>Incarcerated</i>	13	10	10	5	3	0
<i>Deceased+</i>	1	0	1	0	0	0
<i>Other (Client referred to Other County/Provider)</i>	0	0	0	0	2	1
VI. Current Placement of Clients	123	139	119	127	104	38
<i>Jail++</i>	37	36	27	19	12	9
<i>State Hospital</i>	0	0	0	0	0	0
<i>Institutions for Mental Disease</i>	0	0	2	0	0	0
<i>Inpatient++</i>	1	1	3	1	1	2
<i>IMD Step Down</i>	1	3	0	8	0	0
<i>Residential Treatment</i>	3	3	0	3	2	3
<i>Outpatient Services</i>	81	95	87	96	87	22
<i>Other</i>	0	1	0	0	2	2
VII. PSPs Who Have Accessed Services+++	171	187	169	167	126	38
<i>PSPs with At least One Inpatient Admission</i>	3	16	18	8	4	2
<i>PSPs with At least One Crisis Service (PMRT, UCC, PES)</i>	34	45	38	35	12	3
<i>PSPs with At least One Service in Jail Since Release</i>	81	79	67	55	38	9

+ Deaths due to medical conditions

++ Some Clients placed in inpatient facilities or County Jail pending completion of conservatorship proceedings necessary for State Hospital/IMD Placement

+++ Based on IS data; data entry may lag up to three months after the month of service

Jail Population Breakdown -- Final Day of the Month

	Pre-realignment		Post-realignment							
	Aug-11	Sep-11	Oct-11	Nov-11	Dec-11	Jan-12	Feb-12	Mar-12	+/-	Change
Other (open charges, probation violations, etc.)	10,908	10,560	9,950	10,113	9,412	9,400	10,163	9,660	-1,248	-11%
Sentenced N3	0	0	789	1,468	2,139	3,005	3,148	3,957	3,957	-
Sentenced Parole Violators	0	0	514	598	644	783	737	815	815	-
Pending Parole Violators	1,101	1,321	1,312	1,014	790	747	570	456	-645	-59%
County Sentenced	2,100	2,300	2,089	2,120	1,860	1,712	1,749	1,754	-346	-16%
State Prison Population	1,489	1,282	1,017	747	730	710	771	818	-671	-45%
Total Physical Count (ADP)	15,598	15,463	15,671	16,060	15,575	16,357	17,138	17,460	1,862	12%