



COUNTYWIDE CRIMINAL JUSTICE COORDINATION COMMITTEE



July 1, 2012

TO: Supervisor Zev Yaroslavsky, Chair
Supervisor Gloria Molina
Supervisor Mark Ridley-Thomas
Supervisor Don Knabe
Supervisor Michael Antonovich

FROM: Mark Delgado, Executive Director
Countywide Criminal Justice Coordination Committee

SUBJECT: Public Safety Realignment Implementation Update No. 6 – April 2012 to May 2012 (Related to Item S-1 of the August 30, 2011 Board Agenda)

On August 30, 2011, your Board directed the Countywide Criminal Justice Coordination Committee (CCJCC) to work with impacted departments and provide status reports on public safety realignment implementation in the County. This report and data attachments provide information captured by departments through May 31, 2012.

SUMMARY

- Through the end of May, 8,223 individuals were released on Postrelease Community Supervision (PCS) to Los Angeles County, including 893 in April and 807 in May.
 - The percentage of Postrelease Supervised Persons (PSPs) engaging in rehabilitative treatment services continues to increase each month. For example, 25% of all PSPs referred for substance abuse assessments by the end of December had shown for assessment. By the end of May, 58% of all referred PSPs had shown.
 - Probation requested 564 absconder warrants in the reporting period (236 in April and 328 in May). From October to the end of May, the Court issued 1,228 warrants; 534 remained outstanding by the end of May.
 - The County jail population continues to increase due to the realigned populations housed locally since October. On September 30, 2011, the jail population was 15,463. By May 31, 2012, the population had increased to 18,012. The realigned population accounted for 29% of the population: 4,571 non-violent, non-serious, non-sexual (N3) offenders (25%) and 647 sentenced parole violators (4%).
 - By law, PSPs who have completed 12 months of supervision with no violations resulting in custody time are to be discharged from PCS. Preparations are underway to process these discharges, as potentially hundreds of PSPs will qualify for discharge beginning in October. Coordination with law enforcement and treatment providers will be critical to ensure that they have current information on individuals subject to PCS terms and conditions.
-

POSTRELEASE COMMUNITY SUPERVISION (PCS)

Pre-release Packets and Screening

Probation received 974 pre-release packets in April and 868 in May. From October to May, the department processed 11,418 of the 11,526 total pre-release packets received.

Between October 1, 2011 and May 31, 2012, there were 8,223 PSPs released to the County on PCS according to the California Department of Corrections and Rehabilitation (CDCR) Law Enforcement Automated Data System (LEADS). As indicated in Table 1, the number of PSPs released in the first eight months continues to trend down, consistent with initial projections.

Table 1 – PSP Release Numbers

	OCT	NOV	DEC	JAN	FEB	MAR	APR	MAY	TOTAL
PSPs released	1,038	1,205	1,170	1,106	1,039	965	893	807	8,223

Hub Intake/Assessment

In April and May, 780 and 794 PSPs reported to the hubs, respectively, for intake and assessment.

Departments highlight the following updates/developments related to hub intake processes:

- PSPs continue to assess at higher levels of risk to recidivate than Probation anticipated: 61% of PSPs have assessed as high risk, 37% as medium risk, and 2% as low risk.
- Probation's Antelope Valley Adult Area Office was modified to serve as a PCS hub. Probation staff began PSP intake/assessment operations the week of May 21. The Department of Mental Health (DMH) and Department of Public and Social Services (DPSS) are in the process of identifying staff for co-location at the hub.
- Co-located DMH staff at the hubs assessed 2,046 individuals for mental health needs (29% of the reporting population) by the end of May.
- From October to May, DPSS screened 4,439 PSPs for benefits eligibility and enrolled 1,422 (32%) in benefits programs, primarily CalFresh and General Relief.

DPSS will expand its role at the hubs effective July 16. DPSS eligibility workers have been cross trained and designated to facilitate enrollment for qualified PSPs in Healthy Way L.A., the County's Low Income Health Plan. Enrollment of eligible PSPs in HWLA will maximize Federal match dollars to support treatment services.

- Working with the Department of Public Health – Substance Abuse Prevention and Control (DPH-SAPC), Probation continues to work toward the co-location of staff from Community Assessment Service Centers (CASCs) at the hubs to conduct substance abuse assessments. Probation has designated space at the Lynwood, Day Reporting Center, and Antelope Valley hubs for CASC staff, and co-location is pending.

Provision of Treatment Services to Individuals

The Probation Department submitted a report to your Board dated June 11, 2012, detailing strategies and efforts implemented to increase the level of rehabilitative services provided to PSPs. Strategies highlighted in that report include:

- Adding mental health/substance abuse treatment as a condition of supervision
- Modification of the Treatment Court Probation Exchange (TCPX) system to track treatment referrals and PSP participation in a real time fashion
- Utilization of Haight-Ashbury contract for services
- Identification of additional service providers through the Request for Proposals process to expand employment and housing services available

While overall PSP treatment participation rates remain low, improvements in treatment engagement have continued each month. Table 2 illustrates that show rates for PSPs referred to the CASCs for substance abuse assessments have increased each month.

Table 2 – Referrals for Substance Abuse Assessment and Show Rates (Cumulative)

	OCT	NOV	DEC	JAN	FEB	MAR	APR	MAY
Referrals to CASCs for Substance Abuse Assessment	333	716	1,066	1,431	1,815	2,306	2,790	3,296
Number reporting to CASCs	9 3%	65 9%	265 25%	495 35%	770 42%	1,181 51%	1,527 55%	1,911 58%

Table 3 shows a slight improvement in recent months in the percentage of those assessed as needing treatment who actually engage in treatment.

Table 3 – Substance Abuse Treatment Referrals and Entrance Rates (Cumulative)

	OCT	NOV	DEC	JAN	FEB	MAR	APR	MAY
Number of CASC referrals for treatment	8	41	128	212	363	572	713	883
Number PSPs entering treatment	6 75%	28 68%	58 45%	93 44%	142 39%	221 39%	287 40%	369 42%

Table 4 illustrates that the percentage of PSPs refusing mental health services following an assessment that determined need declined significantly in April and May.

*Table 4 – Mental Health Treatment Determinations and PSP Refusals (By Month of Release)**

	OCT	NOV	DEC	JAN	FEB	MAR	APR	MAY
DMH assessments at hubs – treatment needed	341	375	351	340	327	301	275	220
Number refusing mental health treatment at hubs	55 16%	66 18%	83 24%	47 14%	50 15%	57 19%	27 10%	21 10%

* Data are organized according to month of release and are not cumulative.

Finally, Probation’s referrals to Haight-Ashbury for other supportive services continue to increase. Through the month of May, Probation made 2,083 total referrals to service for 2,113 PSPs. The most common referrals were for job readiness/job placement assistance (1,480) and transitional housing (547).

Supervision and Enforcement

Probation, the Sheriff’s Department, and the District Attorney’s Office (D.A.) continue to track data on warrants, arrests, prosecutions, and other PCS enforcement efforts. Table 5 summarizes various absconder enforcement actions taken from realignment’s October 1st start date through the end of May.

Table 5 – PCS Absconder Enforcement Efforts

	OCT	NOV	DEC	JAN	FEB	MAR	APR	MAY	TOT
Absconder warrants requested	0	95	88	68	144	411	236	328	1,370
Absconder warrants issued	0	34	124	83	123	268	301	295	1,228
Absconders apprehended	0	22	36	59	65	95	201	213	691
Active warrants remaining (month end)	0	12	100	124	182	355	452	534	-

The Sheriff’s Department also tracks arrests of PSPs countywide by matching bookings against the LEADS database of released PSPs. Table 6 provides arrest and booking data through May and new case data captured by the District Attorney’s Office.

Table 6 – Countywide Arrests of PSPs and New Cases

	OCT	NOV	DEC	JAN	FEB	MAR	APR	MAY	TOT
Bookings for new offenses	33	95	202	321	401	488	462	640	2,642
Bookings for prior matters	47	70	75	75	75	75	173	62	652
Bookings for flash incarceration [†]					9	25	53	67	154
Total Bookings	80	165	277	396	485	588	688	769	3,448
New cases presented to the D.A. for filing				406*	188	257	329	461	1,641

[†] This row includes the number of flash incarcerations imposed by supervision deputies as a sanction. Flash incarcerations that resulted following apprehension on a warrant are included in new offense data.

* Number is cumulative from October to January

As Table 6 indicates, 652 of the recorded arrests were not actually for new offenses, but for direct transports to County jail from CDCR in advance of a court appearance on a prior matter,

such as warrants or previous charges. Another 154 bookings resulted from flash incarceration, leaving 2,642 bookings for new offenses through the end of May.

Intermediate Sanctions and Revocations

Violations and non-compliance with PCS terms of supervision can result in a range of sanctions, including revocation through the Court process. The maximum sanction for a PCS revocation is 180 days in County jail, minus the state-mandated credits (90 days).

Intermediate Sanctions

Prior to petitioning the Court for revocation, Probation can utilize a range of intermediate sanctions to respond to issues of non-compliance, including: verbal reprimand, increase in reporting requirements, additional conditions of supervision, Probation Adult Alternative Work Service (PAAWS), GPS and/or electronic monitoring, and flash incarceration for up to 10 days.

Following your Board’s April 3rd request, Probation implemented a process to track the use of intermediate sanctions. These sanctions have been utilized since the program’s inception, but data on their use is only available beginning in April.

Table 7 – Intermediate Sanctions Imposed by Probation

	FEB	MAR	APR	MAY	TOT
No. of verbal warnings			183	248	431
Increase reporting (to DPO) requirements			25	22	47
Additional conditions of supervision			9	11	20
Referrals for services			9	3	12
PAAWS (Cal Trans)			8	21	29
Referral to CASC for substance abuse assessment			73	63	136
Flash incarceration (Supervision Only)	9	25	53	67	154
Flash incarceration (Warrants)	65	99	176	209	549
Electronic monitoring			2	2	4
GPS			0	61	61

Revocations and Court Hearings

Revocations have increased significantly in recent months. In April and May, 276 petitions for revocation were submitted to the court. This represents 74% of all petitions for revocation submitted since October (374).

Data on revocation outcomes was not available for this report but will be captured and provided in future reports.

A significant enhancement to the revocation/court hearing process during this reporting period was the co-location of a DMH clinical psychologist at the revocation court. PSPs facing revocation or brought to the court following apprehension on a warrant can now be immediately assessed and referred to mental health services, as needs present.

DMH's co-location at the court began May 3. By the end of the month, DMH had assessed and referred to services 44 PSPs – most having mental health or co-occurring disorders and many having failed to previously report to the hubs for their initial intake and assessment.

Other Issues

Two additional issues should be highlighted for this reporting period: PCS terminations/discharges and law enforcement compliance checks at treatment provider sites.

Terminations/Discharges

PCS terminations/discharges will increasingly impact PCS caseload numbers moving forward. To date, terminations have most often been the result of new criminal convictions and sentences to prison, which obviate the need for continued PCS supervision. There were 117 such PCS terminations by the end of May and 21 terminations for other causes.

In the coming months, additional terminations will more significantly impact PCS caseload numbers. By law, PSPs who have completed 12 months of supervision with no violations resulting in custody time are to be discharged from PCS within 30 days. Potentially hundreds of PSPs each month will begin to qualify in October, contingent on their PCS performance.

Probation is preparing for such discharges by identifying cases which may be eligible and identifying resources to process the discharges within the time period required by law.

Coordination with law enforcement and treatment providers will be critical to ensure that all justice and treatment partners have accurate and real time information on which PSPs released from prison remain subject to PCS terms and conditions and which PSPs have been discharged.

Law Enforcement Compliance Checks at Treatment Facility Sites

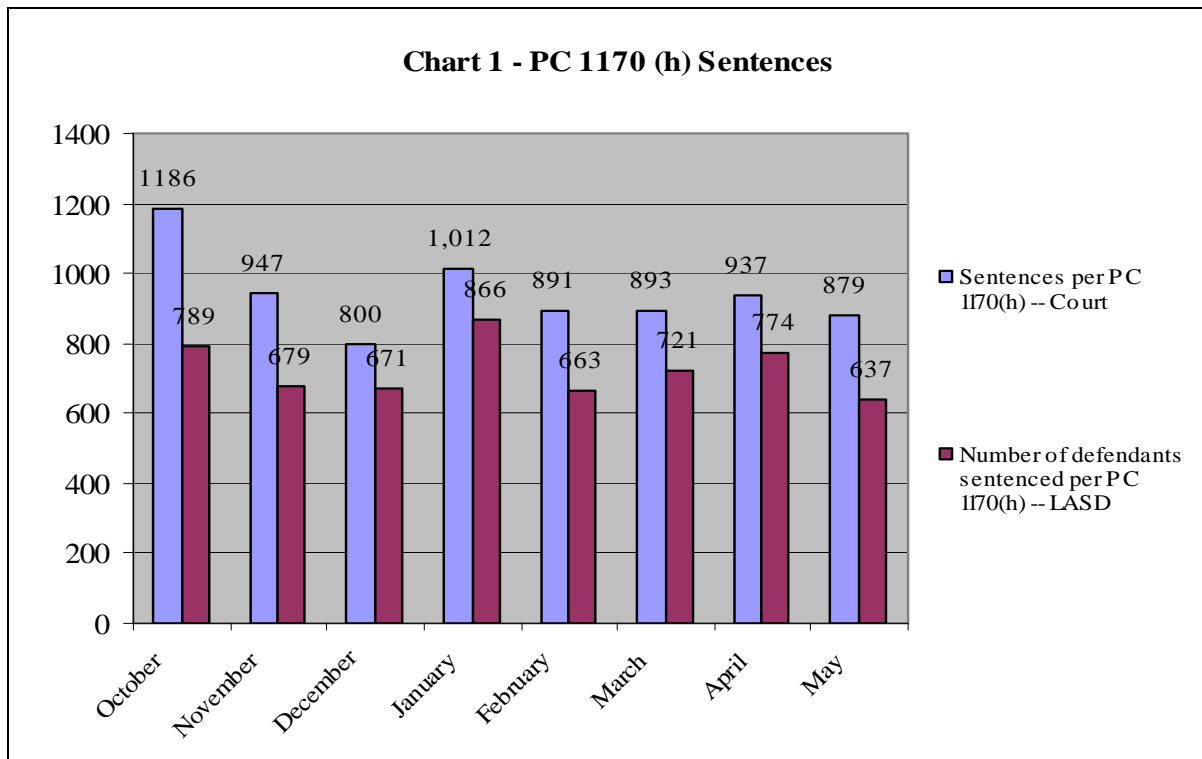
Treatment providers reported that law enforcement compliance checks of PSPs in treatment programs present potential conflicts with Federal Regulation 42 CFR, Part 2. All PSPs are subject to search and seizure by law enforcement. However, licensed substance abuse treatment providers are governed by Federal regulations that prohibit the sharing of information on clients in treatment at their sites – including whether or not they are present.

A Public Safety Realignment Team work group comprised of representatives from law enforcement, treatment providers, Probation, County Counsel, DMH, and DPH-SAPC was convened to address this issue. The work group developed a waiver form for PSPs to sign that authorizes treatment facility staff to inform law enforcement and Probation staff whether they are receiving services or residing at the particular facility. The waiver will assist compliance checks on identified PSPs while supporting providers' compliance with Federal regulations.

CUSTODY

Sentences per Penal Code 1170 (h)

Realignment legislation enacted Penal Code 1170 (h), which specifies that certain non-violent, non-serious, non-sexual felony offenders (N3) are no longer eligible for state prison sentences. Chart 1 provides data on how many PC 1170 (h) sentences were given and to how many defendants.



Agencies highlight the following facts related to PC 1170 (h) sentences:

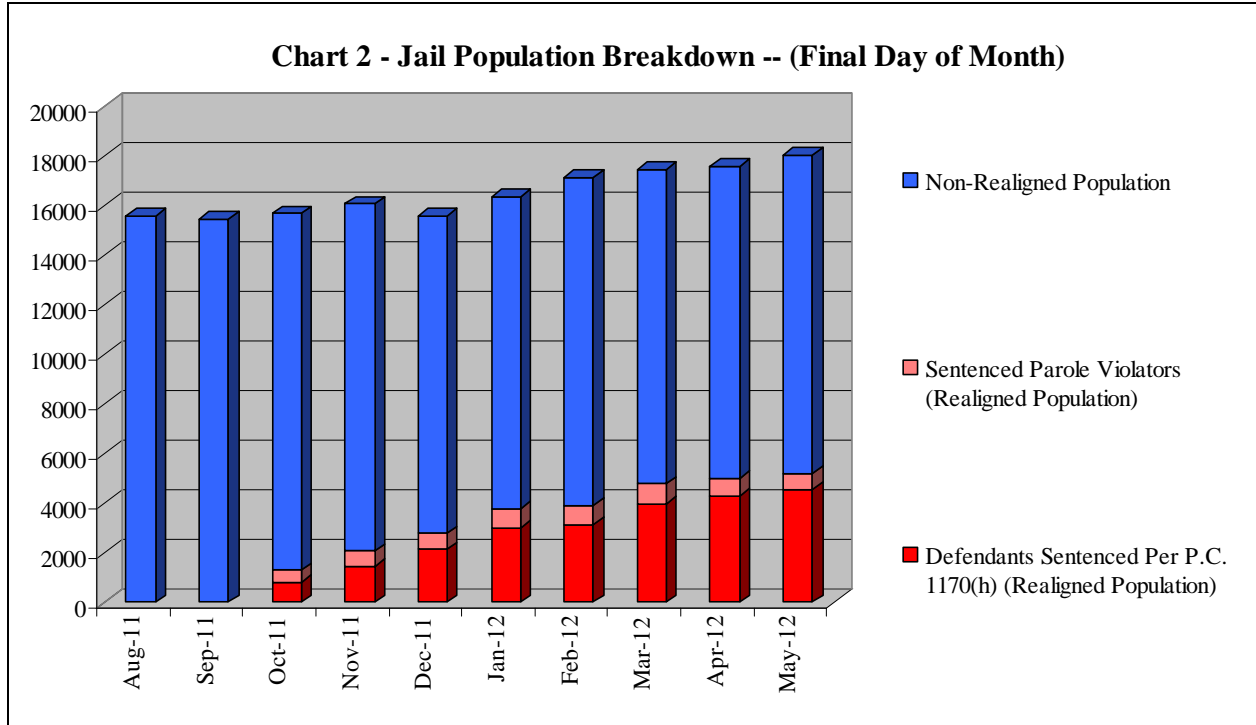
- The Superior Court reports that 328 “split sentences” were given per PC 1170 (h) through the end of May. Upon an inmate’s release from jail, community supervision on split sentences is conducted by the Probation Department. Individuals are processed through the hubs and supervised by AB 109 staff.
- The Sheriff’s Department reports that as of the end of May, 1,041 N3s had been released from jail after having served their full custody term. (The Department is not releasing sentenced N3 inmates until their full sentence is served.) Systems and process improvements to better identify those who had received a split sentence are still needed to improve the custody to supervision handoff.
- At the end of May, 141 inmates sentenced per PC 1170 (h) were on station trustee assignment.

PCS and Parole Community Supervision Violations

- The Probation Department increased the use of flash incarceration for PSPs. In April and May, 120 flash incarcerations were imposed by supervision deputies. An additional 385 flash incarcerations were placed on PSPs following their apprehension on a warrant.
- The number of sentenced parole violators, which now also serve custody time in County jail, has increased from 514 on October 31st to 647 on May 31st. On May 31st, sentenced parole violators, who previously served their sanction in prison, accounted for 3.6% of the jail population.

Summary of Custody Impact

On August 31, 2011 – a month prior to realignment’s implementation – the jail population count was 15,598. By the end of May, the total population had increased by 2,414 to 18,012 and included 4,571 N3s sentenced to County jail. Chart 2 illustrates this growth in the realigned and total jail population. Attachment III provides more detailed information on the population growth and shifts since realignment.



To accommodate the jail population growth, the Sheriff’s Department continues to work with the CEO and other stakeholders to explore strategies for maximizing custody options available, such as the use of fire camps, Community Correctional Facilities, and community based alternatives to custody. Such options will be brought to your Board at a later date.

Attachments

- c: Chief Executive Officer
- Executive Officer of the Board of Supervisors
- County Counsel
- Public Safety Realignment Team
- CCJCC Members
- Civil Grand Jury

**Public Safety Realignment
Summary of Implementation Data**

OCT 2011 NOV 2011 DEC 2011 JAN 2012 FEB 2012 MAR 2012 APR 2012 MAY 2012 TOTAL

Postrelease Community Supervision

Pre-Release Packets

1	No. pre-release packets received	3,635	1,216	1,152	1,165	1,128	1,388	974	868	11,526
2	No. pre-release packets processed	1,421	1,124	1,643	1,803	1,700	1,727	1,120	880	11,418
3	No. pre-release packets deemed ineligible (of those processed)	114	41	77	89	73	65	43	39	541
4	No. PSPs with Special Handling Requirements	10	21	19	14	12	13	8	14	111
5	No. of PSPs who are registered sex offenders	20	21	13	22	18	17	24	33	168
6	No. address verifications conducted	207	64	10	8	243	438	216	107	1,293
7	No. homeless/transient PSPs per CDCR	158	146	144	103	145	134	116	114	1,060

PSP Reporting Population

8	No. PSPs released to County per pre-release packet dates	1,036	1,269	1,152	1,133	1,121	1,008	955	856	8,530
9	No. PSPs directly released to County per CDCR LEADS	1,038	1,205	1,170	1,106	1,039	965	893	807	8,223
10	No. PSPs released to Federal custody with ICE detainer	81	86	70	63	64	62	71	56	553
11	No. of PSPs released to the community by ICE							2	0	2
12	No. PSPs released to other jurisdiction custody	15	42	29	43	57	71	35	58	350
13	No. PSPs transferred to L.A. County from other counties	5	6	12	25	45	84	66	77	320
14	No. PSPs transferred from L.A. County to other jurisdictions	9	7	18	36	66	76	80	52	344
15	No. PSPs processed at hubs (intake/assessment)	756	969	951	969	899	897	780	794	7,015
16	Male	655	853	826	833	791	784	667	713	6,122
17	Female	101	116	125	136	108	113	113	81	893
18	No. PSPs by risk tier, as assessed at hubs:									
19	Low Risk	30	39	38	15	12	10	9	10	163
20	Male				11	7	8	8	7	41
21	Female				4	5	2	1	3	15
22	Medium Risk	242	310	304	375	386	364	305	301	2,587
23	Male				318	336	312	255	262	1,483
24	Female				57	50	52	50	39	248
25	High Risk	484	620	609	579	501	523	466	483	4,265
26	Male				504	448	464	404	444	2,264
27	Female				75	53	59	62	39	288
28	No. PSPs who are veterans		11	14	25	23	24	17	33	147

PSP "No-Show" and Absconder Population

29	No. "no-show" notifications to Sheriff	46	139	185	157	151	183	135	122	1,118
30	No. Sheriff and LAPD attempts to contact "no-show" PSPs	46	139	185	157	151	183	35	57	953
31	No. warrants requested for absconders	0	95	88	68	144	411	236	328	1,370
32	No. warrants issued	0	34	124	83	123	268	301	295	1,228
33	No. absconders apprehended (warrant pick-ups)	0	22	36	59	65	95	201	213	691
34	No. of active warrants remaining*	0	12	100	124	182	355	452	534	

* The number of active warrants remaining is cumulative and includes remaining warrants from previous months.

**Public Safety Realignment
Summary of Implementation Data**

OCT 2011 NOV 2011 DEC 2011 JAN 2012 FEB 2012 MAR 2012 APR 2012 MAY 2012 TOTAL

PSP Violations/Revocations/New Charges

35	No. of Probable Cause Hearings	0	0	1	3	N/A	N/A	N/A	N/A	4
36	No. of petitions for revocations (other than warrants)	0	1	1	4	33	59	139	137	374
37	No. of PSP arrests / bookings	80	165	277	396	485	588	688	769	3,448
38	<i>No. arrests/bookings for new offenses</i>	33	95	202	321	401	488	462	640	2,642
39	<i>No. arrests/bookings for prior matters</i>	47	70	75	75	75	75	173	62	652
40	<i>No. bookings for flash incarceration (by supervision deputies)</i>					9	25	53	67	154
41	No. of cases presented to the D.A. for filing **				406	594	851	1,180	1,641	

** Data are cumulative and presented by the end of the month on the completion of the week closest to the end of the respective month.

Sanctions

42	No. of verbal warnings							183	248	431
43	Increase reporting (to DPO) requirements							25	22	47
44	Additional conditions of supervision							9	11	20
45	Referrals for services							9	3	12
46	PAAWS (Cal Trans)							8	21	29
47	Referral to CASC							73	63	136
48	Flash incarceration (AB 109 Supervision Only)					9	25	53	67	154
49	Flash incarceration (Warrants)					65	99	176	209	549
50	Electronic monitoring							2	2	4
51	GPS							0	61	61

Mental Health Treatment Services

52	No. of pre-release packets forwarded to DMH for review	238	236	253	344	284	326	170	197	2,048
53	No. of mental health treatment conditions added by Probation***	897	278	216	165	203	235	172	87	2,253
54	No. DMH determinations -- treatment needed***	341	374	350	337	325	300	275	218	2,520
55	No. of PSPs refusing Mental Health Services at HUBs***	55	66	83	46	50	57	26	21	404

*** Data are reported according to the PSP month of release.

SEE ATTACHMENT II FOR ADDITIONAL MENTAL HEALTH INFORMATION

Substance Abuse Treatment Services (Based on month of assessment)

56	No. of referrals made to CASCs for Substance Abuse Treatment only assessment	333	383	350	365	384	491	484	506	3,296
57	No. of substance abuse treatment conditions added by Probation***	1,510	483	498	551	711	741	609	412	5,515
58	No. of narcotics testing orders added by Probation***	1,962	605	484	496	640	763	667	447	6,064
59	No. of PSPs showing at CASCs for assessment	9	56	200	230	275	411	346	384	1,911
60	<i>No. of CASC referrals to:</i>	8	33	87	84	151	209	141	170	883
61	<i>Residential Treatment Services</i>	1	5	19	19	14	24	22	36	140
62	<i>Outpatient Treatment Services</i>	7	28	68	65	137	185	115	129	734
63	<i>Sober Living</i>	0	0	0	1	0	1	4	5	11
64	No. of PSPs entering:	6	22	30	35	49	79	66	82	369
65	<i>Residential Treatment Services</i>	1	4	5	12	10	11	5	27	75
66	<i>Outpatient Treatment Services</i>	5	18	25	23	39	68	61	55	294
67	<i>Sober Living</i>	0	0	0	1	0	0	0	0	1

*** Data are reported according to the PSP month of release.

Los Angeles County Department of Mental Health
 Post-Release Community Supervision Program
 Data for PSPs Based on Release Month
 As of May 31, 2012

	Oct-11	Nov-11	Dec-11	Jan-12	Feb-12	Mar-12	Apr-12	May-12
I. DMH Population (Total Clients In Tracking System)	483	480	407	388	357	315	283	228
Prescreened, Not Assessed at HUB	78	78	50	52	60	48	48	44
Prescreened, Assessed at HUB	164	155	155	164	181	149	156	3
Not Prescreened, Assessed at HUB	191	182	140	127	86	87	56	50
Not Prescreened, Not assessed at HUB, Receiving Treatment	50	65	62	45	30	31	23	1
II. DMH Treatment Determination	483	480	407	388	357	315	283	228
No Treatment Needed	86	66	20	10	10	12	8	8
Not Prescreened, Left HUB without Evaluation	56	39	36	38	20	2	0	0
Treatment Needed	341	375	351	340	327	301	275	220
Type of Treatment Required	341	375	351	340	327	301	275	220
Co-occurring disorder	188	236	238	225	234	217	223	177
Mental health	73	65	56	67	59	55	37	22
Substance abuse	45	38	26	23	22	28	15	21
Unknown/TBD	35	36	31	25	12	1	0	0
III. Client Acceptance of Treatment Referral	341	375	351	340	327	301	275	220
Yes	148	173	150	178	170	139	151	117
Released to Other Than HUB	0	0	0	0	0	0	0	0
No	55	66	83	47	50	57	27	21
N/A - Substance Abuse Services	45	38	26	23	22	28	15	21
N/A- Not Seen At HUB/Not Released to Other Than HUB	93	98	92	92	85	77	82	61
Accepted Treatment by Type Required	148	173	150	178	170	139	151	117
Co-occurring disorder	98	136	113	130	133	108	130	103
Mental health	50	35	34	47	37	30	21	14
Unknown	0	2	3	1	0	1	0	0

	Oct-11	Nov-11	Dec-11	Jan-12	Feb-12	Mar-12	Apr-12	May-12
IV. Accepted Treatment By Level	148	174	150	179	168	140	151	117
State Hospital	0	0	0	0	0	0	0	0
Institution for Mental Diseases (IMD)	0	2	2	0	0	1	0	0
Inpatient++	0	1	0	3	0	1	0	1
IMD Step Down	1	4	1	3	2	2	0	2
Residential Treatment	0	0	1	0	2	0	0	0
Outpatient	147	167	146	173	164	136	151	114
V. Current Status of Clients Who Accepted Treatment	147	171	142	174	165	138	150	116
New Client/Status To Be Determined	0	3	0	2	4	7	21	8
Completed Treatment	0	0	0	0	0	0	0	0
In Treatment/Compliant with Treatment Plan	53	80	50	73	86	61	55	29
In Treatment/Not Complying With Treatment Plan	5	6	18	23	10	5	7	0
Left Treatment	5	9	6	7	3	1	0	0
Did Not Show for Treatment/Refused Treatment After Referral	40	50	36	46	34	37	40	16
In Inpatient Setting Awaiting Transfer to State Hospital/IMD	0	1	1	1	0	1	0	0
In Jail Awaiting Transfer to State Hospital/IMD	0	0	0	0	0	0	0	0
Incarcerated	16	11	10	7	5	2	0	0
Deceased+	1	0	1	0	0	0	0	0
Other (Client referred to Other County/Provider)	27	11	20	15	23	24	27	63
VI. Current Placement of Clients	149	173	150	179	173	140	153	116
Jail++	15	11	14	7	5	2	0	0
State Hospital	0	0	0	0	0	0	0	0
Institutions for Mental Disease	0	2	2	0	0	1	0	0
Inpatient++	2	0	2	1	0	1	0	0
IMD Step Down	1	4	1	5	5	1	2	2
Residential Treatment	3	4	2	3	4	6	3	2
Outpatient Services	58	88	70	100	96	60	60	25
Other	70	64	59	63	63	69	88	87
VII. PSPs Who Have Accessed Services+++	233	252	220	213	195	145	122	76
PSPs with At least One Inpatient Admission	4	19	21	10	6	7	2	0
PSPs with At least One Crisis Service (PMRT, UCC, PES)	34	45	38	35	13	12	8	6
PSPs with At least One Service in Jail Since Release	134	128	116	101	85	67	61	34

+ Deaths due to medical conditions

++ Some Clients placed in inpatient facilities or County Jail pending completion of conservatorship proceedings necessary for State Hospital/IMD Placement

+++ Based on IS data; data entry may lag up to three months after the month of service

Jail Population Breakdown -- Final Day of the Month

	Pre-realignment		Post-realignment									
	Aug-11	Sep-11	Oct-11	Nov-11	Dec-11	Jan-12	Feb-12	Mar-12	Apr-12	May-12	+/-	Change
Other (open charges, probation violations, etc.)	10,908	10,560	9,950	10,113	9,412	9,400	10,163	9,660	9,746	9,658	-1,250	-11%
Sentenced N3	0	0	789	1,468	2,139	3,005	3,148	3,957	4,314	4,571	4,571	-
Sentenced Parole Violators	0	0	514	598	644	783	737	815	691	647	647	-
Pending Parole Violators	1,101	1,321	1,312	1,014	790	747	570	456	370	381	-720	-65%
County Sentenced	2,100	2,300	2,089	2,120	1,860	1,712	1,749	1,754	1,565	1,872	-228	-11%
State Prison Population	1,489	1,282	1,017	747	730	710	771	818	887	883	-606	-41%
Total Physical Count (ADP)	15,598	15,463	15,671	16,060	15,575	16,357	17,138	17,460	17,573	18,012	2,414	15%