

# Los Angeles County Probation Department

AB109 Year Three Report - January 27, 2015

Jerry E. Powers, Chief Probation Officer





# AB 109 Population

October 2011 through September 30, 2014

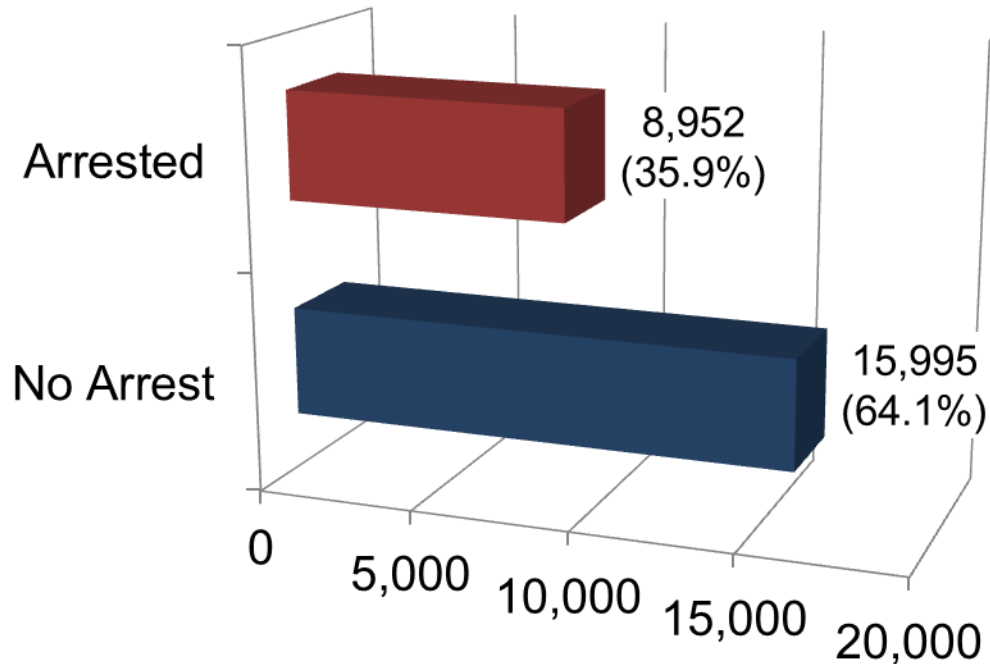
Type	Population			
	Year One	Year Two	Year Three	Total
Total Cases Accepted	11,513	6,865	6,569	24,947
Total Cases Closed	834	6,732	5,993	13,559
Outstanding Warrants at End of Year*	870	1,838	2,039	2,039
Deported	700	317	204	1,221
<b>Active Cases at End of Year</b>	<b>9,109</b>	<b>7,957</b>	<b>8,128</b>	<b>8,128</b>

\* Does not include Warrants issued for deported PSPs.

*All data in the table above was compiled using Probation Systems*



# Arrests



24,947 total PRCS cases accepted as of September 30, 2014; of which 8,952 (35.9%) have at least one arrest for misdemeanor or felony. Does not include incarcerations for Flash or technical violations.



# Arrest and Conviction Rates

October 2011 through September 30, 2014

- 47% - Overall rate of those who returned to custody as a result of a Flash Incarceration, New Arrest for misdemeanor/felony, or Revocation.
- 40% - Overall rate of those arrested and booked for misdemeanor/felony or Revocation. Does not include Flash Incarceration.
- 29% - Overall rate of conviction by Los Angeles County District Attorney (D.A.).



# New AB 109 Office Locations

## **Offices Opened in Year Three:**

- Antelope Valley Regional Office & HUB
- South Bay Regional Office
- South Los Angeles Regional Office & HUB
- West Los Angeles Regional Office
- San Fernando Valley Regional Office

## **Offices Pending Identification:**

- West San Gabriel
- East San Gabriel



# Staffing Update

## as of January 1, 2015

DPO II Items	363
<hr/>	
Filled	288
<hr/>	
Vacant	75
Contingent Offers Made	11
Vacancies Pending Recruitment	64



# Caseload Update as of September 30, 2014

- Average caseload size for AB 109 regular supervision is 42:1
- Average caseload size for AB 109 Specialized Caseload is 21:1

<b>Caseload Type</b>	<b>Target</b>	<b>Oct. 1, 2014</b>
Very High	1:20	1:14
High	1:50	1:36
Medium/Low	1:75	1:40
GPS / Sex Offender	1:20	1:17
Special Victim	1:20	1:25
Homeless	1:20	1:18
Co-occurring (SUD/MH)	1:20	1:25



# Accomplishments

- Co-location of 38 DPOs with Local Law Enforcement and Service Providers.
- Development of Specialized Caseloads to address supervised persons with higher levels of risk.
- Expansion of services to medically fragile supervised persons.
- Establishment of housing resources for registered sex offenders.
- Development and implementation of training for specialized caseloads, field officer safety, and general supervision of the AB 109 population.
- Increased number of community contacts made by supervision DPOs.





# Year Four Objectives

- Expand and increase the number of DPOs co-located with Local Law Enforcement and Service Providers
- Implementation of Cognitive Behavioral Interventions
- Participation in evaluation study of AB 109 services
- Expand services to victims through the collection of restitution
- Expand Homeless Pilot in Skid-Row to other areas of the County with high numbers of homeless supervised persons

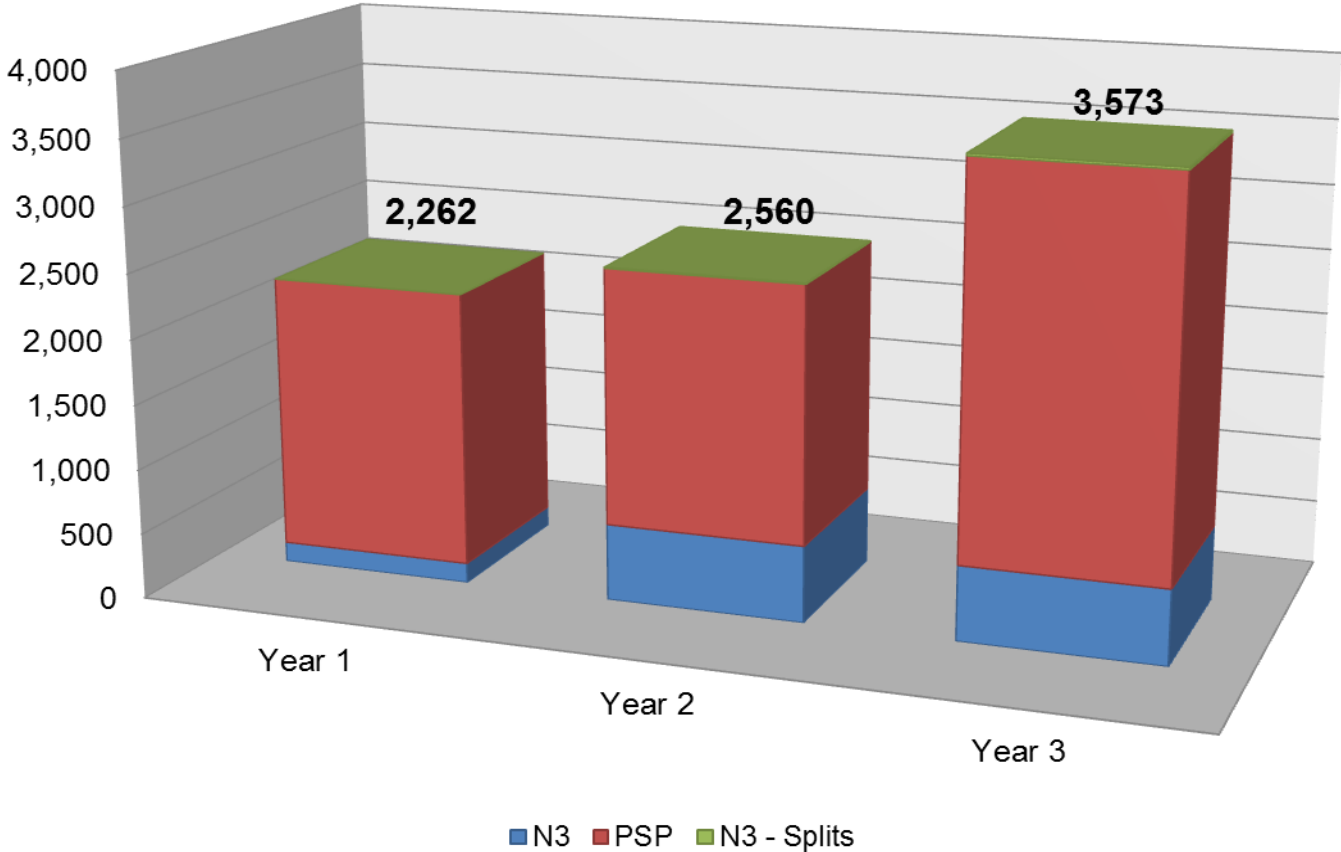
# County of Los Angeles Department of Mental Health



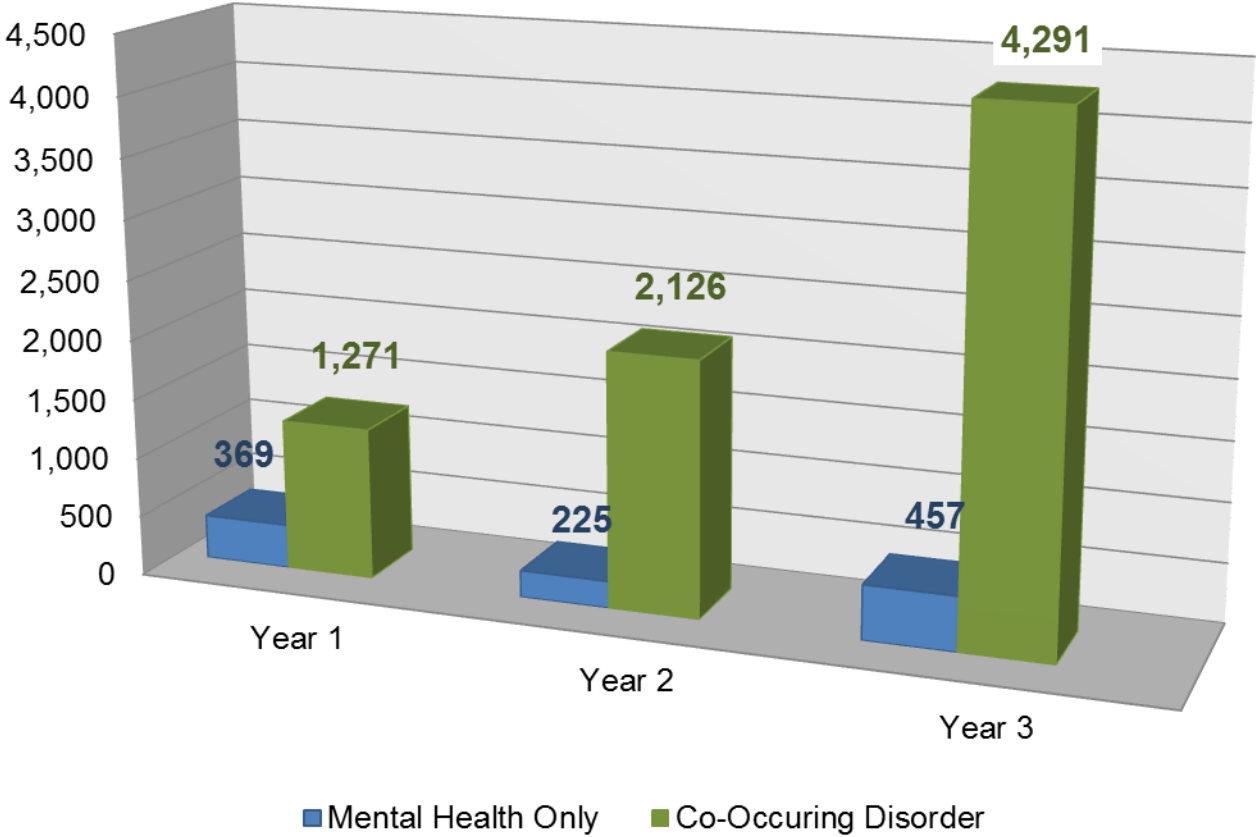
## Year 3 - AB109 Performance Measures

- Expanded Jail Mental Health Services, Mental Health Court Program, and Countywide Resource Management staff to:
  - Provide identification, assessment, engagement and linkage services at the Probation HUBs, Jails and Revocation Courts
  - Provide treatment for incarcerated AB 109 inmates with mental illness and/or co-occurring disorders
  - Increase percentage of AB 109 clients linked to community services and treatment retention; and reduce recidivism
- Increased specialized intensive residential programs by 100%
- Implemented specialized training curriculum for AB 109 providers to enhance knowledge and practices related to engagement and treatment of persons with mental health and co-occurring disorders with criminal justice backgrounds
- Increased jail in-reach capacity to AB 109 funded providers to actively engage inmates prior to release in continuing MH and COD treatment programs in the community
- Expanded Co-Occurring Integrated Care Network (COIN) Pilot Project from a capacity of ten (10) to twenty (20) beds at any given time

# Assessed by DMH

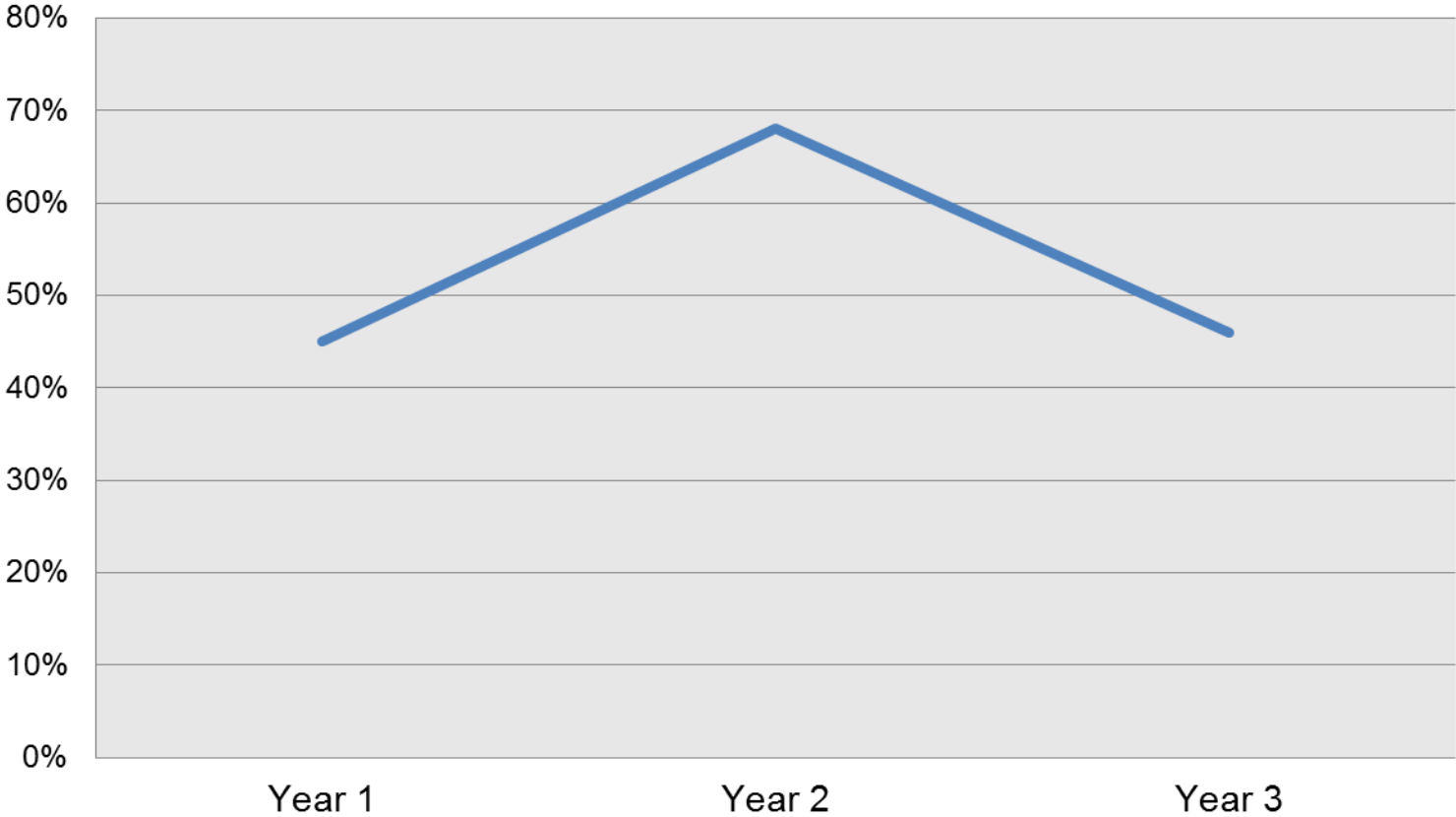


# Treatment Needs

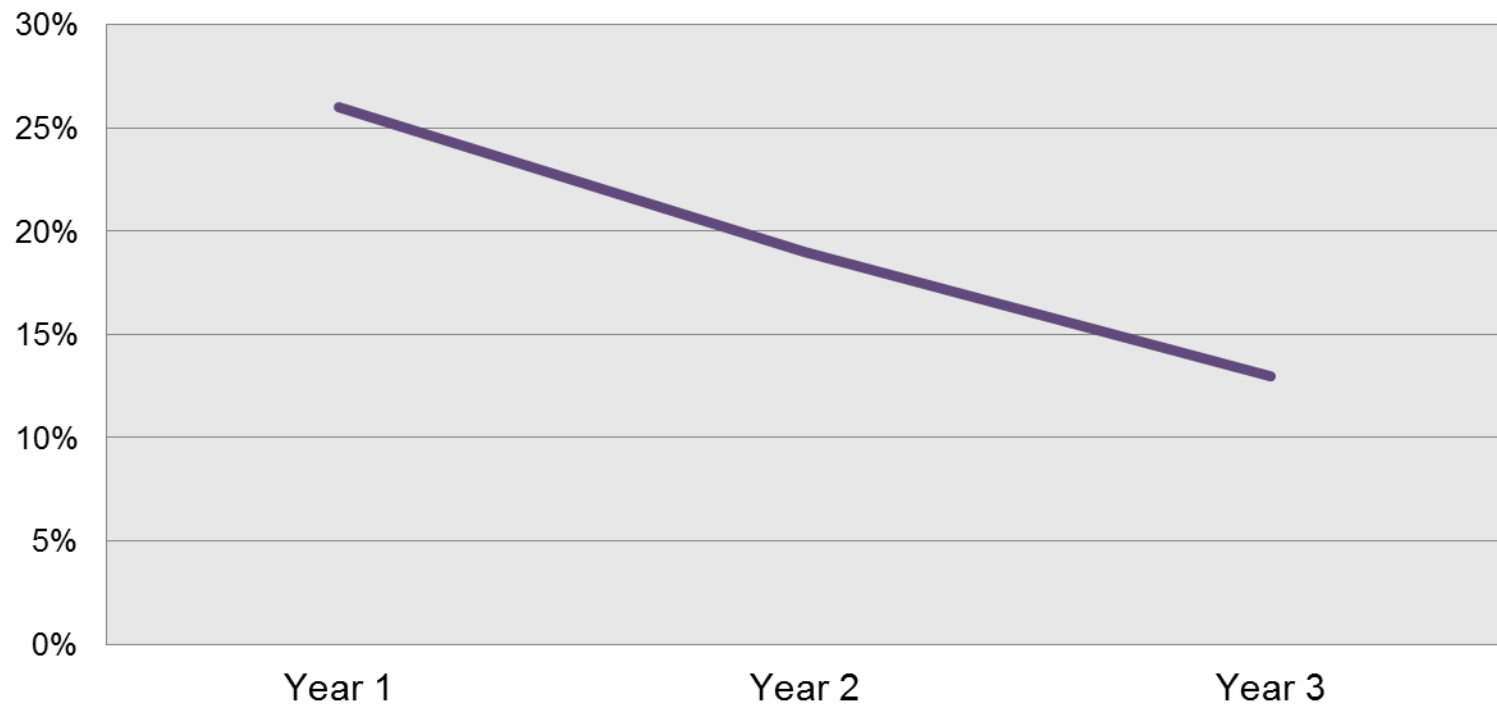


Note: Data includes PSP, N3, and N3 Splits.

# Rate of Engagement



# Rate of Rearrests for those Compliant with Treatment



## AB109 Performance Goals for Year 4

- Implement a specialized intensive residential program for AB 109 inmates who are within 60-90 days of release from jail to increase treatment compliance and reduce recidivism
- Continue to provide on-going specialized training curriculum for AB 109 community and jail-based providers to enhance knowledge and practices related to engagement and treatment of persons with mental health and co-occurring disorders with criminal justice backgrounds
- Continue jail in-reach activities by AB 109 funded providers to actively engage inmates prior to release in continuing MH and COD treatment programs in the community



# Substance Abuse Prevention and Control



# Substance Abuse Prevention and Control AB 109 Year Three Highlights

- Increased existing treatment capacity:
  - 35 locations in Year One to 75 locations in Year Three
- Added residential medical detoxification services to existing treatment continuum
- Expanded Co-Occurring Integrated Care Network (COIN) designated bed capacity:
  - 10 in Year Two to 20 in Year Three

# AB 109 Assessments (October 1, 2011 through September 30, 2014)

<b>AB 109 CASC Activity</b>	<b>Year One</b>	<b>Year Three</b>
<b>Assessments</b>	<b>3,727</b>	<b>6,209</b>
No Treatment Required	1,517	2,051
Treatment Required (Referred to Treatment)	<b>2,210</b>	<b>4,158</b>
Refused Assessment	<b>442</b>	<b>81</b>
Others (Transfers)	312	349

Note: Data Current as of 11/14/2014.

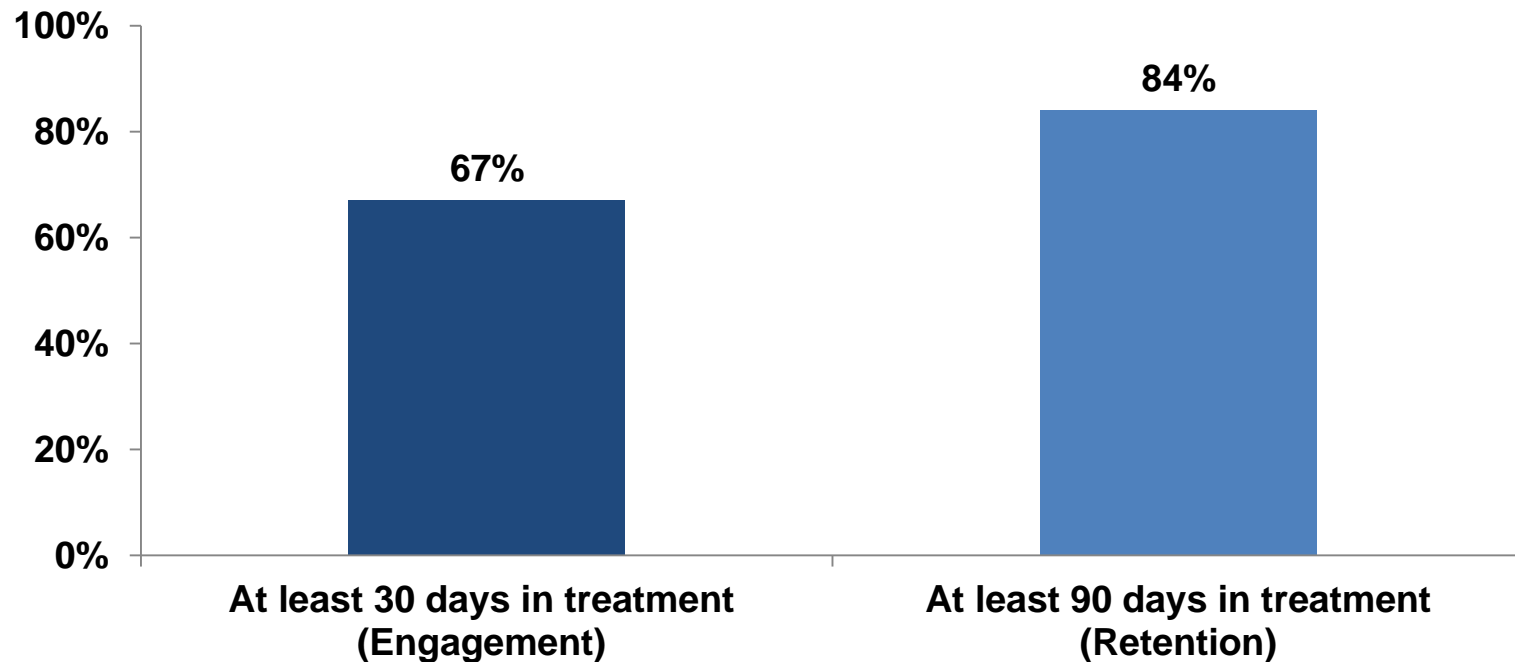
# AB 109 Treatment Activity

## October 1, 2011 through September 30, 2014

Treatment Activity	Total
Admissions	5,898
Discharges	4,796
Positive Compliance	2,229
Negative Compliance	2,183
Other	384

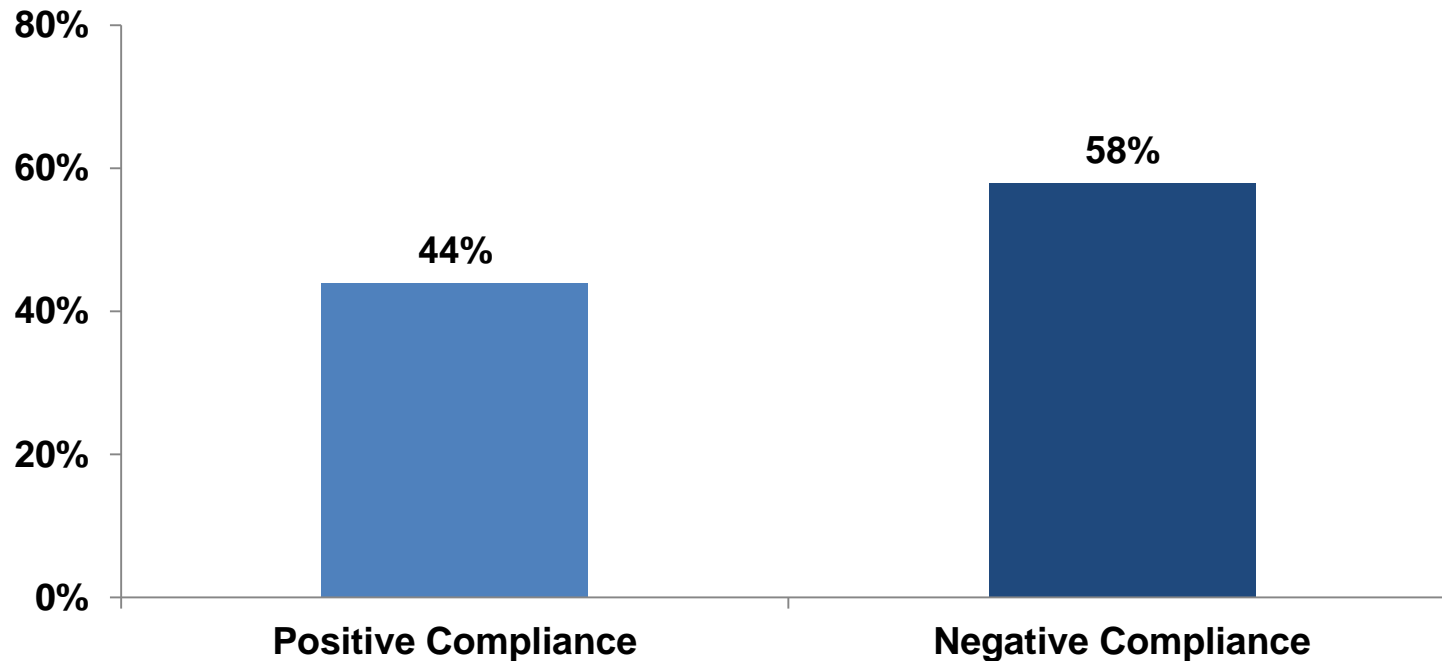
Note: Data Current as of 10/28/2014.

# Positive SUD Treatment Compliance by Engagement and Retention (N=4,796)



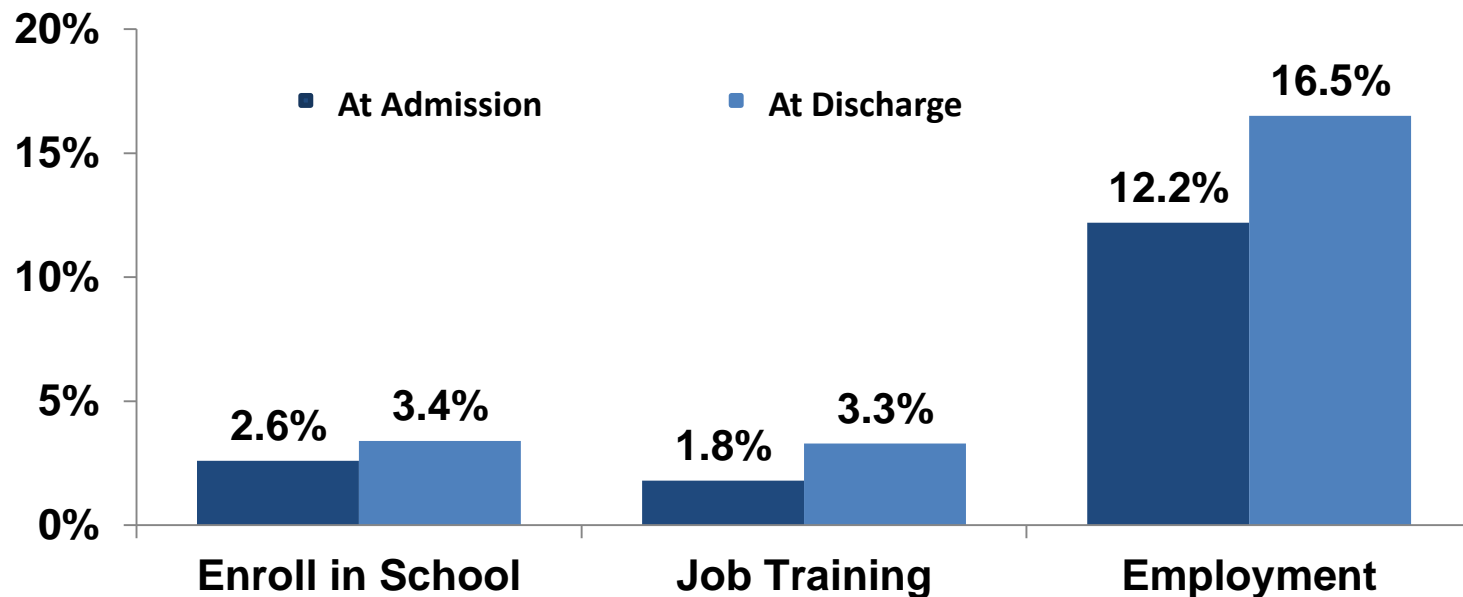
Note: Data Current as of 10/28/2014  
Analysis data from October 1, 2011 to September 30, 2014.

# Outcome: New Arrest Rate by Treatment Compliance (N=5,122)



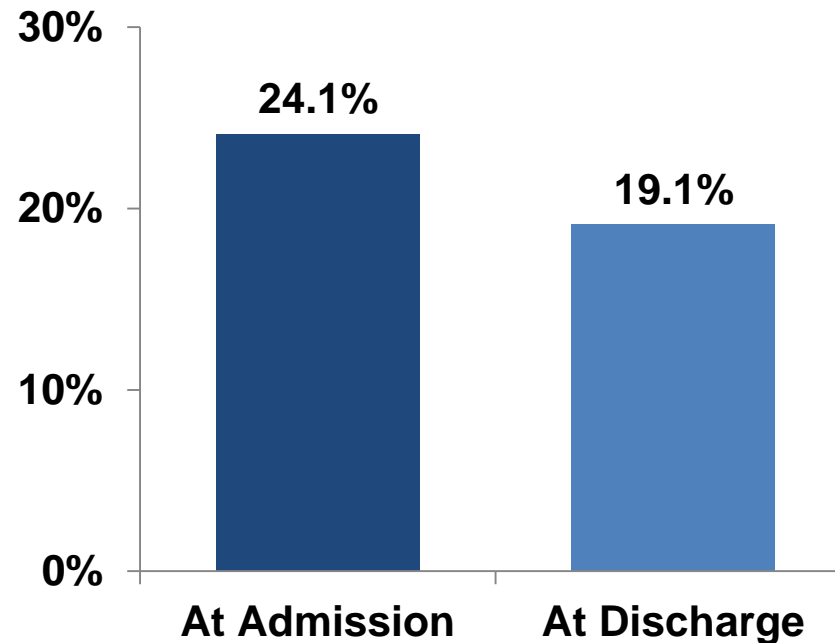
Note: Data Current as of 10/28/2014  
Analysis data from October 1, 2011 to September 30, 2014.

# Outcome: Increase in School Enrollment, Job Training, and Employment (From Treatment Admission to Discharge)



Note: Data Current as of 10/28/2014  
Analysis data from October 1, 2011 to September 30, 2014.

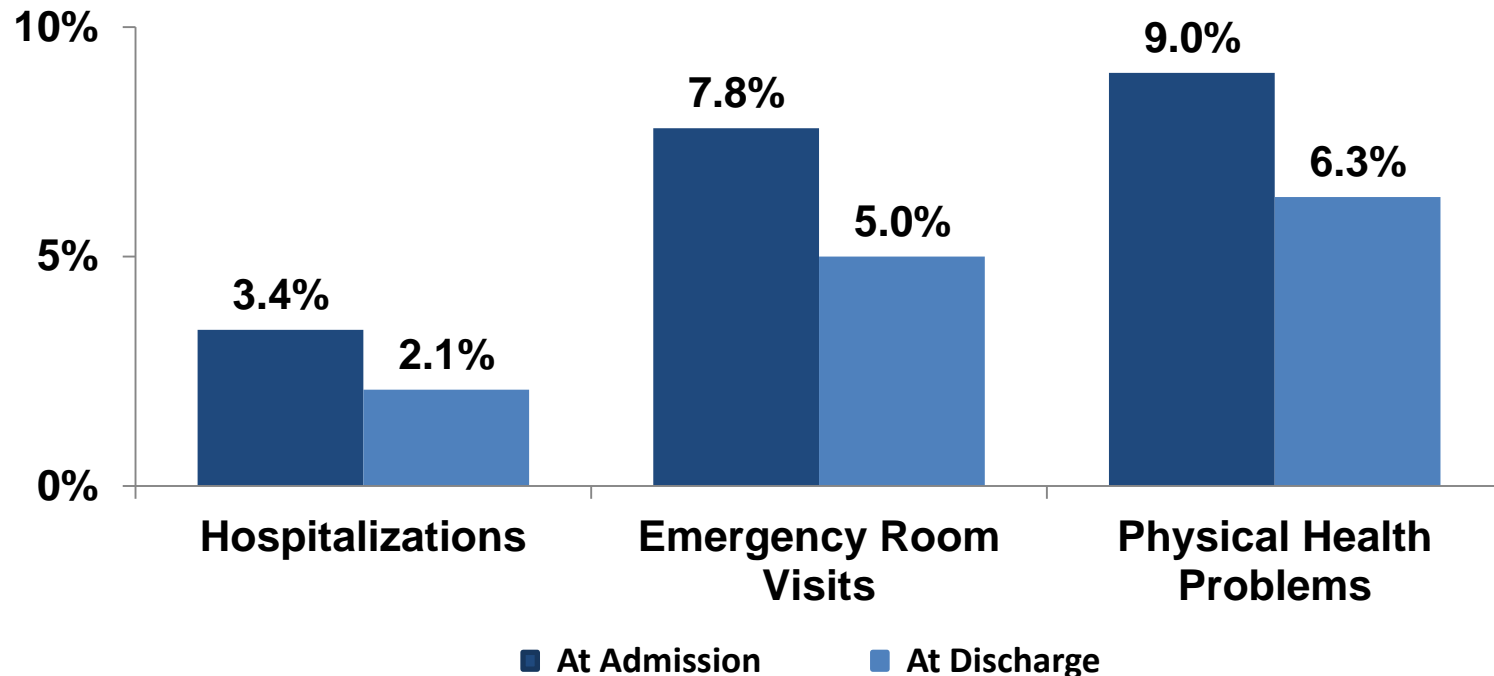
# Outcome: Reductions in Homelessness (From Treatment Admission to Discharge)



Note: Data Current as of 10/28/2014  
Analysis data from October 1, 2011 to September 30, 2014.



# Outcome: Reductions in Medical Problems (From Treatment Admission to Discharge)



Note: Data Current as of 10/28/2014  
Analysis data from October 1, 2011 to September 30, 2014.

# Los Angeles County Sheriff's Department





# LA County - PAL Warrants

## Absconder Info as of 9/30/14

### Active Warrants

Active Warrants (LASD Areas)	289
Active Warrants (Other Agencies)	310
Active Warrants (LAPD)	505
Active Warrants (Transient, Unknown Last Location)	392
Active Warrants (Out of County)	104
<b>Total Workable Warrants</b>	<b>1,600</b>
Active Warrants (Known Deported)	<b>1,078</b>
Active Warrants (Denied Extradition)	<b>261</b>
<b>Total Other Warrants</b>	<b>1,339</b>
<b>Total</b>	<b>2,939</b>

### Repeat Absconders

# Warrants Issued (based on CII)	# PSPs
9 PSP PAL Warrants Issued	1
8 PSP PAL Warrants Issued	4
7 PSP PAL Warrants Issued	11
6 PSP PAL Warrants Issued	52
5 PSP PAL Warrants Issued	126
4 PSP PAL Warrants Issued	348
3 PSP PAL Warrants Issued	822
2 PSP PAL Warrants Issued	1,698

*based on data from CWS*



# Yearly Comparison: Parole Compliance Team Stats as of 9/30/14

Activity	Oct 2011 – Sep 2012	Oct 2012 – Sep 2013	Oct 2013 – Sep 2014	Total Since Inception
PSP Arrests	224	529	199	952
PSP PAL Arrests	40	191	302	533
Other Arrests	907	418	265	1,590
PAL Arrests	53	37	28	118
Firearms Seized	133	152	120	405
Compliance Checks Conducted	1,123	1,246	632	3,001
No Show Locations	363	25	11	399
Address Verifications	1,268	803	817	2,888
FIRS	4,670	4,705	3,069	12,444



# Jail Population Breakdown

## Final Day of Program Year as of 9/30/14

Category	Pre-realignment - Sep 2011	Year 1 - Sep 2012	Year 2 - Sep 2013	Year 3 - Sep 2014	+ / -
Other (open charges, probation violation, PRCS flash, etc.)	10,560	10,014	10,376	10,077	-483
Sentenced N3	0	5,507	6,206	5,916	5,916
Sentenced Parole Violators	0	624	0	249	249
Pending Parole Violators	1,321	306	51	41	-1,280
County Sentenced	2,300	1,708	1,611	1,953	-347
State Prison Population	1,282	908	981	851	-431
<b>Total Physical Count (ADP)</b>	15,463	19,067	19,225	19,087	3,624



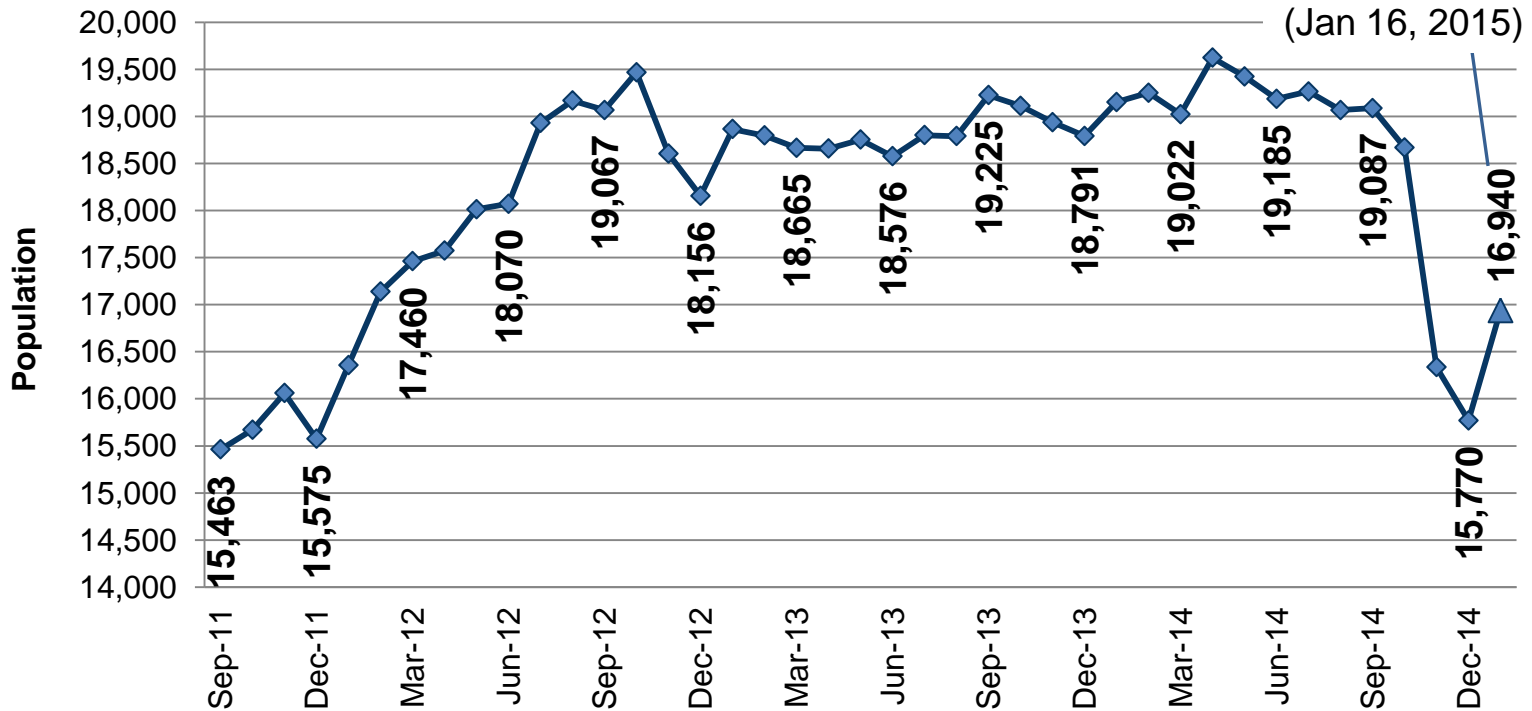
# N3 Population Summary by Final Day of Program Year as of 9/30/14

Category	Year 1 - Sep 2012	Year 2 - Sep 2013	Year 3 - Sep 2014
N3 Population	5,715	6,185	5,563
N3 Sentences (Sept 1-30)	581	705	631
Released	536	554	661
Average Court Given Sentence	2.1 Years	2.6 Years	2.7 Years
I/M Serving Less than One (1) Year	3,868	3,497	3,363
I/M with 24+ Months to Serve	293	487	341
# of Court Sentences Over Ten (10) Years	26	39	56
Leading Conviction Category	Narcotics (ie. 11350HS, 11377HS)	Narcotics (ie. 11350HS, 11377HS)	Burglary (459PC)



# Jail Population Breakdown

## Total Jail Population by Quarter\*



\*Snapshot of Last Day of Month

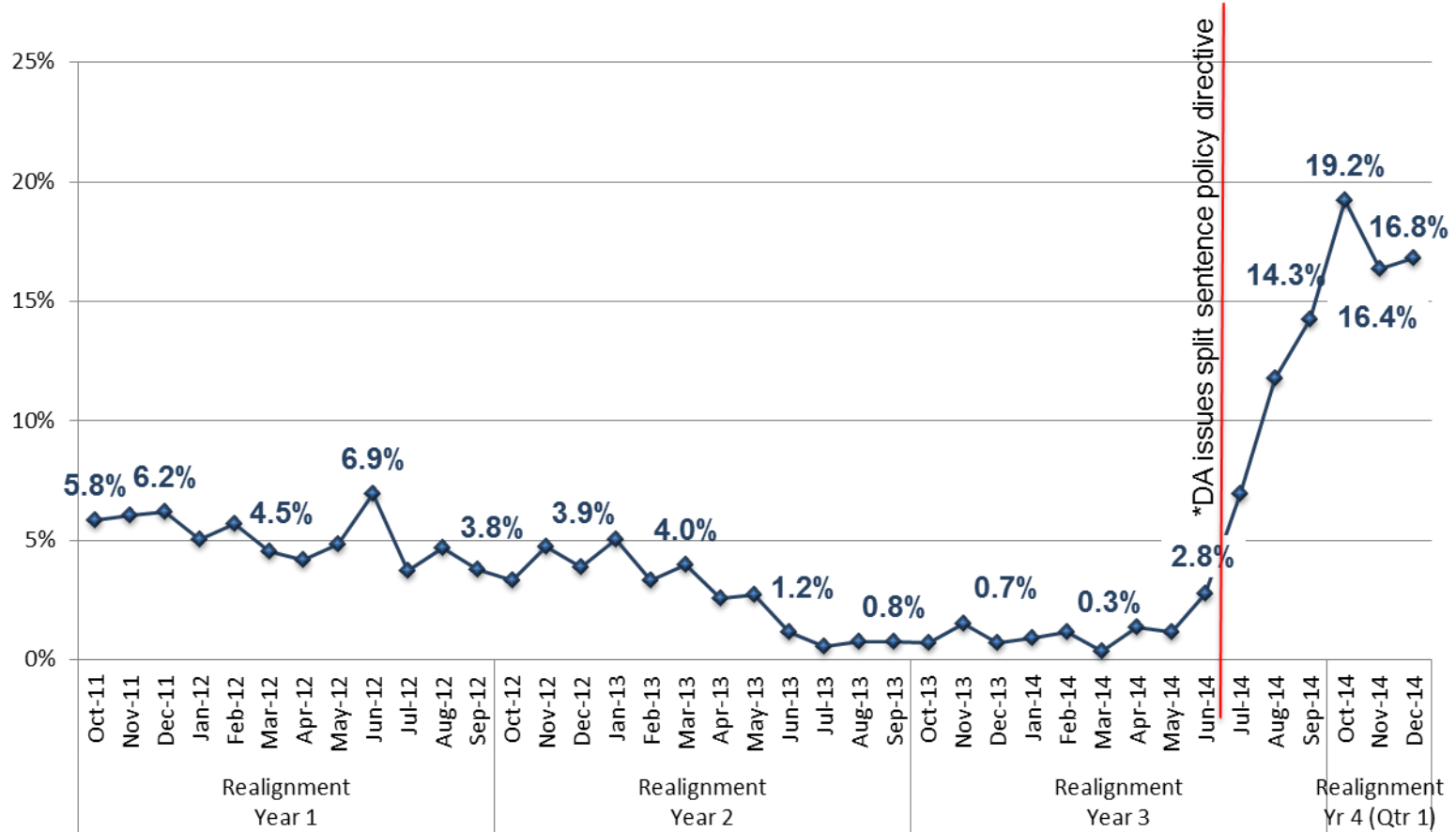
# Countywide Criminal Justice Coordination Committee







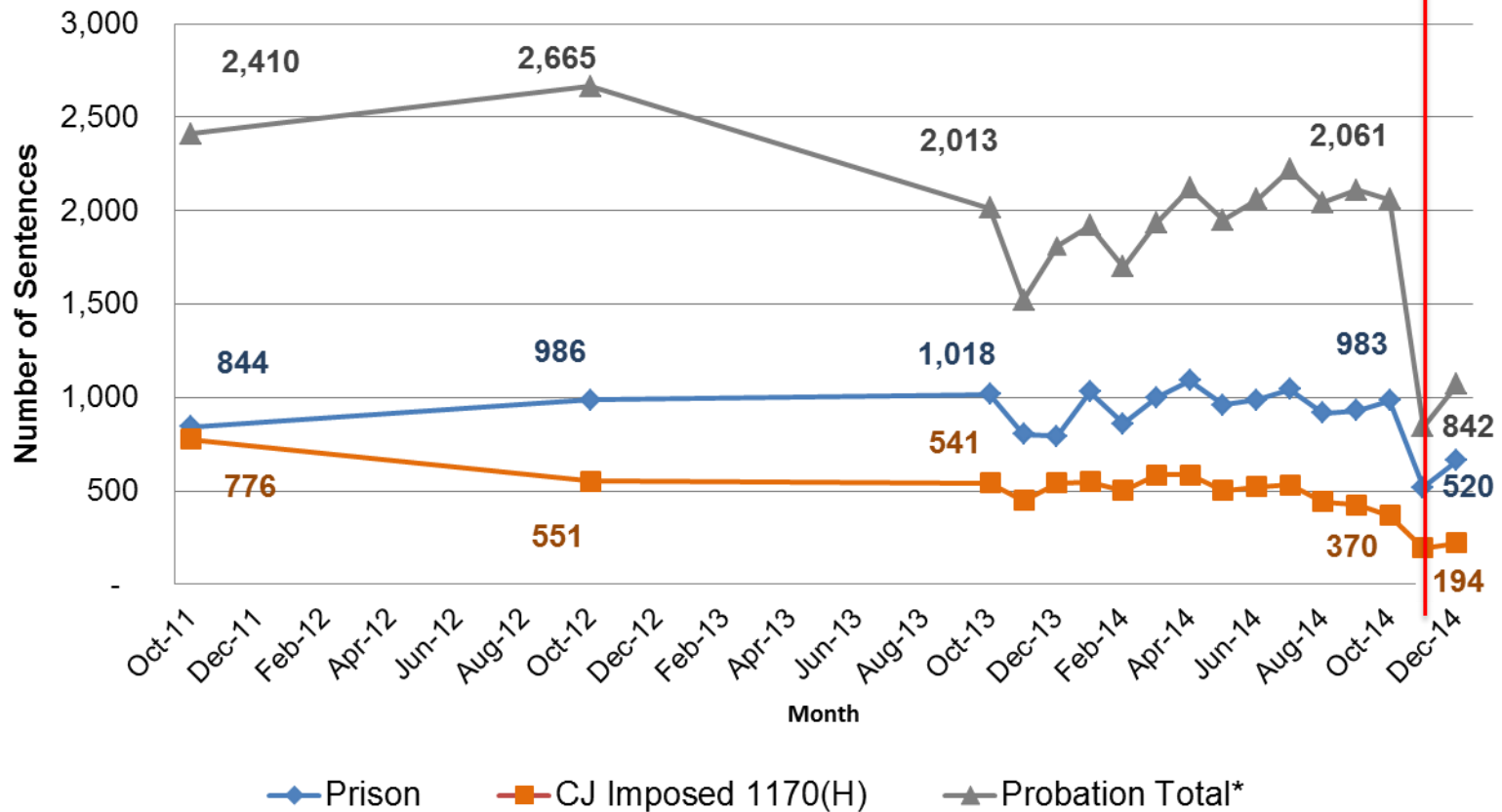
## Split Sentences as a Percentage of 1170 (h) Sentences





# Prop 47 Impact on Realignment

Monthly Snapshots of Felony Sentences\*





# Recidivism Review: PSPs/Straight Sentenced

Category	PSP	Straight Sentenced
Total Arrest Charges (includes infractions, and U.S. Code)	50%	58%
Total Felony or Misdemeanor Arrest Charges	37%	50%
Total Arrest Felony Charges	26%	36%
Total Arrest Misdemeanor Charges	19%	32%



# Questions

